

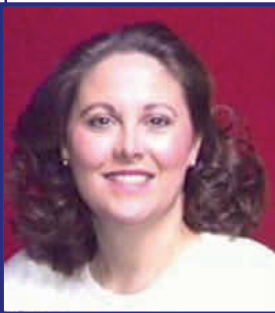
The Welcome the Children Project Presents:



# The Brain-Body Connection

## Sensory Processing and Its Impact on Behavior and Learning

### Our Featured Presenter:



#### **Karan Burnette, M.A., CCC-SLP**

Partners for Inclusive Communities  
2001 Pershing Circle, Suite 300  
North Little Rock, AR 72114  
501-682-9900 (V)  
501-682-9902 (TDD)  
800-342-2923 (V/TDD)  
burnettekaranb@uams.edu  
www.uams.edu/partners

Karan Burnette has a bachelor's degree in elementary education and a master's degree in Speech-Language Pathology. She has 27 years experience working with children with disabilities in educational and residential settings, specializing in Autism Spectrum Disorders (ASD) and behavioral intervention. Ms. Burnette has extensive experience as a consultant and conference speaker. She served as a Clinical Reviewer for the Centers for Disease Control and Prevention (CDC) on the Autism and Developmental Disabilities Monitoring Projects funded to collect national data on the prevalence of ASD. She is currently the Associate Director of Partners for Inclusive Communities, Arkansas' University Center of Excellence on Developmental Disabilities, a department of UAMS.

#### Agenda

**8:30 – 9:00 Sign-in and Welcome**

**9:00 – 10:30 Presentation**

**10:30 – 10:40 Break**

**10:40 – 12:00 Presentation**

**12:00 – 1:10 Lunch on your own**

**1:10 – 2:30 Presentation**

**2:30 – 2:40 Break**

**2:40 – 4:30 Presentation**

(Includes break refreshments and certificate)

Purpose of training: To introduce sensory processing disorders and explain their impact on behavior and learning

#### **Professional development— 6 hours**

- K-12 teachers through AR Department of Education
- Early Childhood Educators verified hours through the TAPP Registry
- Certificate to verify contact hours for other disciplines
- Partners for Inclusive Communities/UAMS is an approved provider of continuing nursing education by Arkansas Nurses Association, an accredited approver by the American Nurses Credentialing Center's Commission on Accreditation. (#09-12-AP)

**Date:** Friday, December 9, 2011  
**Time:** 8:30 a.m. – 4:30 p.m.  
**Location:** Arkansas Transit Association  
620 W. Broadway St.  
North Little Rock, AR  
(501)-372-8900 (site)  
**Cost:** \$100.00 Register by November 25th  
\$135.00 Register Nov. 26–Dec. 5th

**UAMS**

PARTNERS FOR  
INCLUSIVE  
COMMUNITIES

UNIVERSITY OF ARKANSAS  
FOR MEDICAL SCIENCES

UAMS Partners for Inclusive Communities

2001 Pershing Circle, Suite 300 , North Little Rock, AR 72114

Phone: 501-682-9900; TTY: 501-682-9902; Fax: 501-682-9901;

800-342-2923 (V/TDD)

Traveling Arkansas' Professional Pathways



A journey for those who care for and educate children, youth, and families

