

MIND MATTERS



Beebe, her staff, and leadership from PRI discuss the shared vision of improving mental health for Arkansans.

First Lady Tours PRI Construction

Arkansas's first lady, Ginger Beebe, is making a name for herself in our state as a champion for improved mental health, especially for children.

On May 13, the leadership of the University of Arkansas for Medical Sciences Psychiatric Research Institute (PRI) had an opportunity to show off the progress of the new building that is scheduled to open in December. A pink hard hat designated Beebe as the guest of honor for a tour of the construction. The tour included the inpatient unit scheduled to serve children ages 2-12. A question-and-answer session followed with representatives from PRI providing detailed information about the vision for PRI and its positive impact on mental health for the people of Arkansas.

Beebe was designated as PRI's guest of honor with a distinctive pink hard hat.



Leaders Appointed for Division of Health Services Research

Two long-time members of the Division of Health Services Research have agreed to take the helm following the stepping down of **Brenda Booth, Ph.D.**, as director. **John Fortney, Ph.D.**, will assume the role of director, and **Geoffrey Curran, Ph.D.**, will serve as associate director.

Both Fortney and Curran were recruited from out-of-state as young researchers and have built successful research careers at UAMS. Fortney began his career in the department in 1993 as a graduate student and is now a full professor with tenure.

Curran moved to Little Rock to complete a post-doctoral fellowship under Booth. He has been here since 1997 and has become an associate professor with tenure.

Fortney's research interests include depression, co-morbidity, outcomes of care and rural-urban differences in mental health care. In recent

continued on Page 3

Inside this issue:

<i>New Residents</i>	3
<i>MAP Teams</i>	4
<i>Construction Update</i>	5





G. Richard Smith, M.D.

Dear Friends of Psychiatry and the Psychiatric Research Institute,

We are now close to four months away from moving into the new Psychiatric Research Institute (PRI) building. The summer is very busy as we plan for moving 250 or so employees into new clinical and research offices. It is exciting but labor intensive as we plan for all of the details of the move. We

have an incredible group of PRI employees, UAMS employees, consultants and volunteers working on teams to plan for the many aspects of this move (see page 4).

The move into the PRI building is a giant step toward our mission. Recently, both UAMS and PRI leaders reviewed the foundation for the important services we provide. UAMS has launched an internal “Circle of Excellence” campaign focused on customer service and employee satisfaction (see page 6). Additionally, the UAMS vision and mission statements were carefully examined and revised to strongly focus on exemplary education, standard-setting clinical programs, research and service to Arkansas and beyond. PRI leaders also revised our mission statement to include these elements in the context of mental health for individuals and families (see page 6).

An important element of that mission is providing standard-setting clinical care, and the new PRI building will allow us to do just that. The expanded continuum of care that the addition of inpatient units will allow will revolutionize how mental health care is provided in Arkansas. We will have the capacity to treat patients and their families at every level of need from outpatient care to day treatment to inpatient service. We will be able to treat individuals from ages 2 and older. Additionally, we will now have an impressive, state-of-the-art facility where clinicians, educators and researchers can collaborate and provide services at a level that has never been seen in our state.

I want to invite you to visit our new facility around the time of our opening and help celebrate. We will have special events for employees, supporters, health care providers, and the general public. Events will be well publicized, so keep your eyes and ears open as we get close to the opening date of Dec. 8. I hope to see you there.

Best wishes,

G. Richard Smith, M.D.

UAMS PRI and UALR Collaborate for Training Center

The Psychotherapy Training Center (PTC) is a new program co-sponsored by the University of Arkansas for Medical Sciences Psychiatric Research Institute (PRI) and the University of Arkansas at Little Rock (UALR) School of Social Work. The goal of this joint effort is to provide quality training, drawing on evidence-based, contemporary models to improve the effectiveness of mental health practice. This collaboration between UAMS and UALR to improve the skills of therapists in the state ultimately means improvements in mental health for Arkansans.

Kim Jones, Ph.D., LCSW, UALR School of Social Work associate professor and UAMS Department of Psychiatry clinical assistant professor, is director of the PTC. “I am very excited to have had the opportunity to be a part of such an important and timely collaboration between UAMS/PRI and the UALR School of Social Work. We are most fortunate to have recruited some of the best clinicians in their field to teach in the training center, and I am confident that those who enroll in the training courses will find their experience both rewarding and applicable to practice,” said Jones. Other PTC faculty include: **Howard Turney, Ph.D., LCSW**; **Rebecca Ward, MSW, LCSW**; **LaVerne Bell-Tolliver, Ph.D., LCSW**; and **John Milwee, Psy.D.**

Training courses will be offered in both ten- and fifteen-week formats with an emphasis on the application of theory to practice. Courses are currently planned for psychodynamic psychotherapy with an object relations focus, cognitive-behavioral psychotherapy, and family therapy. Integrative seminars are also planned to help participants further integrate theory with practice.



To get more information and/or sign up for a course, please call (501) 569-3053 or visit the web site at www.ualr.edu/extendedprogram/. Follow the link to continuing education and then psychotherapy training.

Leaders Appointed

continued from Page 1

years his research has focused on telemedicine and ways to implement and improve evidenced-based rural mental health care through telemedicine-based collaborative care.

Curran has concentrated his research efforts on depression and substance abuse treatment. Curran has a National Institutes of Health Career Development Award that provides for a technology transfer project in four community-based, residential substance use disorder treatment programs to develop and implement a treatment algorithm for assessing and treating co-morbid depression. Most recently, Curran has been awarded a Veterans Administration grant to develop Web-based training for cognitive behavioral training for depression for providers specializing in substance abuse treatment.

In a recent presentation to faculty and staff, Fortney outlined a plan for the future of the division. He believes that the division can build a national reputation in one of several areas of expertise by coordinating research efforts on projects with high impact on the public's mental health and the state's unique rural features. Such projects may include interventions to improve care in rural mental health and substance abuse treatment settings, development and integration of technology to improve access and quality of mental health care services, and non-disease specific interventions addressing an individual's multiple mental healthcare needs. Fortney is also dedicated to ongoing efforts at recruiting innovative faculty and staff.

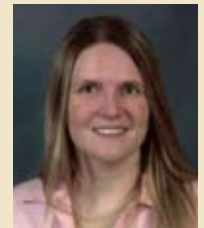


John Fortney, Ph.D., (left) is the new director of the PRI Division of Health Services Research, and Geoffrey Curran, Ph.D., is the new associate director.

Fortney and Curran are both accomplished investigators who are committed to continuing development of the Division of Health Services

Research and PRI's mission to improve mental health through innovative research.

Psychiatry Welcomes Eight New Residents



(Top left to right) Ivanjo Aldea-Venegas, M.D., Ponce School of Medicine, Puerto Rico; John Burnett, M.D., UAMS; Crystal Deweese, M.D., UAMS; Tracy Evans, M.D., UAMS; (Bottom left to right) Robin Forward-Wise, M.D., UAMS; Rachel Fiori, M.D., UAMS; Brent Lawlis, M.D., Texas Tech University School of Medicine; Jacquelyn Martin, M.D., UAMS.

In March, the University of Arkansas for Medical Sciences (UAMS) Department of Psychiatry filled all eight available residency spots. Ben Guise, M.D., residency training director, said, "All eight were among our top choices. We are very excited about this incoming group." Six are UAMS graduates and one each is from Texas Tech and Ponce School of Medicine in Puerto Rico.

"Such results show not only the strength of our psychiatry residency program but also the dedication of our faculty and residents towards recruitment of people of the highest caliber," said Rick Smith, M.D., chair of the Department of Psychiatry and director of the Psychiatric Research Institute.

MAP Teams Work To Move PRI Into New Building

“Make Anything Possible” has become the mantra of a dedicated group of people who have volunteered to work on one or more Make Anything Possible or MAP teams. After months of planning, the MAP teams first met in the spring with the ultimate goal of planning and carrying out the transition to the new PRI building.

Laura Tyler, Ph.D., Psychiatric Research Institute (PRI) administrator, believes that in the upcoming months the employees of PRI, other UAMS employees, and a group of supporters, volunteers, and consultants will be focused on positive solutions for the organization.

The building is scheduled to open December 8, 2008, for outpatient services and January 20, 2009, for the inpatient units. Planning for this involves details both large and small. What day will the phones be turned on? Where will patients and their families check in? How many copy machines are needed on each floor? Will a ribbon cutting ceremony interfere with the movers on moving day? These and many other questions are being asked and answered in MAP teams.

With a total of 21 teams and over 150 people working on one or more teams, Tyler hopes most issues will be covered. The task of moving more than 250 employees from all over town into a new building is challenging. Add to that transitioning the Walker Family Clinic with over 82,000 patient visits a year and research projects that can bring in hundreds of subject visits a year, and the task becomes almost overwhelming. “The transition

from the theoretical to the tangible will require a tremendous amount of planning, energy and execution,” Tyler said. “PRI is a worthy destination, and one that makes anything possible as we look to improving mental health care.

I have no doubt that we will address as many issues as we are capable of in our MAP teams. There are incredibly dedicated people working to make the transition to PRI as seamless as possible,” Tyler said.

Some of the MAP teams include:

Child-Specific Issues

Led by **Lynn Taylor, M.D.**, and **Mollie Gathright, M.D.**, this team will ensure that programmatic and environmental issues that will require child-specific attention are identified and resolved.

Customer Service

Led by **Terry Kramer, Ph.D.**, and **Amy Dowell**, this team will address excellence in customer service throughout PRI.

Facilities

Led by **Christina Clark**, this team’s focus is to monitor the final construction stages of the building and plan for the actual moving of desks, chairs, computers, etc.

Green Team

Cathy Stanger, Ph.D., is leading this team to ensure that PRI is ecologically minded and to anticipate ways to make its operations environmentally friendly.

Volunteers

Ellon Cockrill and **Terry Kramer, Ph.D.**, and their team will be developing and promoting volunteer opportunities in PRI.



PRI Grand Opening Celebration

Ribbon Cutting Ceremony
Tuesday, December 2, 2008
10:00 a.m.*

Other celebrations for donors, supporters, and employees will be announced soon for the first week in December.

**Date and time are tentative. Watch your mail. More information will be distributed in the fall.*

PRI Construction Update



*Clockwise from top left:
West side of the building on June 17, 2008.
Inpatient room on the fifth floor.
Bookshelves are installed in the library.
The west staircase.*

UAMS Employees Enter “Circle of Excellence”

More than 5,100 employees, or roughly half of the entire workforce, participated in training sessions in May to learn about creating a service-based culture at UAMS. Led by world-renowned customer service experts at the Disney Institute, the classes introduced employees to a new focus on values, standards and performance expectations at UAMS. The Psychiatric Research Institute (PRI) had close to 100 percent participation in the training.

“Customers can’t always comprehend the quality of the product or procedure, but they readily perceive the quality of their experience,” said Chris Caracci of the Disney Institute, emphasizing that the same is true for UAMS and its patients.

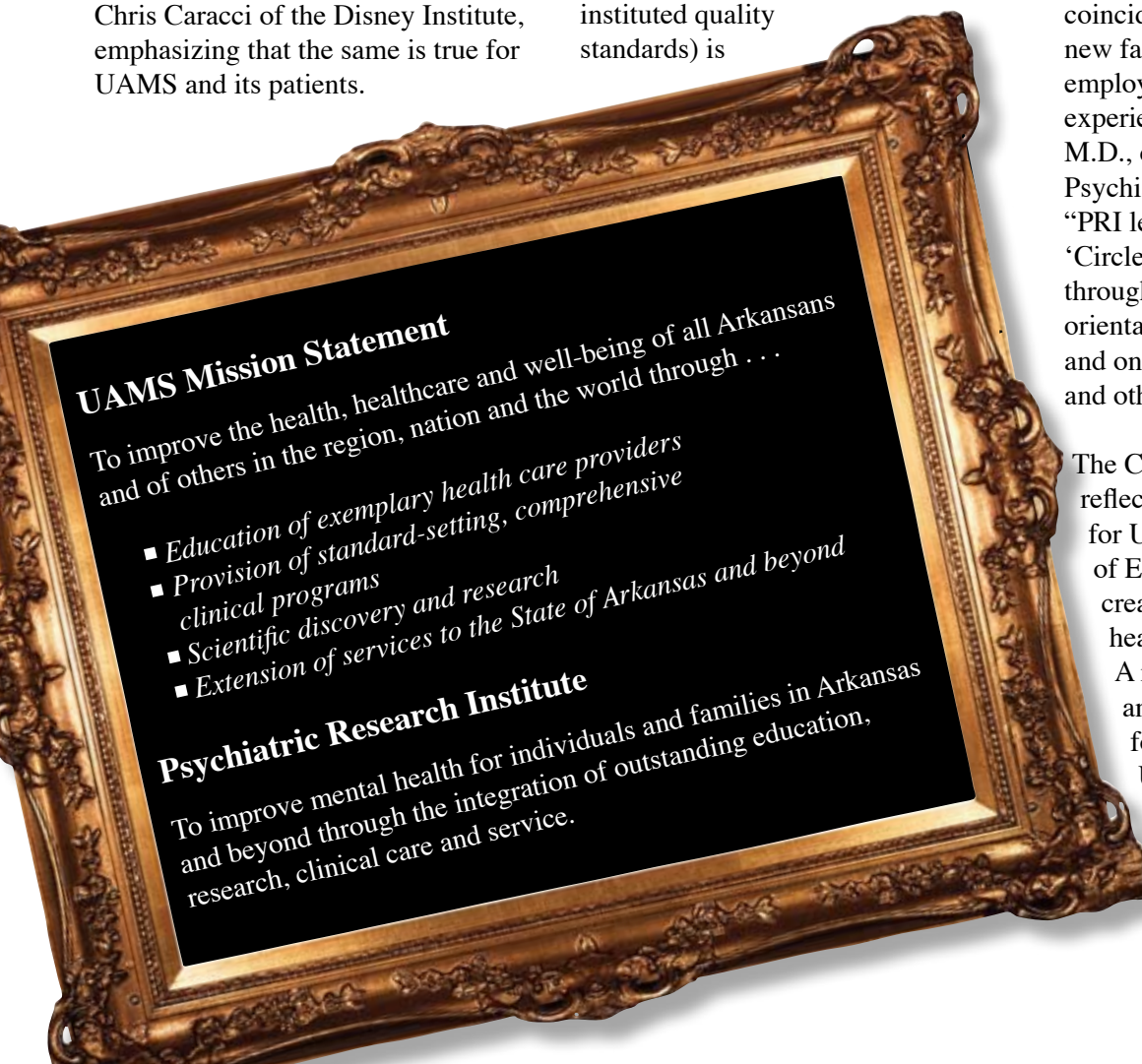


“This training was intentionally different from anything we’ve ever done at UAMS because the Circle of Excellence (UAMS’ newly instituted quality standards) is

unlike anything we’ve ever done before,” said **Richard Pierson**, UAMS vice chancellor for clinical programs. “We have an exciting opportunity to improve the way we do business as we prepare to move into the new hospital. We need to remember how important it is that we treat each other, our patients and their families with respect and that we uphold the behaviors and standards we’ve adopted as part of the Circle of Excellence initiative.

“PRI leaders invested their time to help develop and participate in the ‘Circle of Excellence’ training. I am pleased these trainings have coincided with the opening of our new facility and that so many of our employees took advantage of the experience,” said G. Richard Smith, M.D., chair of the Department of Psychiatry and director of PRI. “PRI leaders will continue the ‘Circle of Excellence’ emphasis through employee and volunteer orientations, performance reviews and ongoing service to guests and others.”

The Circle of Excellence initiative reflects revised guiding principles for UAMS and PRI. The Circle of Excellence’s emphasis is on creating comfort, hope, and healing for patients and families. A recent review of the values and ideas that are the foundation for the services provided by UAMS and PRI resulted in changes in the mission statements for both entities.



Department of Psychiatry Faculty Honored



Linda Worley, M.D., accepts the award for Outstanding Woman Faculty Award at the eighth annual UAMS Women's Faculty Development Caucus awards.

Brenda M. Booth, Ph.D., professor of psychiatry and biostatistics, was a recipient of the Outstanding Alumni Award from the University of Iowa College of Public Health. She is a nationally recognized expert in substance abuse epidemiology and addiction health services research. She has authored more than 120 peer-reviewed publications and served as principal investigator on numerous grants.

Alison Oliveto, Ph.D., professor of psychiatry, vice chair of research and senior scientist in the Center for Addiction Research, received from the Department of Psychology at the University of North Carolina at Chapel Hill the Distinguished Alumni Award for outstanding achievements in the field of psychology.

J. Greer Sullivan, M.D., MSPH, professor of psychiatry and director of the VA South Central Mental Illness Research, Education and Clinical Center, received the Health Services Research Senior Scholar Award from the American Psychiatric Institute for

Research & Education in recognition of significant career contributions to the advancement of mental health services research.

Linda L. Worley, M.D., professor of psychiatry and medical director of Faculty & Student Wellness, received the Outstanding Woman Faculty Award at the eighth annual UAMS Women's Faculty Development Caucus awards dinner on April 3. "Dr. Worley is a true leader who has empowered faculty, residents, and stu-

dents to succeed in their personal and professional lives," said Sara G. Tariq, M.D., assistant professor in the UAMS Department of Internal Medicine and director of Clinical Skills.

Puru Thapa, M.D., associate professor of psychiatry, has won the Golden Apple teaching award for the fifth time. Junior medical students honor influential teachers with this honor. Thapa has set a record at UAMS by winning this award five out of the last six years.

Three PRI Employees Receive Major Contributor Awards

In May, three Psychiatric Research Institute (PRI) employees were honored by PRI leadership and their colleagues with the Major Contributor Award based on excellent job performance with particular emphasis on service to guests and co-workers. These individuals have shown respect toward others, honesty in actions, commitment to follow-through on tasks, and an interest in personal and professional growth. The following employees were honored:

Berva Bentley, billing specialist for PRI, Child Study Center and STRIVE; **Lisa Smithee**, L.M.S.W., utilization manager at Child Study Center; and **Eliza Wessinger**, clinical research coordinator in the Center for Addiction Research.

The Major Contributor Awards and other employee recognition mechanisms were initiated throughout PRI in January 2008.



(Left to right) Laura Tyler, Ph.D., Elaine King, Berva Bentley, and Terry Kramer, Ph.D.



(Left to right) Elaine King, Terry Kramer, Ph.D., Lisa Smithee, Ken Hall, and Jan Waldrip.



(Left to right) Kathryn Newsum, Eliza Wessinger, Terry Kramer, Ph.D., and Jan Waldrip.

4301 W. Markham St., #554
Little Rock, AR 72205-7199

UAMS



NONPROFIT
ORGANIZATION
U.S. POSTAGE
PAID
PERMIT NO. 1973
LITTLE ROCK, AR

Contact Us

UAMS Psychiatric Research Institute
4301 W. Markham St., #554
Little Rock, AR 72205-7199
Administration (501) 686-5483
Fax (501) 686-8154
Web site: www.uams.edu/psych

Programs for Adults
(501) 686-5900

Child Study Center
(501) 364-5150

Programs for Young Adults
(501) 686-5300

**Arkansas State Hospital /
Division of Behavioral
Health Services**
(501) 686-9000

**UAMS Faculty and Student
Wellness Program**
(501) 686-8408

**Central Arkansas Veterans
Healthcare System**
(501) 257-1000

Employee Assistance Program
(501) 686-2588

STRIVE
(501) 771-8261

**Division of Health Services
Research**
(501) 660-7500

Development Office
(501) 526-7795

Center for Addiction Research
(501) 526-7802

2008 UAMS Psychiatry Advisory Board

Elgin Clemons
June Freeman
Don Hatfield
Kristi Imbro
Victor Jacuzzi
Ruthe Kaplan
Tad Krug
Bill Mann
George McLeod
Sheila Mehaffy
Don Munro
Helen Porter
Frances Shackelford
Jim Shenep
Judy Snowden
Nell Spears
Caroline Stevenson
Tom Vandegrift
Anna Kay Frueauff Williams
Brigette Williams

Beautiful Minds

September 17, 2008

Pleasant Valley Country Club
Speaker: Rev. Susan Sims Smith

November 12, 2008

UAMS Stephens Spine Institute
Speaker: G. Richard Smith, M.D.

*For information, please contact
Ellon Cockrill (501) 526-7654 or
ecockrill@uams.edu.*

Information on Giving

*For information about being a
Psychiatric Research Institute or
Department of Psychiatry donor,
please contact Renie Rule at
(501) 526-7795 or (501) 346-3446
rprule@uams.edu.*