

---

# Security Management

## Objectives

The objective of the UAMS Police Department (UAMSPD) is to provide a safe & secure environment for employees, students, patients and visitors, as well as the protection of UAMS property. To accomplish this objective during FY 2009-2010 the Security Management Program under the leadership of the UAMSPD focused on:

- Continuing efforts to decrease the potential for violent acts, particularly assaults & work place violence, on the UAMS campus.
- Improving the UAMS PD's ability to control and monitor access to sensitive areas.
- Improving the UAMS PD's ability to control and monitor thefts on UAMS campus.
- Enforcement of UAMS smoke-free policy and newly initiated state law which prohibits smoking at health care facilities.

## Scope

The UAMS Police Department monitors all criminal offenses, with the assault category being a high priority. Efforts to decrease the potential for violent acts, particularly assaults on the UAMS campus, included training for over 1,953 employees by the Crime Prevention and Training Division during FY 09-10. Violence in the Workplace Training continues, and the UAMS Police Department continues C.P.I. (Crisis Prevention Institute) training for campus and hospital personnel. The UAMS Police Department has available, three 30 minute presentations, titled Shots Fired, Flash Point and Silent Storm. The Shots Fired presentation gives students and employees alternatives in the actions they take, prior to police arrival, during an active shooter situation. The mind set covered in this program will increase the probability of our students and employees surviving an active shooter incident. The Flash Point presentation gives insight into recognizing and preventing violence in the workplace. The Silent Storm provides information about domestic violence in the workplace. Links to these videos are available on the UAMS Police web page for access to the students and employees of UAMS.

Efforts to control and monitor access to sensitive areas were augmented by numerous expansions and additions to the campus wide security system. The Winthrop P. Rockefeller Cancer Institute is due to be completed by late July 2010.

Augmenting the campus wide security system's ability to control and monitor access, CCTV has been implemented in certain sensitive areas on campus. These areas are monitored and recorded in the UAMS Police Department's Communication Center. Currently, there are over 700 + different areas monitored by the UAMS Police Department and recorded by the Electronic Surveillance Department.

High visibility, constant patrol and total awareness of the surroundings are vital to the department's ability to keep the campus community safe. A police services survey form has been added to the department's website. This allows for anonymous comments, suggestions, and evaluation of the department's services and performance. In 2009 a new security division was launched with five Officer positions and by July 2010 has grown to a force of 8 positions, five positions in the New Hospital area and three in the Cancer Institute area.

## **Performance**

**As indicated on the attached Safety Committee Dashboard reports of assaults (terroristic threatening, assaults and batteries combined) for FY 09-10 averaged 3.75 per quarter compared to 5.00 for FY 08-09, a 25% Decrease.**

**The number of Theft of Property calls for FY 09-10 averaged 60.75 occurrences per quarter compared to the FY for 08-09 per quarter of 56.00, a 2.53% Increase.**

**The number of Work Place Violence to include disturbances for FY 09-10 averaged 6.25 occurrences. This category was not counted separate FY 08-09 so a comparison will not be possible until next year.**

## **Effectiveness**

The number of occurrences in the assault category went down in FY 09-10 and theft of property had a slight increase. The population and area of the campus has increased and at the same time the number of Police officers FTE's has declined by three. This loss has been augmented with the formation of a security division consisting of eight security officers. The shift schedule of the Police Department has been changed from 8 hour shifts to 12 hour shifts. The UAMS Police Department through the Crime Prevention and Training Division continues to instruct Non-Violent Crisis Intervention courses on campus. Violence in the workplace training will continue to be presented to security sensitive areas. Through our efforts we have been able to maintain a low number of these incidents occurring on our campus.

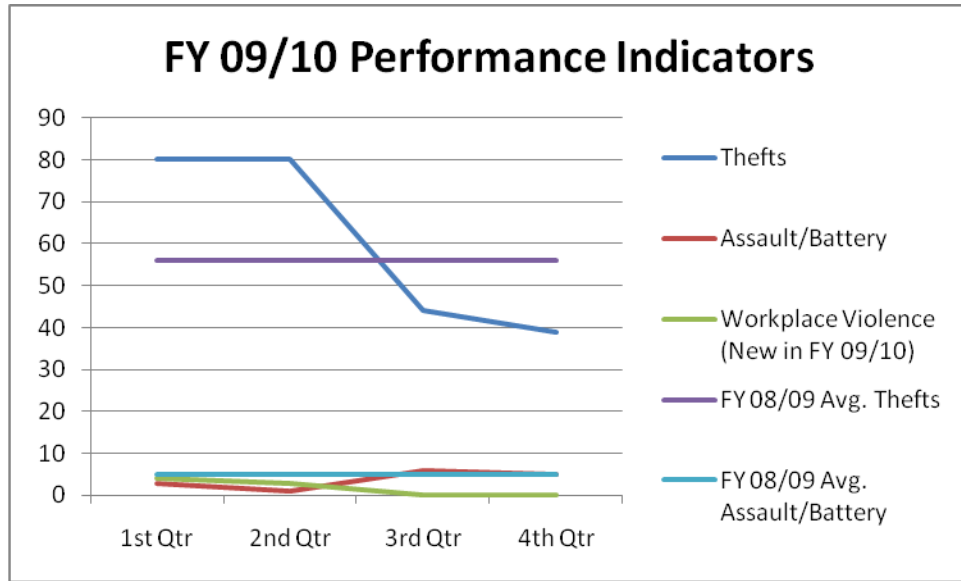
Continued expansion of the Campus Wide Security System by the Security & Surveillance department in cooperation with the UAMS Police Department has continued to enhance the department's ability to allow for a controlled method of access and more efficient monitoring of sensitive areas, and overall area security. This system allows access to areas by employee ID badge, resulting in the ability to control, monitor and track access by employees, as well as any breeches in security.

## **Proposed Performance Indicators for 2009-2010**

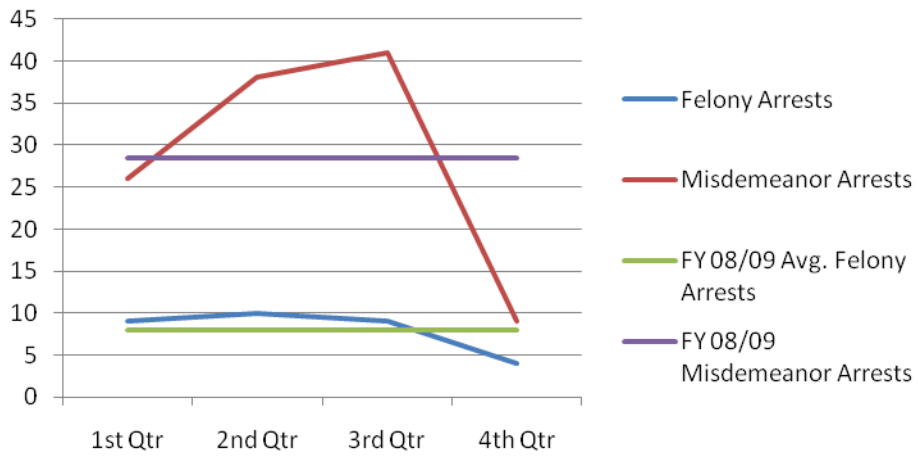
- The number of calls for assaults should remain at < or = the number from the previous year. If the number increases more than 50% than the number of assaults from previous fiscal year's highest quarter or 9, appropriate corrective measures are taken, which may include increasing patrols and the provision of focused training and detection in the areas of concern. The highest number of assault calls per quarter for the previous FY was 6.
- The number of calls for Theft of Property should remain at < or = of previous fiscal year's highest quarter. If the number increases more that 15% of this figure or 92, appropriate corrective measures are taken, which may include increasing patrols and the provision of focused training and detection in the areas of concern. The highest number of theft of property calls per quarter for the previous FY was 80.
- The number of calls for Workplace Violence should remain at < or = of previous fiscal year's highest quarter. If the number increases more that 30% of this figure, appropriate corrective measures are taken, which may include increasing patrols and the provision of focused training and detection in the areas of concern. The highest number of workplace violence calls per quarter for the previous FY was 0.

## UAMS Police Department Summary Report (2009 – 2010)

	1 <sup>st</sup> QTR	2 <sup>nd</sup> QTR	3 <sup>rd</sup> QTR	4 <sup>th</sup> QTR	FY 09 – 10 QTR Avg.	FY 08 – 09 QTR Avg.	Deviation	
							Amount	Percentage
<b>Thefts</b>	80	80	44	39	60.75	56.00	4.75	2.53%
<b>Assault / Battery</b>	3	1	6	5	3.75	5.0	-1.25	-25%
<b>Work Place Violence</b>	4	3	0	0	1.75	0	0	0



### FY 09/10 Arrests



### FY 09/10 Traffic

