

Faculty

Neriman Gokden, MD

Associate Professor of Pathology
Director of Surgical Pathology



**Anatomic and Clinical Pathology
Residency**

Barnes-Jewish Hospital
Washington University School of
Medicine

Surgical Pathology Fellowship

Barnes-Jewish Hospital
Washington University School of
Medicine

Board Certification

Anatomic and Clinical Pathology

Specimen Protocol

Submit renal core biopsies in:

10% Formalin or 4% Paraformaldehyde for
Light Microscopy

Michel's Fixative for
Immunofluorescence Microscopy

4% Glutaraldehyde for Electron
Microscopy

All can be shipped at ambient temperature
Monday-Friday 8AM-5PM

Contact us!

University of Arkansas for
Medical Sciences
Department of Pathology
4th floor Shorey Building
4301 West Markham Street, Slot 517
Little Rock, AR 72205

Toll Free: 1-888-233-0327
(501) 603-1963, (501) 686-5170

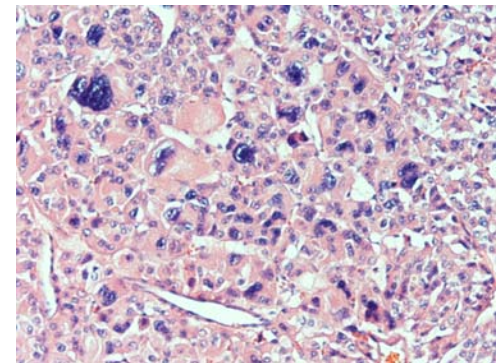
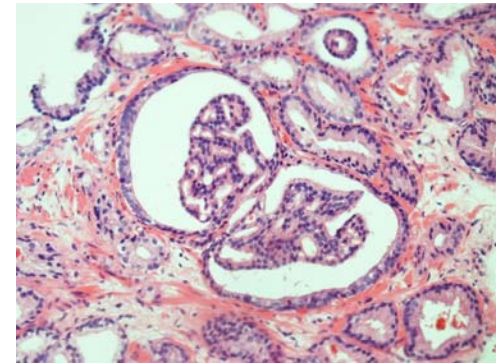
Fax : (501) 296-1184

www.uams.edu/pathology



Renal and GenitoUrinary Pathology

Referral and
Consultation Services



Division of Surgical Pathology

Department of Pathology
University of Arkansas for
Medical Sciences

Why UAMS Renal Pathology Services?

Expertise in Adult and Pediatric Patients

Native and Renal Transplant Biopsies

Rapid Turn Around Times

24-72 Hours on Normal Service
5 Hours on Rush Service
Emergency Service Available on Weekends and Holidays

Evaluations Include

Light Microscopy (3 microns)
H&E, PAS Jones' Silver Methanamine,
Masson's Trichrome Stain

Immunofluorescence Slides
IgG, IgA, IgM, C₃, C₁₉, kappa, lambda,
Fibromagen, Albumin, C₄d

Electron Microscopy

Why UAMS for GenitoUrinary Pathology Services?

Expert opinions are available to you in all of the following...

Neoplastic and Non-Neoplastic Diseases of Adult and Pediatric Kidney Patients

Adult and Pediatric Bladder, Ureter and Urethral Conditions

Neoplastic and Non-Neoplastic Conditions of the Prostate

Testicular and Penile Neoplasia

Transplant Nephrectomy Specimens

