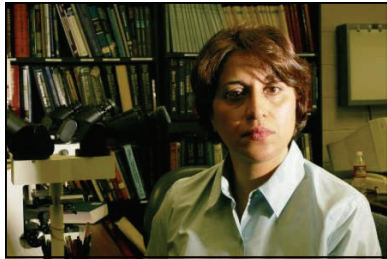


Faculty

Soheila Korourian, MD

Associate Professor of Pathology
Director of Breast Pathology



Anatomic Pathology Residency
University of Colorado at Denver

Surgical Pathology Fellowship
Stanford University

Board Certification

Anatomic and Clinical Pathology
Cytopathology

Dr. Korourian has reviewed and interpreted breast lesions for more than a decade. She is a vital member of the breast team at UAMS, as well as active in research projects with the Susan G. Komen Foundation. Dr. Korourian is readily available to discuss difficult and interesting cases.

Specimen Protocol

Glass slides and paraffin blocks can be sent at any time.

Fresh tissue (core needle biopsy) can be placed in 10% buffered formalin and submitted to UAMS within 24 hours (Monday-Thursday).

It is advisable to document the time the specimen was placed in formalin.

Information, Shipping and Supplies

University of Arkansas for
Medical Sciences
Department of Pathology
4th floor Shorey building
4301 West Markham Street, Slot 517
Little Rock, AR 72205

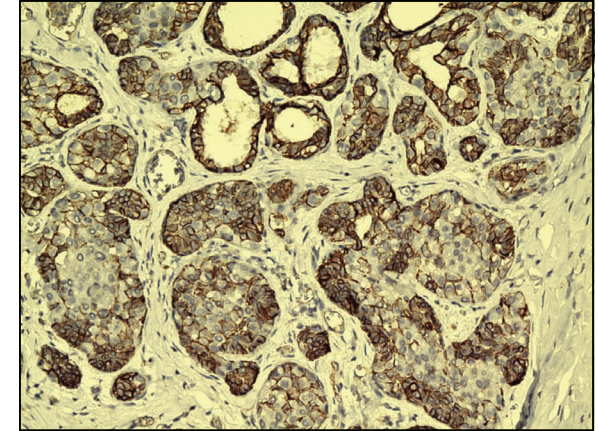
Toll Free: 1-888-233-0327
(501) 603-1963, (501) 686-5170
Fax : (501) 296-1184
www.uams.edu/pathology

UAMS

UNIVERSITY OF ARKANSAS
FOR MEDICAL SCIENCES

Breast Pathology

Referral and Consultation Services

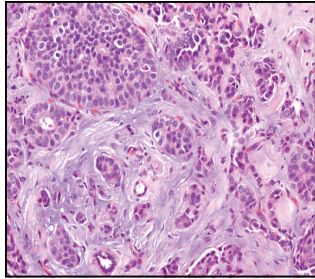


Division of Breast Pathology

Department of Pathology
University of Arkansas for
Medical Sciences

Clinical Services

**Interpretation and
Consultation of
Biopsy and Surgical Resections**



**Our Breast Cancer Panel
includes
immunohistochemistry for**

*Estrogen

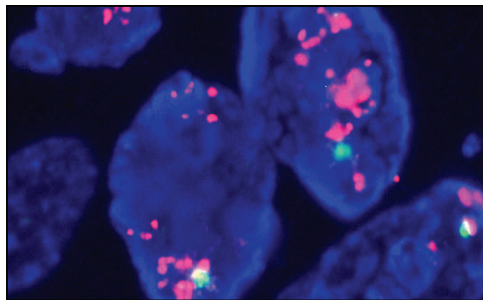
*Progesterone

*Her2neu

*Ki-67

*P53

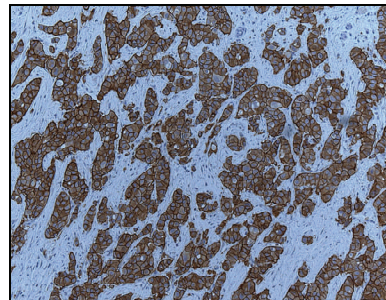
*Fluorescence *in situ*
hybridization for Her2neu



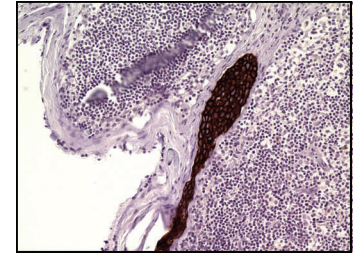
Why UAMS Breast Pathology?

The UAMS Breast Pathology consultation service is the only one of its kind in the state of Arkansas. We have provided expert diagnostic services for UAMS patients for more than a decade. Now we would like to extend our services to all physicians. Our laboratory provides ancillary testing for breast carcinomas, including immunohistochemical studies for estrogen and progesterone. We are fully accredited to run immunohistochemistry studies for Her2neu as well as fluorescence in situ hybridization.

We work closely with other pathologists and specialists to assure the most accurate diagnosis and the best possible treatment plan.



Helpful Links



UAMS Breast Pathology
www.uams.edu/pathology

Follow the Anatomic
Pathology link to Breast
Pathology

UAMS Breast Team
www.uams.edu/breastteam

National Cancer Institute
www.cancer.gov

Follow the Cancer Topics link to
breast cancer

