

Faculty

Murat Gokden, MD

Associate Professor of Pathology
Director of Neuropathology



Medical School

Dokuz Eylul University Medical School
Izmir, Turkey

Anatomic Pathology Residency and Neuropathology Fellowship:

Barnes-Jewish Hospital, Washington
University School of Medicine

Other Fellowships

Surgical Pathology:

M. D. Anderson Cancer Center,
University of Texas

Cytopathology:

University of Arkansas for Medical
Sciences

Board Certifications

Anatomic Pathology, Neuropathology
and Cytopathology

Specimen Protocol

Please call in advance to coordinate
convenient arrangements to send fresh
specimens.

Fresh specimens must arrive between 7:30am
and 4:00pm. Do not send specimens to arrive on
weekends or holidays. Slides, paraffin blocks
and fixed tissue can be sent anytime.

Reports will be faxed to the originating
hospital and to involved physicians, if fax num-
bers are provided. Otherwise, reports will be
promptly mailed.



**Contact information for
general and technical
information, shipping
and supplies**

Neuropathology Division
Department of Pathology
University of Arkansas for Medical Sciences
4301 West Markham Street, # 517
Little Rock, AR 72205

Toll Free: 1-888-233-0327
(501) 603-1963, (501) 686-5170

Fax : (501) 296-1184

www.uams.edu/pathology

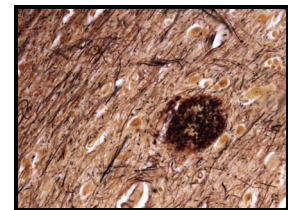
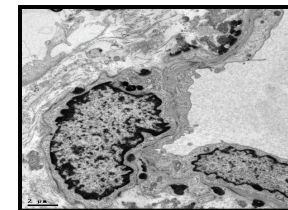
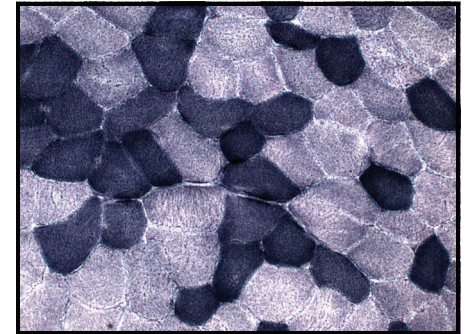
UAMS

UNIVERSITY OF ARKANSAS
FOR MEDICAL SCIENCES

Neuropathology

Referral and

Consultation Services



UAMS

UNIVERSITY OF ARKANSAS
FOR MEDICAL SCIENCES

Division of Neuropathology

Department of Pathology

University of Arkansas for

Medical Sciences

Clinical Services and Patient Care



Central and Peripheral Nervous System Tumors

Evaluation of various benign and malignant tumors of the nervous system and its coverings, skull base tumors, tumors of spinal and paraspinal soft tissues and bone, as well as pituitary gland.

Non-neoplastic Surgical Neuropathology/Brain Biopsy

Evaluation of inflammatory, infectious, demyelinating, dysmyelinating, toxic and metabolic diseases, vasculopathies, including evaluation of skin biopsies for CADASIL.

Muscle and Nerve Biopsy

Evaluation of various myopathies and neuropathies, inflammatory, metabolic and genetic diseases of skeletal muscle and peripheral nerve. Our Division is in close contact with several highly specialized centers for genetic and biochemical testing, as needed.

Autopsy Neuropathology

Evaluation of various neurodegenerative diseases and CJD, among others. Our Division is in close contact with the National Prion Disease Pathology Surveillance Center. We arrange for and coordinate the performance and diagnostic work-up of these and other special autopsies.

Pediatric Neuropathology and Evaluation of Nervous System Malformations

Evaluation of nervous system-related malformations, syndromes and pediatric nervous system disorders.

Cerebrospinal Fluid Cytopathology

Consultation on cerebrospinal fluid cytopathology.

Ancillary Studies

Immunohistochemistry; histochemistry for myelin and axons; immunofluorescence; histochemistry and enzyme reactions for muscle, including Gomori trichrome, ATPase reactions at three different pH, NADH-TR, cytochrome C oxidase, phosphorylase, among others; plastic sections and electron microscopy for differential diagnosis of tumors, work-up of various non-neoplastic diseases and evaluation of muscle and nerve biopsies.

Why UAMS Neuropathology?

The Division of Neuropathology at the University of Arkansas for Medical Sciences is the only academic neuropathology institution in the state of Arkansas.

The Division is comprised of board-certified neuropathologists with more than 40 years of combined experience. In the dynamic field of neuropathology, we follow all changing concepts in classification, nomenclature and reporting through subspecialty meetings, literature, and contact with other experts in the field.

We work closely with pathologists, neurologists and neurosurgeons to assure the best diagnosis and treatment plan for your patient.

Visit our website to learn more:



**www.uams.edu/pathology
and follow the link to neuropathology**
