

To Import a Notepad file

In the Question Database,

choose

Import questions from file

Choose

Browse...

Choose

Browse...



Actions
 indicates a selection is required from the main frame.
 indicates multiple selections are allowed.

Options: Category
 View:
 All categories [Go]
 Create category
 Edit category titles
 Delete:
 ACH [Go]

Options: Question
 Create question:
 Multiple choice [Go]
 Edit question
 Delete questions
 Import questions from file
 Download questions
 Move to:
 ACH [Go]
 View question statistics

Options: Search

View **Designer Options**

Homepage > Quizzes > Question Database > **Import From File**

Import From File

Filename: [Browse...]

Import Cancel

File Browser

Select a file. Tip: To view a file, click .
 If the file you need does not appear in the list below, upload it first, then select it.

Name	Size (bytes)	Date	Time
My-Files			
1.jpg	3306	February 13, 2003	3:33pm
2.jpg	2637	February 13, 2003	3:33pm
2003AnnualGMESurvey_01_questions_Feb_3.txt	7687	February 3, 2004	11:20am
3.jpg	3045	February 13, 2003	3:33pm
4.jpg	2659	February 13, 2003	3:33pm
5.jpg	3465	February 13, 2003	3:33pm
6.jpg	3226	February 13, 2003	3:33pm
7.jpg	3526	February 13, 2003	3:33pm
About_the_Case_Study.htm	1036	February 14, 2003	8:03am

Upload File : To add a file from your computer, **Browse** for it, select an appropriate folder in the drop-down list, then click **Upload**. Select it in the list above and click **Add selected**. Depending on the file size and network connection, this process may take several minutes.

Filename: [Browse...]

Upload to: My-Files [Upload]

Add selected Close Help

Authored by Lea A. Mabry, MEd Copyright ©2004

All RIGHTS RESERVED The content of this document, or any part thereof, may not be reproduced or transmitted in any form or by any means, electronic or mechanical, including photocopying, recording, storage in an information retrieval system or otherwise, without prior written permission of the copyright holder. Contact Office of Educational Development, University of Arkansas for Medical Sciences, Robin M. Smith, Ph.D. at (501) 686-7052 or lamabry@uams.edu for permissions.

To Import a Notepad file

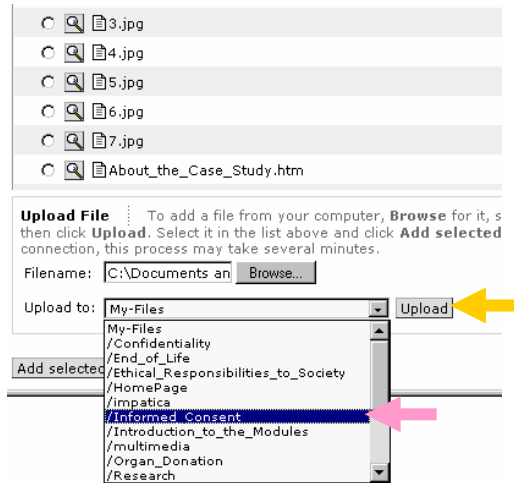
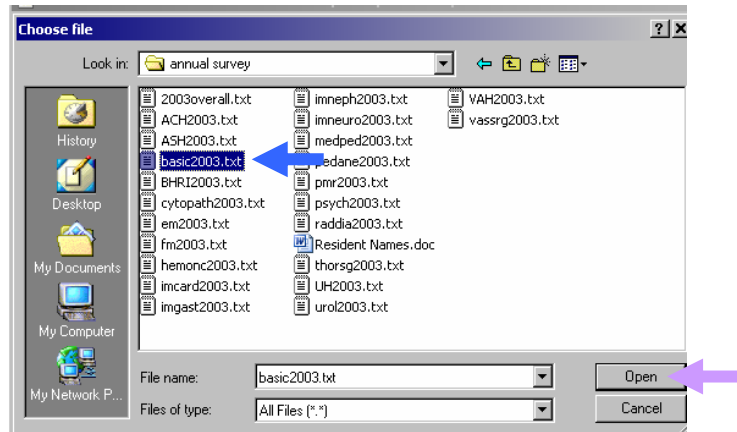
Select the appropriate .txt file ←

Choose ←

Select the appropriate folder for uploading the .txt file into ←

Choose ←

Select  for the uploaded file →



To Import a Notepad file

Choose →

Choose →

The file is imported.

Scroll to the bottom of the page.

Choose →

The questions are now imported into the question database.

The screenshot shows a web application interface. At the top, there is a menu bar with 'File', 'Edit', 'View', 'Favorites', 'Tools', and 'Help'. Below the menu bar is a file selection dialog with a list of files. The file 'basic2003.txt' is selected. Below the list is an 'Upload File' section with a 'Browse...' button and an 'Upload' button. At the bottom of the dialog are 'Add selected', 'Close', and 'Help' buttons. Below the dialog is a 'Designer Options' section with a 'View' button and a breadcrumb trail: 'Homepage > Quizzes > Question Database > Import From File'. The 'Import From File' section has a 'Filename' field containing 'basic2003.txt' and a 'Browse...' button. Below this are 'Import' and 'Cancel' buttons. Below the 'Import' button is another breadcrumb trail: 'Homepage > Quizzes > Question Database > Import From File'. Below this is a table with two rows: 'd. Agree' with a value of '0' and 'e. Strongly agree' with a value of '0'. Below the table is the text 'General feedback: None'. Below this is a 'Question 71:' section with fields for 'Title: basic71', 'Category: basic', and 'Preview:'. The preview text is: 'Other than the end-of-rotation faculty evaluation form, my program e (e.g., types of medical practices/delivery systems, cost-effective care Allow students to choose: One answer Scoring: Cumulative Allow negative score: No Answer layout: Horizontal Answer order: As listed below Indices: Letters'. Below the preview text is a table with two columns: 'Answer' and 'Value (%)'. The table has five rows: 'a. Strongly disagree' with a value of '0', 'b. Disagree' with a value of '0', 'c. Neutral' with a value of '0', 'd. Agree' with a value of '0', and 'e. Strongly agree' with a value of '0'. Below the table is the text 'General feedback: None'. At the bottom of the page are 'Continue' and 'Cancel' buttons.

Authored by Lea A. Mabry, MEd Copyright ©2004

All RIGHTS RESERVED The content of this document, or any part thereof, may not be reproduced or transmitted in any form or by any means, electronic or mechanical, including photocopying, recording, storage in an information retrieval system or otherwise, without prior written permission of the copyright holder. Contact Office of Educational Development, University of Arkansas for Medical Sciences, Robin M. Smith, Ph.D. at (501) 686-7052 or lamabry@uams.edu for permissions.

To Import a Notepad file

Authored by Lea A. Mabry, MEd Copyright ©2004

All RIGHTS RESERVED The content of this document, or any part thereof, may not be reproduced or transmitted in any form or by any means, electronic or mechanical, including photocopying, recording, storage in an information retrieval system or otherwise, without prior written permission of the copyright holder. Contact Office of Educational Development, University of Arkansas for Medical Sciences, Robin M. Smith, Ph.D. at (501) 686-7052 or lamabry@uams.edu for permissions.