

WebCT 4.0: WebDAV

WebDav allows for files to be "dragged and dropped" from the local computer to the WebCT server, eliminating the need to perform the upload procedure.

Login to WebCT →

Choose WebDAV info →

Locate the appropriate course →

Highlight the URL for the course files →

Right click over the highlighted URL and click-on Copy →

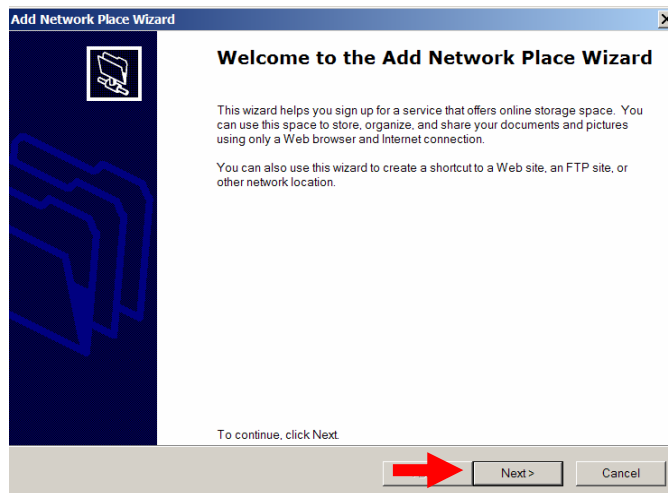
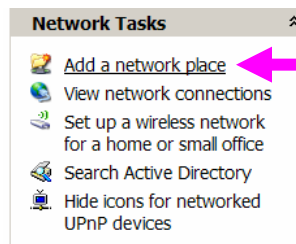
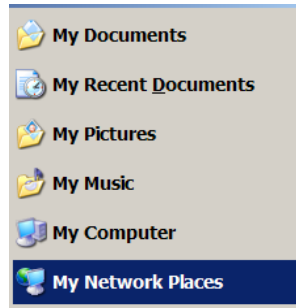
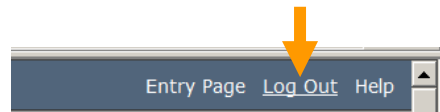
The screenshot shows the WebCT 4.0 interface. At the top, there is a "Login to WebCT" button. Below it is the WebCT logo. The login form has fields for "WebCT ID:" (containing "DoeJohn") and "Password:" (with masked characters). A "Log in" button is below the password field. A blue arrow points down from the "Log in" button to a navigation bar containing "Bookmarks", "Global calendar", "Password settings", "Preferences", "WebDAV info", and "Course functions". A blue arrow points to the "WebDAV info" link. Below the navigation bar is a "Courses" section with a sub-header "Nuclear Medicine Technology - Applicants". A green arrow points to the course "WebCT Summer Blast Basics [LEAM1018]". A purple arrow points to the highlighted URL "http://distance-ed.uams.edu:80/dav/LEAM1018/". Below this, another course "WebCT Summer Blast Basics [LEAM1019]" is listed with its URL "http://distance-ed.uams.edu:80/dav/LEAM1019/". At the bottom, a context menu is open over the first URL, with a yellow arrow pointing to the "Copy" option.

Scroll to the top of the page and logout of WebCT, if desired →

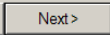
Locate and select My Network Places →

Click-on Add a network place →

In the Add Network Place Wizard, choose →



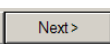
Choose another network location →

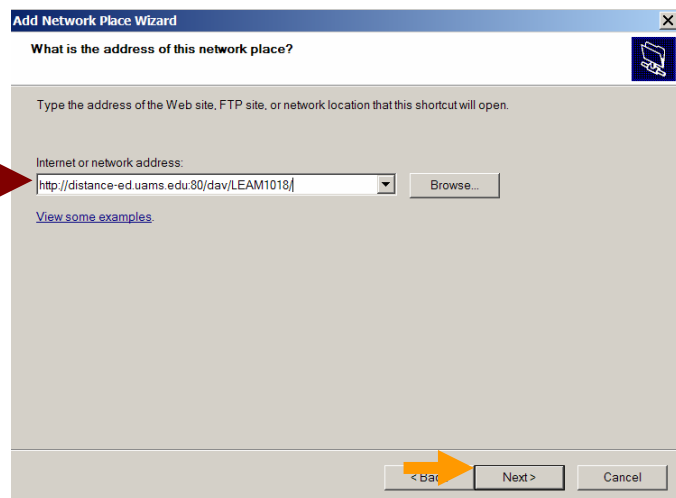
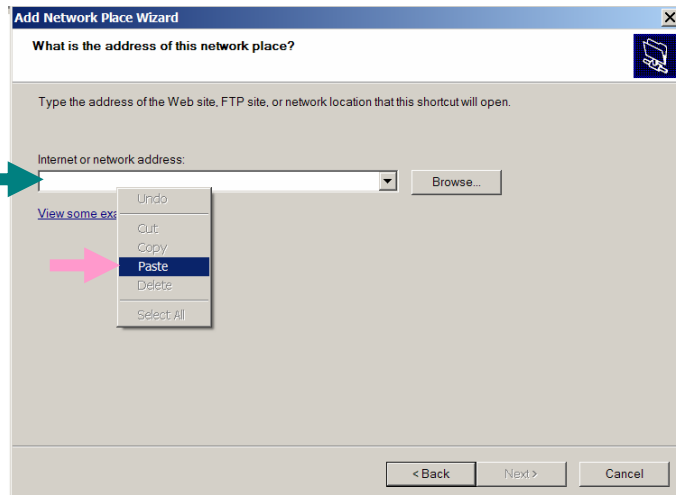
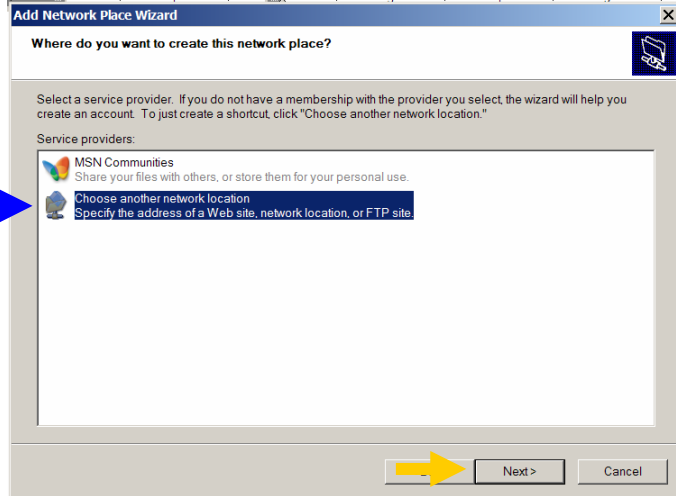
Choose  →

Right click in the Internet or network address: box →

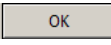
Click-on Paste →

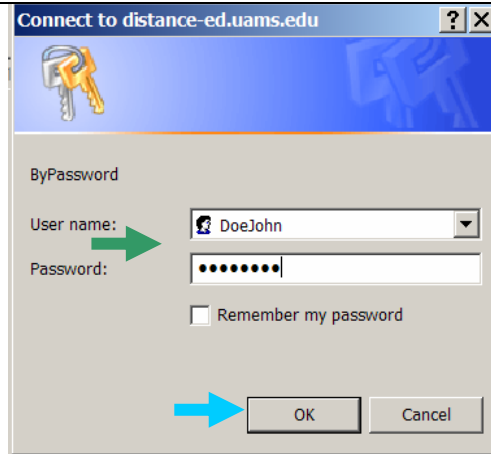
The URL will appear in the box. →

Choose  →

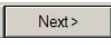


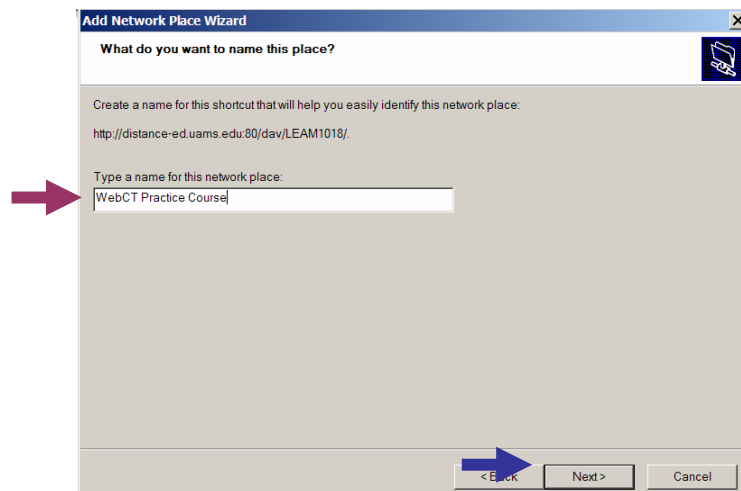
Type the WebCT ID and password into the connect window →

Choose  →

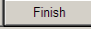


Type a name for the course →

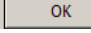
Choose  →



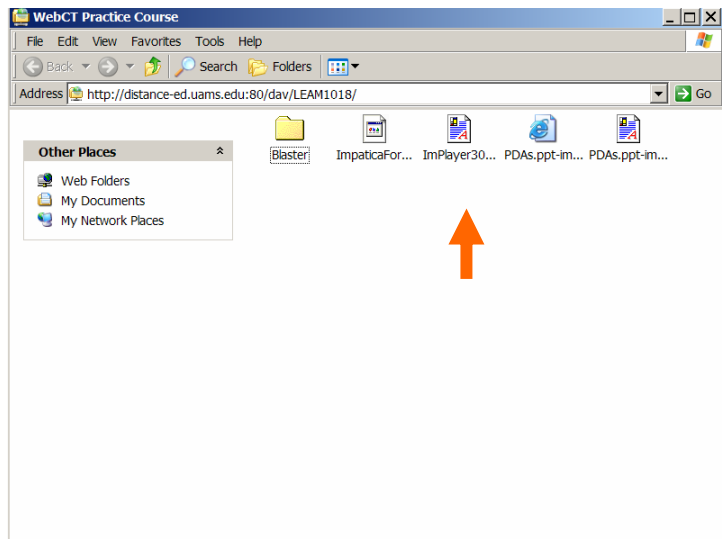
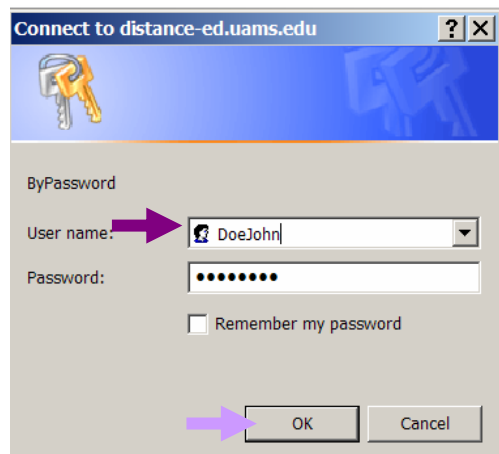
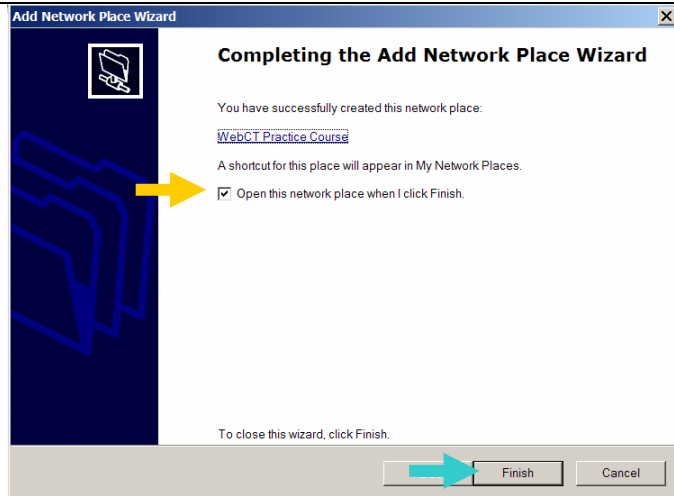
To open this network place when finished, have the marked →

Choose  →

Type a WebCT ID and password to access the network place →

Choose  →

The files for that course will display →



Files can now be "dragged and dropped" directly into the course "My Files" on the server from the saved location, i.e. My Documents →

Repeat these steps for each course for which you wish to drag and drop files.

If you work from home and want to have drag and drop capabilities there, these steps will need to be repeated from that computer.

