

Impatica OnCue 3.3.3

What is Impatica OnCue?

Impatica OnCue simplifies the creation and integration of multimedia presentation components including video and Microsoft PowerPoint presentations into a synchronized presentation format that can be played without plug-ins over the Internet or on corporate intranets.

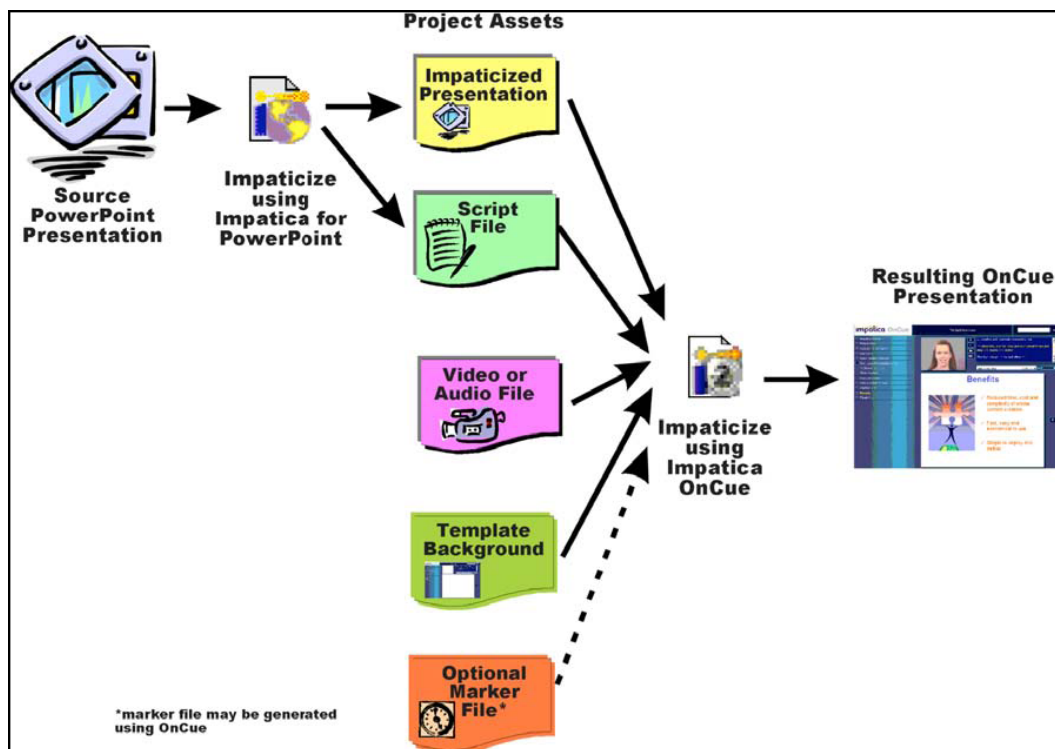
Impatica OnCue allows the user to create two types of presentations for Internet delivery:

1. Full presentations - fully synchronized and include audio and/or video, PowerPoint slides, narrative script, and navigation index
2. Video only presentations

To download: <http://www.uams.edu/tnt/impatica/impatica.asp>

User's manual: <http://www.impatica.com/download/333/ImpaticaOnCuev333UserManual.pdf>

Elements/Assets of an OnCue Presentation:



Creating OnCue Presentations:

1. Create an asset folder and save all of your assets in it once created.

2. Impaticize your PowerPoint file

For instructions refer to <http://www.uams.edu/oed/resources/Impatica.pdf>

Please note:

- Set the slide dimension to 6.30" wide by 4.72" high
- The name you give your Impaticized PowerPoint file will be the name of your OnCue presentation
- The script file for your OnCue presentation can be generated in the Notes section of each slide.

Impatica OnCue 3.3.3

2. Prepare your video

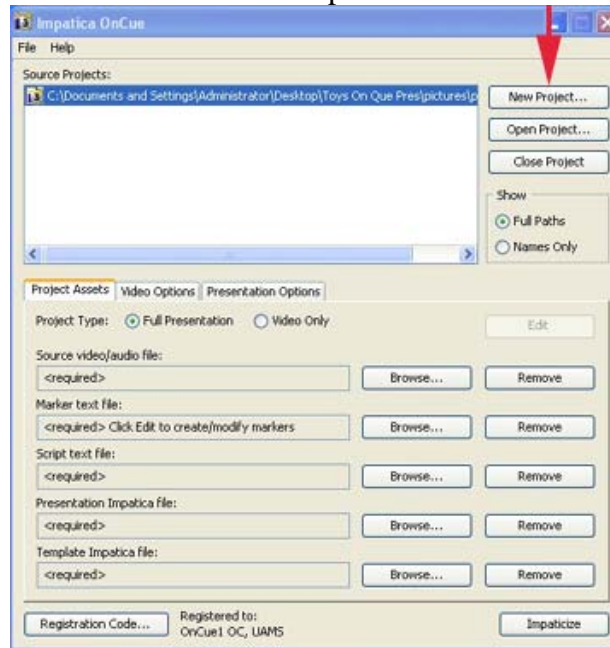
Please note:

- We recommend .avi files – we had trouble with .mov files for Quicktime 6.0 player – when you download the Quicktime player, make sure you choose the “Custom” install and choose to download ALL of the elements for the player. The recommended quick install will not give you all of the components you need for OnCue to work.
- The source video needs to have a frame size of 160 pixels wide by 120 pixels high.

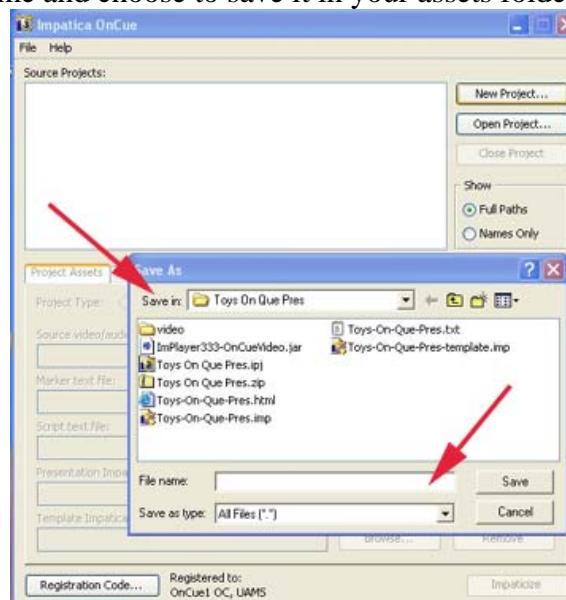
3. Open Impatica OnCue

4. Create a New Project

Click on the New Project button on the main Impatica OnCue screen.

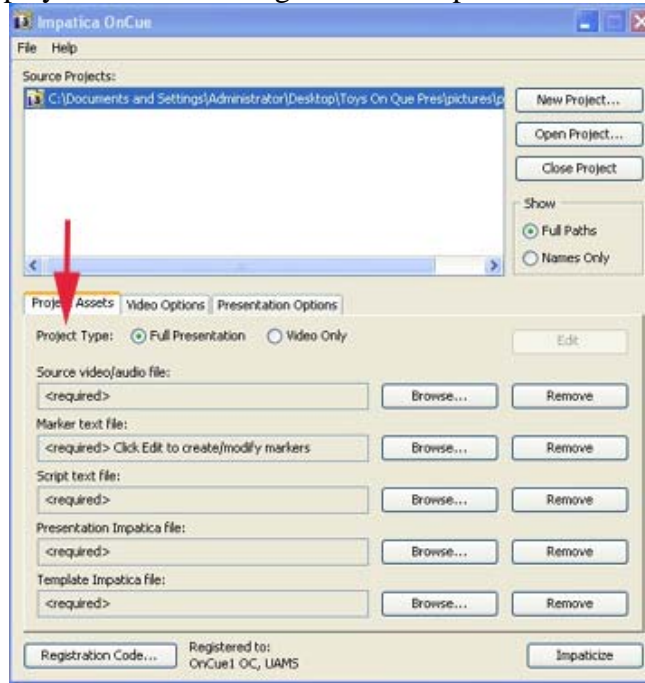


Give your presentation a name and choose to save it in your assets folder.



Impatica OnCue 3.3.3

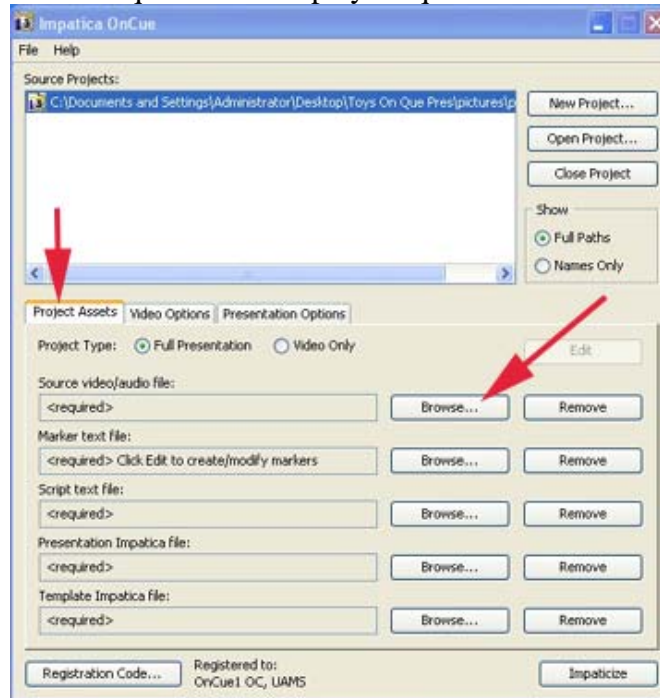
Select the presentation type you would like to generate: full presentation or video only.



5. Select Project Assets

Click on the Project Assets tab.

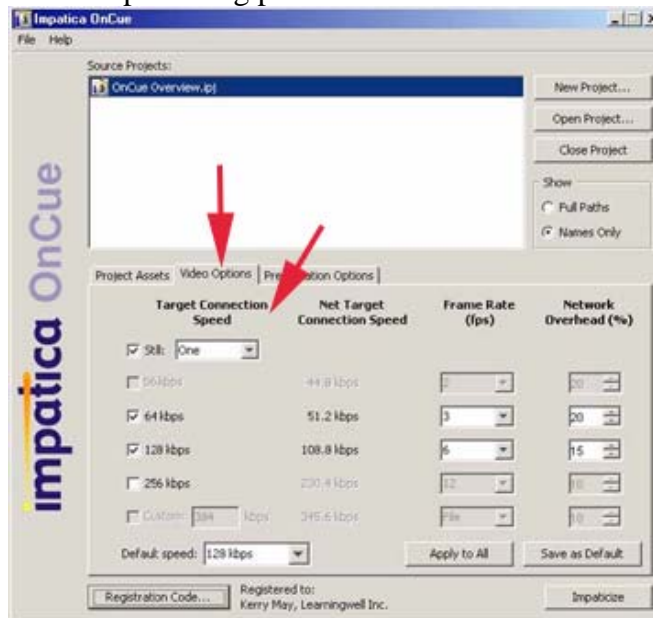
Then select your assets by browsing to your assets folder and associate them with the OnCue presentation. The fields that are required will display "required" until a file is selected.



Impatica OnCue 3.3.3

6. Specify your Video Encoding Options

Click on the Video Options tab. Select the Target Connection Speed that would best fit the Internet connection speeds of your students. You can select more than one speed, but each speed you select adds significant time to the Impaticizing process.



7. Specify your Presentation Options

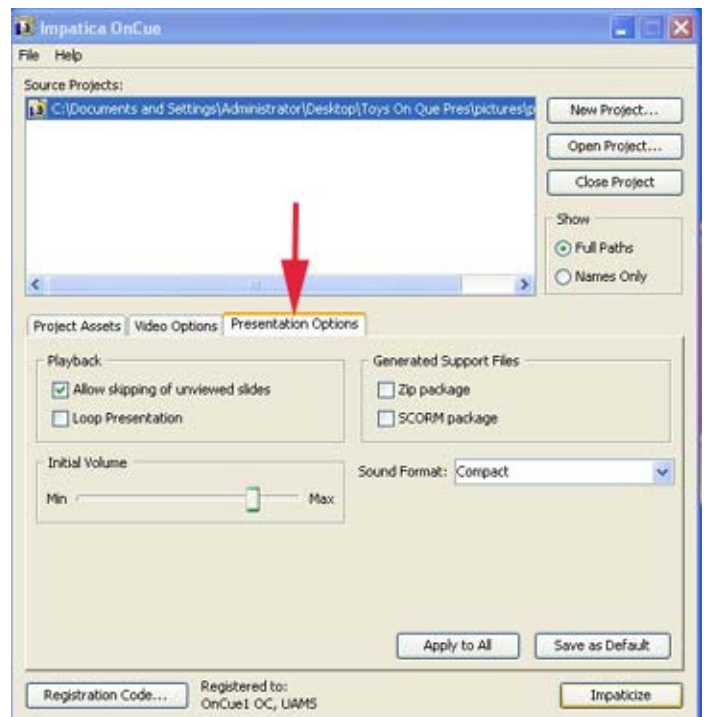
Click on the Presentation Options tab.

Decide if you want to allow your students unrestricted navigation throughout the presentation by selecting the “Allow skipping unviewed slides” button.

Decide if you want to allow the presentation to loop (automatically replay once the presentation has ended) by selecting the “Loop presentation” button.

Check the “Zip package” button to create a zip file that contains all of the components of the OnCue presentation. The zip file will be saved in the project folder. Once the zip file has been created, it can be used to upload the presentation to WebCT.

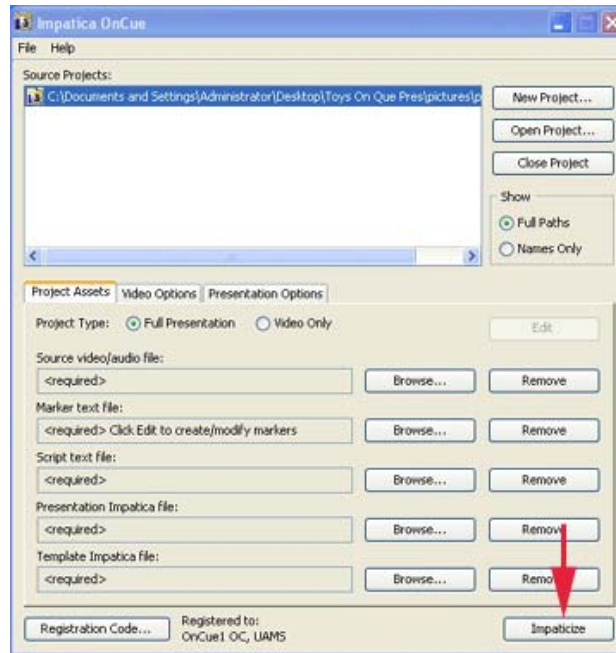
Leave the sound format as “Compact” for Internet viewing.



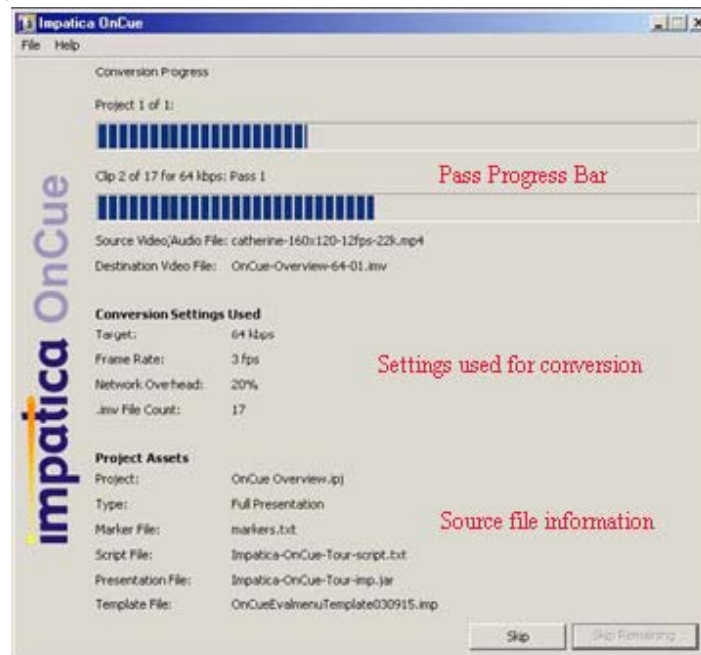
Impatica OnCue 3.3.3

8. Impaticize your OnCue presentation

Click the Impaticize button on the bottom of the screen.



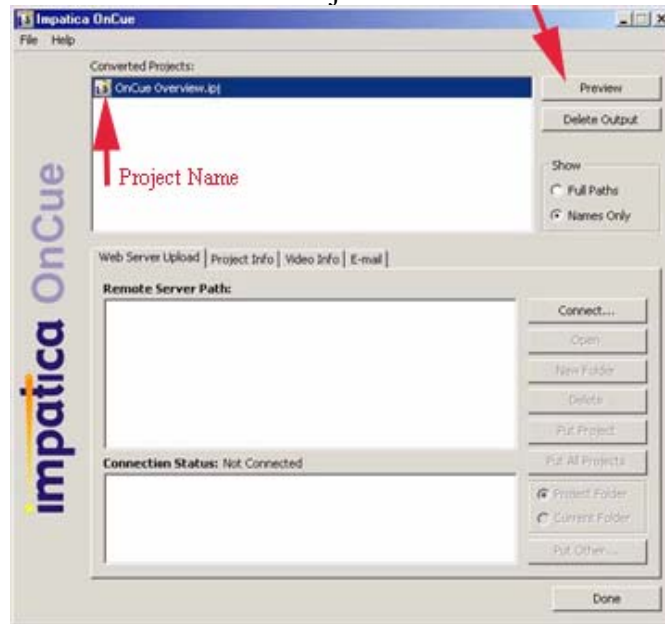
The Project Conversion Progress screen will appear. Check the settings used for conversion and the source file information to make sure it is all correct. If it is not, hit the “Skip” button to stop the conversion process.



Impatica OnCue 3.3.3

9. Preview your OnCue presentation

Select your project name in the Converted Projects list and click Preview.



10. Upload your file to WebCT

Once the connection to WebCT has been established, select the “Put Project” button and upload your file. *Please note: The Library is not familiar with uploading to WebCT. Please contact your WebCT administrators for help.*

