


# Adding an Image File to a Quiz Question

In the Question Database, under Options Question, select Create Question (multiple choice demonstrated)

At Question, Image choose

Browse...



Click the  for the image in the WebCT file manager



Choose

Add selected



If the file has not been previously uploaded, click on

Browse...



Control Panel | View | Designer Options  
- Designer Links - | Homepage > Quizzes > Question Database > Create Question

### Multiple Choice Question

**Question**

Category: Chapter 10

\*Title: 1

\*Question: Where is this fracture located?

Equation: Create equation | Equation editor

Format:  HTML  Text

Image:  **Browse...**

**Settings**

Allow students to choose:  One answer  Multiple answers

Scoring:  Cumulative  All or nothing

Allow negative score:  Yes  No

Answer layout:  Vertical  Horizontal

Answer order:  Randomized  As listed below

Indices:  Numbers  Letters

**Answers**

Answer 1:  Correct answer

Format:  HTML  Text

Value (%):

Feedback 1:

Format:  HTML  Text



<input type="radio"/>		Ch10Quiz.txt	
<input type="radio"/>		Compose_Message.htm	
<input type="radio"/>		course322My_files.zip	5707:
<input type="radio"/>		data_upload.csv	15:
<input type="radio"/>		E-Mail.htm	
<input type="radio"/>		E-Mail_Screen.htm	
<input type="radio"/>		Ethics.zip	1162:
<input type="radio"/>		Ethics_Homepage.jpg	47:
<input type="radio"/>		faq.html	4:
<input checked="" type="radio"/>		femur.jpeg	50:
<input type="radio"/>		filelist.xml	
<input type="radio"/>		GME5678a_questions_May_24.txt	8:



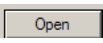
**Upload File** To add a file from your computer, Browse for it, select an appropriate file, then click Upload. Select it in the list above and click Add selected. Depending on your connection, this process may take several minutes.

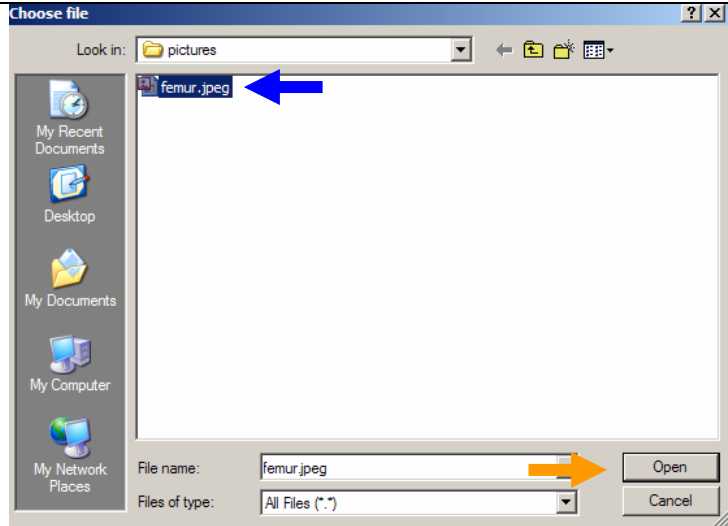
Filename:  **Browse...**

Upload to: My-Files

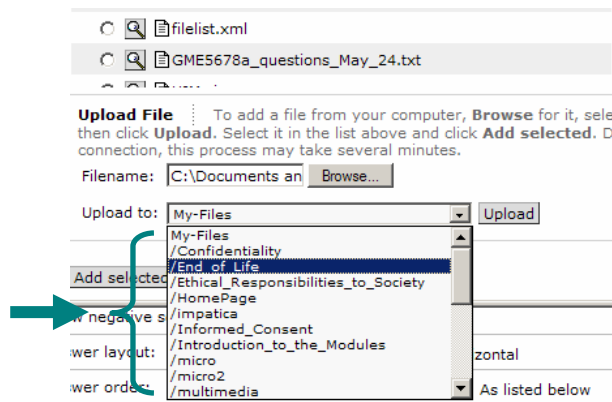


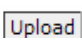
Select the image from where it is saved →

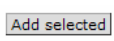
Choose  →



Select the folder to upload to →



Choose  →

Choose  →

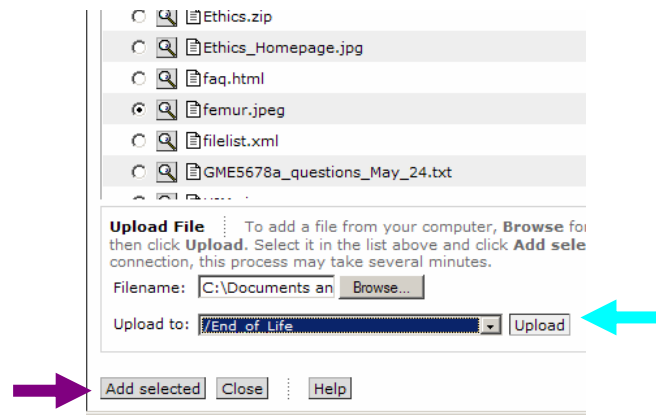


Image is added →

Complete and save the question.

**Multiple Choice Question**

**Question**

Category: Chapter 10

\*Title: 1

\*Question: Where is this fracture located?

Equation:

Format:  HTML  Text

Image:

**Settings**

Allow students to choose:  One answer  Multiple answers

Scoring:  Cumulative  All or nothing

Allow negative score:  Yes  No

Answer layout:  Vertical  Horizontal

Answer order:  Randomized  As listed below

Indices:  Numbers  Letters

**Answers**

Answer 1:  Correct answer

Preview of the question. →

Where is this fracture located?



- a. radius
- b. tibia
- c. femur
- d. clavicle
- e. ulna