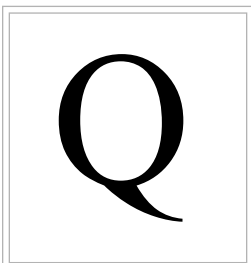
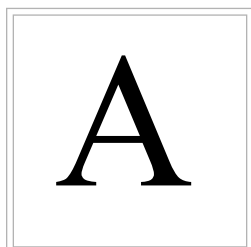


Question(s)



My students can't access the archive.

Answer(s)



- When you create an archive you have to make it accessible to your students.
- If your archive is accessible it will have a green circle next to it.



The screenshot shows a Wimba Classroom interface. At the top, there are buttons for "Enter this Room" and "Close this Room", and a "Wimba Class" label. Below this is a section for "Wimba Test Room (Open)" with a sub-header "Wimba Room for development purposes." and "Phone Access:" information including "Dial-in numbers: Phone: (201) 549-7592", "Pin codes: Instructor: 65801487", and "Student: 65801479". To the right is a "Setup Wizard" section with a red arrow pointing to a link "Run the setup wizard" and text "to sure that your computer is to use the Wimba Classro". Below this is a section titled "Here is the list of the recorded archives for this room:" followed by a table:

Title	Type	Enter	Access
Wimba Test Room - 03/12/2009 16:10	Archive		

A red arrow points from the right side of the table to the green circle in the "Access" column.

- For more on how to make an archive accessible see the tutorial(s) on “Making an archive Accessible.”
- [Click here to visit the Tutorial Section](#)