

PREFERRED PATHS OF EXIT

In general: The preferred path of exit from the B and G levels is through one of two G level tunnels that connect ED II with the hospital: the “mirrored tunnel” at the southeast corner of the G level, or the “carpeted tunnel” at the northeast corner of the G level. These exit routes are preferred in that evacuation will not be complicated by inclement weather conditions outside and will reduce interference with arriving emergency vehicles or personnel. Evacuation from the upper floors of ED II and COPH should be down the stairwells and exiting on the G level. **If alarm is sounding in either ED II only or COPH only, exit may occur to the non-alarmed building.**

Alternatives: Preferred paths should be used unless emergency circumstances dictate otherwise, in which case any exit to the exterior is an acceptable alternative.

Handicapped persons: The preferred path of exit is to the adjacent building (ED II or COPH) depending on which is in alarm. On the ED II 5th floor one can also exit through the south end bridge into the Shorey Building. The preferred path of exit for handicapped persons on the 9th floor of ED II is down to a lower floor and exit into the adjoining COPH building.

SEVERE WEATHER

In the event of severe weather (e.g. tornado) upper floors of ED II (1st floor and higher) and COPH (G level and higher) will be evacuated. The storm siren will be sounded at the Markham Street Fire Station to initiate evacuation to lower floors. All individuals will be advised by the overhead paging system to use the stairs (not elevators) and move to the COPH B level or the ED II G or B levels. Evacuating personnel should not leave the buildings and may further be directed to the hospital through one of the two connecting G level tunnels in ED II. If evacuation to lower floors is impossible, please seek areas such as hallways in the center of the floor one is on.

ALL CLEAR

1. Fire: Evacuation orders will not be terminated until an all clear signal is received from Little Rock fire personnel or UAMS Police Officers on the scene. Academic Services/Media Services personnel may assist in relaying the all clear signal as dictated by the situation.
2. Storm: The situation will be monitored by telephone contact from the ED II B level offices of Media Services. The all clear signal will be announced on the overhead paging system.

CENTERS OF REFUGE

ED II — The two restrooms (men’s and women’s) at the southwest corner on the 6th, 8th and 9th floors are designated as “centers of refuge”, to be used by any person whose physical disability prevents evacuating the building by use of stairways. (Room numbers 6/100C, 6/100D, 8/100C, 8/100D, 9/100, 9/100A)

COPH — The two restrooms (men’s and women’s) at the north end on the 8th floor are designated as “centers of refuge”. (Room numbers 8205, 8270)

Should evacuation of the building be impractical, disabled individuals should proceed immediately to the most accessible center of refuge and await rescue.

Centers of Refuge denoted by this symbol



Do not use elevators in case of Emergency!



UNIVERSITY OF ARKANSAS FOR MEDICAL SCIENCES

TEACHING CENTER EVACUATION PLAN

Education II (ED II) and College of Public Health (COPH)

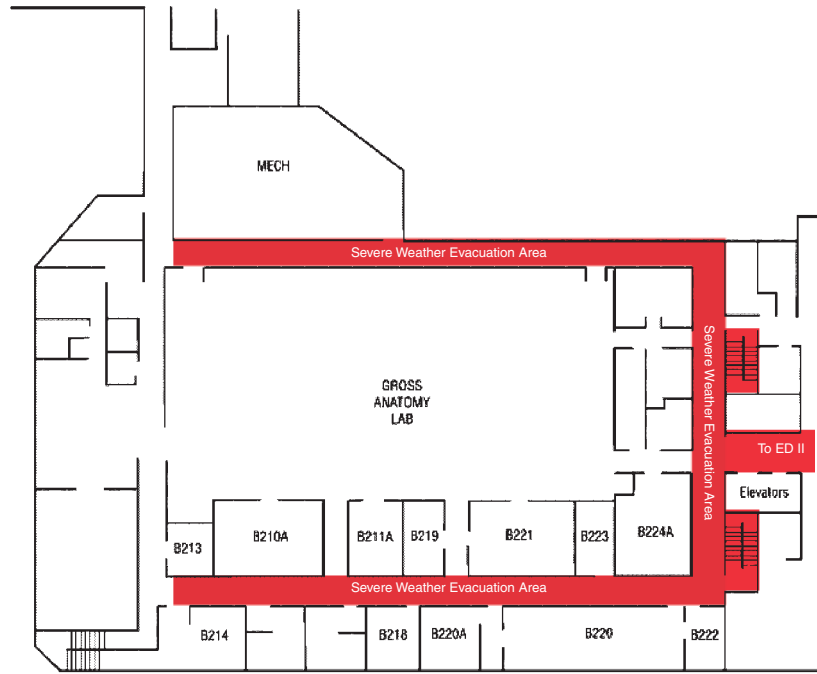
EVACUATION OF THE BUILDINGS

An alarm sounding within either building is the signal for immediate and complete evacuation of the building. If the alarm is sounding in ED II, you may evacuate to the COPH building or vice versa. The alarms may sound as a result of fire, explosion, poisonous gas leak or other life threatening situations. All personnel in the buildings are advised to use the stairs only (not elevators) and exit the building.

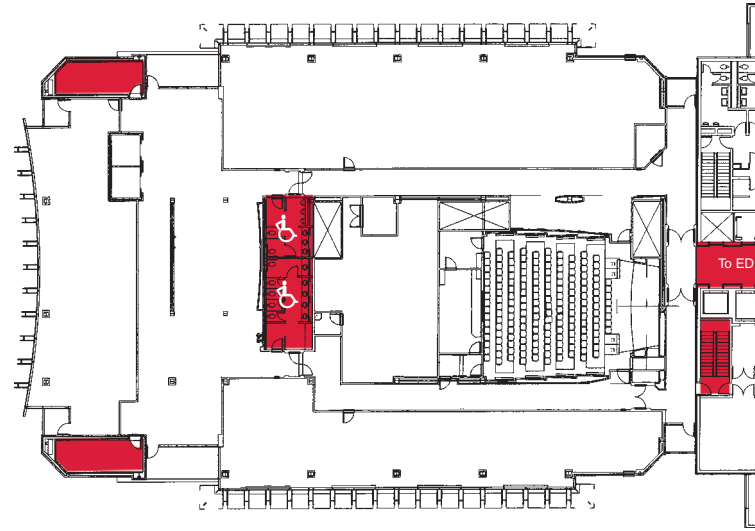
Emergency Phone Numbers

Fire.....	686-5333
Biohazard (pager) — infectious agents, blood, body fluids	688-2148
Chemical Spills	686-5536
All other Emergencies — utilities, fume hood...	686-6424
Medical Emergency	911
Police Department.....	686-7777

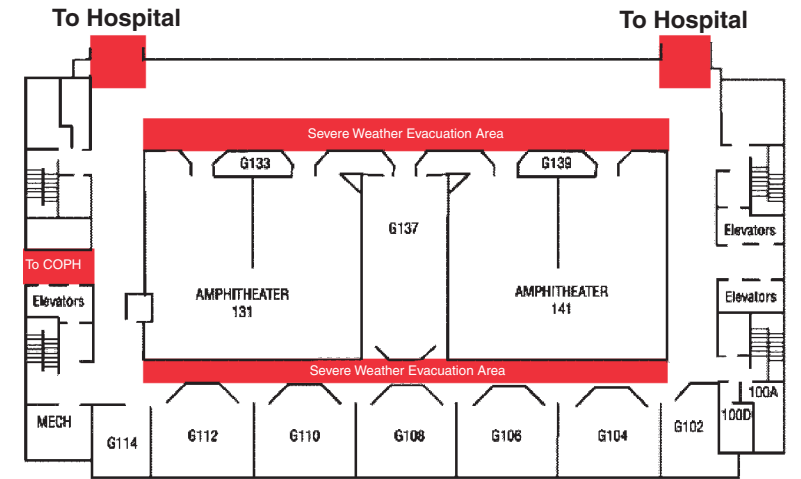
COPH Basement Floor



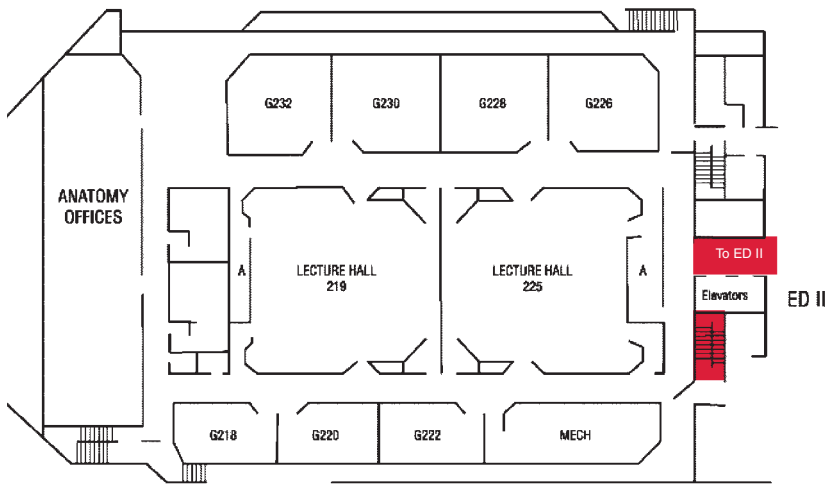
COPH 8th Floor



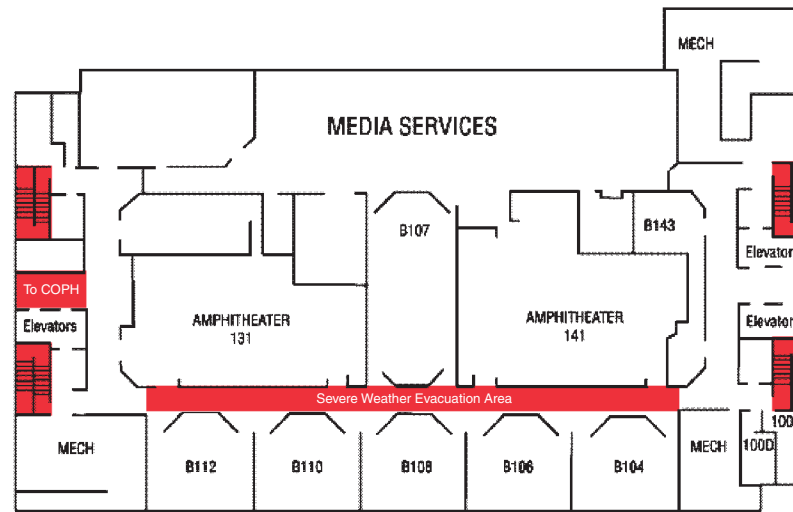
Education II Ground Floor



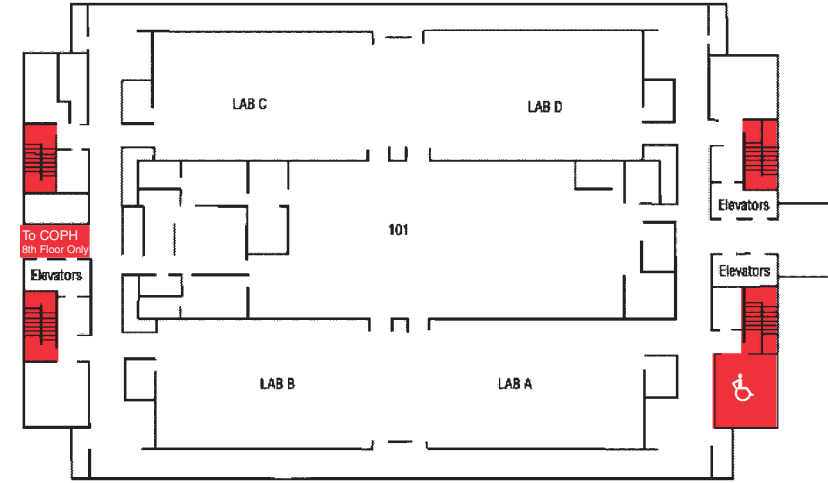
COPH Ground Floor



Education II Basement Floor



Education II 8th and 9th Floor



Preferred paths are shown in red, but if blocked, use any accessible path.
Do not use elevators in case of Emergency!