

Molecular Probes

Flow Cytometry Product List

Cell Biology

Cell Function Highlight specific aspects of cell metabolism, track cell growth and proliferation, and assess cell viability and vitality.

Apoptosis

Cat #	Product Name	Cell Status	Flow Cytometer Laser Lines	Excitation Maxima	Emission Maxima
A23202	annexin V, Alexa Fluor® 350 conjugate *100 assays*	L	UV	346	442
A13201	annexin V, Alexa Fluor® 488 conjugate *100 assays*	L	488	495	519
A13202	annexin V, Alexa Fluor® 568 conjugate *100 assays*	L	532	578	603
A13203	annexin V, Alexa Fluor® 594 conjugate *100 assays*	L	532	590	617
A23204	annexin V, Alexa Fluor® 647 conjugate *100 assays*	L	633	650	665
New A35110	annexin V, allophycocyanin conjugate (APC annexin V) *50 assays*	L	633	650	660
New A35111	annexin V, R-phycoerythrin conjugate (R-PE annexin V) *50 assays*	L	488, 532	496, 546, 565	578
A23210	APO-BrdUTM TUNEL Assay Kit *with Alexa Fluor® 488 anti-BrdU* *60 assays*	F	488	495	519
New V35112	Vybrant® Apoptosis Assay Kit #8 *R-phycoerythrin annexin V/SYTOX® Green* *50 assays*	L	488	496 ^A , 546 ^A , 565 ^A , 504 ^D	578 ^A , 530 ^D
New V35113	Vybrant® Apoptosis Assay Kit #9 *allophycocyanin annexin V/SYTOX® Green* *50 assays*	L	488 & 633	650 ^A , 504 ^D	660 ^A , 523 ^D
New V35114	Vybrant® Apoptosis Assay Kit #10 *allophycocyanin annexin V/C ₁₂ -resazurin/SYTOX® Green* *50 assays*	L	488 & 633	650 ^A	660 ^A
V13240	Vybrant® Apoptosis Assay Kit #1 *Alexa Fluor® 488 annexin V/SYTOX® Green* *50 assays*	L	488	495 ^A , 504 ^D	519 ^A , 523 ^D
V13241	Vybrant® Apoptosis Assay Kit #2 *Alexa Fluor® 488 annexin V/propidium iodide* *50 assays*	L	488	495 ^A , 535 ^D	519 ^A , 617 ^D
V13242	Vybrant® Apoptosis Assay Kit #3 *FITC annexin V/propidium iodide* *50 assays*	L	488	495 ^A , 535 ^D	519 ^A , 617 ^D
V13243	Vybrant® Apoptosis Assay Kit #4 *YO-PRO®-1/propidium iodide* *200 assays*	L	488	491 ^A , 535 ^D	509 ^A , 617 ^D
V13244	Vybrant® Apoptosis Assay Kit #5 *Hoechst 33342/propidium iodide* *200 assays*	L	UV & 488	346 ^A , 535 ^D	480 ^A , 617 ^D
V23200	Vybrant® Apoptosis Assay Kit #6 *biotin-X annexin V/Alexa Fluor® 350 streptavidin/propidium iodide* *50 assays*	L	UV & 488	346 ^A , 535 ^D	442 ^A , 617 ^D
V23201	Vybrant® Apoptosis Assay Kit #7 *Hoechst 33342/YO-PRO®-1/propidium iodide* *200 assays*	L	UV & 488	346 ^A , 491 ^A , 535 ^D	480 ^A , 509 ^A , 617 ^D
New V35116	Vybrant® Apoptosis Assay Kit #11 *Alexa Fluor® 488 annexin V/MitoTracker® Red CMXRos* *50 assays*	L	488	495 ^A	519 ^A
V13180	Vybrant® Multidrug Resistance Assay Kit	L	488	494	517

Calcium

Cat #	Product Name	Cell Status	Flow Cytometer Laser Lines	Excitation Maxima	Emission Maxima
C3011MP	Calcium Green™-1, AM *cell permeant*	L	488	506	531
C3012	Calcium Green™-1, AM *cell permeant* *special packaging*	L	488	506	531
C3732	Calcium Green™-2, AM *cell permeant* *special packaging*	L	488	503	536
C3739	Calcium Green™-5N, AM *cell permeant* *special packaging*	L	488	506	532
F14218	fluo-3, AM *1 mM solution in DMSO* *cell permeant*	L	488, 532	506	526
F1241	fluo-3, AM *cell permeant*	L	488, 532	506	526
F1242	fluo-3, AM *cell permeant* *special packaging*	L	405, 488, 532	506	526
F41217	fluo-4, AM *1 mM solution in DMSO* *cell permeant*	L	488	494	516
F14201	fluo-4, AM *cell permeant* *special packaging*	L	488	494	516
F14202	fluo-4, AM *packaged for high-throughput screening*	L	488	494	516
F3020	Fura Red™, AM *cell permeant*	L	UV, 405, 488	458	597
F3021	Fura Red™, AM *cell permeant* *special packaging*	L	UV, 405, 488	458	597
I1226	indo-1, AM *1 mM solution in dry DMSO* *cell permeant*	L	UV	330	401 (+Ca ²⁺), 475 (-Ca ²⁺)
I1203	indo-1, AM *cell permeant*	L	UV	330	401 (+Ca ²⁺), 475 (-Ca ²⁺)
I1223	indo-1, AM *cell permeant* *special packaging*	L	UV	330	401 (+Ca ²⁺), 475 (-Ca ²⁺)

A = Apoptotic. D = Dead. F = Fixed cells only. L = Live cells only.

Flow Cytometry Products

Calcium - Continued

Cat #	Product Name	Cell Status	Flow Cytometer Laser Lines	Excitation Maxima	Emission Maxima
O6807	Oregon Green® 488 BAPTA-1, AM *cell permeant* *special packaging*	L	488	494	523
O6809	Oregon Green® 488 BAPTA-2, AM *cell permeant* *special packaging*	L	488	494	523

Gene Reporter

Cat #	Product Name	Cell Status	Flow Cytometer Laser Lines	Excitation Maxima	Emission Maxima
A11120	anti-green fluorescent protein, mouse IgG _{2a} , monoclonal 3E6 (anti-GFP, mAb 3E6)	F	NA	NA	NA
A11122	anti-green fluorescent protein, rabbit IgG fraction (anti-GFP, IgG) *2 mg/mL*	F	NA	NA	NA
A21311	anti-green fluorescent protein, rabbit IgG fraction, Alexa Fluor® 488 conjugate (anti-GFP, IgG, Alexa Fluor® 488 conjugate) *2 mg/mL*	F	488	495	519
New A31851	anti-green fluorescent protein, rabbit IgG fraction, Alexa Fluor® 555 conjugate (anti-GFP, IgG, Alexa Fluor® 555 conjugate) *2 mg/mL*	F	532	555	565
A21312	anti-green fluorescent protein, rabbit IgG fraction, Alexa Fluor® 594 conjugate (anti-GFP, IgG, Alexa Fluor® 594 conjugate) *2 mg/mL*	F	532	590	617
New A31852	anti-green fluorescent protein, rabbit IgG fraction, Alexa Fluor® 647 conjugate (anti-GFP, IgG, Alexa Fluor® 647 conjugate) *2 mg/mL*	F	633	650	668
F1931	FluoReporter® lacZ Flow Cytometry Kit *250 assays*	L	488	494	518
F1930	FluoReporter® lacZ Flow Cytometry Kit *50 assays*	L	488	494	518
F1179	fluorescein di-β-D-galactopyranoside (FDG)	L	488	494	514
F2881	fluorescein di-β-D-glucopyranoside (FDGlu)	L	488	494	518
F2915	fluorescein di-β-D-glucuronide (FDGlcU)	L	488	494	518

Glutathione

Cat #	Product Name	Cell Status	Flow Cytometer Laser Lines	Excitation Maxima	Emission Maxima
M1378	monobromobimane (mBBr)	L	UV, 405	394	490
M20381	monobromobimane (mBBr) *FluoroPure™ grade*	L	UV, 405	394	490
M1381MP	monochlorobimane (mBCl)	L	UV, 405	394	490

Membrane Potential

Cat #	Product Name	Cell Status	Flow Cytometer Laser Lines	Excitation Maxima	Emission Maxima
B436	bis-(1,3-dibutylbarbituric acid)pentamethine oxonol (DiBAC ₄ (5))	L	488	590	616
B438	bis-(1,3-dibutylbarbituric acid)trimethine oxonol (DiBAC ₄ (3))	L	488	493	516
B413	bis-(1,3-diethylthiobarbituric acid)trimethine oxonol (DiSBAC ₂ (3))	L	488, 532	535	560
D14730	3,3'-diethyloxycarbocyanine iodide (DiOC ₂ (3))	L	488	482	497
D378	3,3'-diheptyloxycarbocyanine iodide (DiOC ₇ (3))	L	488	482	504
D273	3,3'-dihexyloxycarbocyanine iodide (DiOC ₆ (3))	L	488	484	501
D272	3,3'-dipentyloxycarbocyanine iodide (DiOC ₅ (3))	L	488	484	500
H14700	1,1',3,3,3',3'-hexamethylindodicarbocyanine iodide (DiIC ₆ (5))	L	633	638	658

Mitochondria

Cat #	Product Name	Cell Status	Flow Cytometer Laser Lines	Excitation Maxima	Emission Maxima
D632	dihydrorhodamine 123	L	488, 532	507	529
M7511	MitoTracker® Orange CM-H ₂ TMRos *special packaging*	L	488, 532	554	576
M7510	MitoTracker® Orange CMTMRos *special packaging*	L	488, 532	554	576
M7513	MitoTracker® Red CM-H ₂ XRos *special packaging*	L	488, 532	579	599
M7512	MitoTracker® Red CMXRos *special packaging*	L	488, 532	579	599
R302	rhodamine 123	L	488, 532	507	529
T3168	5,5',6,6'-tetrachloro-1,1',3,3'-tetraethylbenzimidazolylcarbocyanine iodide (JC-1; CBIC ₂ (3))	L	488	514	529
T669	tetramethylrhodamine, ethyl ester, perchlorate (TMRE)	L	532	549	574
T668	tetramethylrhodamine, methyl ester, perchlorate (TMRM)	L	532	549	573

Oxidative Burst

Cat #	Product Name	Cell Status	Flow Cytometer Laser Lines	Excitation Maxima	Emission Maxima
F2902	Fc OxyBURST® Green assay reagent *25 assays* *3 mg/mL*	L	488	495	524

F = Fixed cells only. L = Live cells only. NA = Not applicable.

pH

Cat #	Product Name	Cell Status	Flow Cytometer Laser Lines	Excitation Maxima	Emission Maxima
B1150	2',7'-bis-(2-carboxyethyl)-5-(and-6)-carboxyfluorescein, acetoxymethyl ester (BCECF, AM)	L	488, 532	503	528
B1170	2',7'-bis-(2-carboxyethyl)-5-(and-6)-carboxyfluorescein, acetoxymethyl ester (BCECF, AM) *special packaging*	L	488, 532	503	528
B3051	2',7'-bis-(2-carboxyethyl)-5-(and-6)-carboxyfluorescein, acetoxymethyl ester (BCECF, AM) *1 mg/mL solution in dry DMSO*	L	488, 532	503	528
C1271	5-(and-6)-carboxy SNARF [®] -1, acetoxymethyl ester, acetate	L	488	548, 576	587, 635
C1272	5-(and-6)-carboxy SNARF [®] -1, acetoxymethyl ester, acetate *special packaging*	L	488	548, 576	587, 635
L7525	LysoTracker [®] Blue DND-22 *1 mM solution in DMSO* *special packaging*	L	UV	373	422
L7526	LysoTracker [®] Green DND-26 *1 mM solution in DMSO* *special packaging*	L	488	504	511
L7528	LysoTracker [®] Red DND-99 *1 mM solution in DMSO* *special packaging*	L	532	577	590
L12491	LysoTracker [®] Yellow HCK-123 *1 mM solution in DMSO* *special packaging*	L	405	466	536

Phagocytosis

Cat #	Product Name	Cell Status	Flow Cytometer Laser Lines	Excitation Maxima	Emission Maxima
E13231	<i>Escherichia coli</i> (K-12 strain) BioParticles [®] , Alexa Fluor [®] 488 conjugate	L	488	495	519
E23370	<i>Escherichia coli</i> (K-12 strain) BioParticles [®] , Alexa Fluor [®] 594 conjugate	L	532	590	617
E2861	<i>Escherichia coli</i> (K-12 strain) BioParticles [®] , fluorescein conjugate	L	488	494	518
E2862	<i>Escherichia coli</i> (K-12 strain) BioParticles [®] , tetramethylrhodamine conjugate	L	532	555	580
E2870	<i>Escherichia coli</i> BioParticles [®] opsonizing reagent	L	NA	NA	NA
S23371	<i>Staphylococcus aureus</i> (Wood strain without protein A) BioParticles [®] , Alexa Fluor [®] 488 conjugate	L	488	495	519
S23372	<i>Staphylococcus aureus</i> (Wood strain without protein A) BioParticles [®] , Alexa Fluor [®] 594 conjugate	L	532	590	617
S2851	<i>Staphylococcus aureus</i> (Wood strain without protein A) BioParticles [®] , fluorescein conjugate	L	488	494	518
S2859	<i>Staphylococcus aureus</i> (Wood strain without protein A) BioParticles [®] , unlabeled	L	NA	NA	NA
S2860	<i>Staphylococcus aureus</i> BioParticles [®] opsonizing reagent	L	NA	NA	NA
V6694	Vybrant [®] Phagocytosis Assay Kit *250 assays*	L	488	494	518
Z23373	zymosan A (<i>S. cerevisiae</i>) BioParticles [®] , Alexa Fluor [®] 488 conjugate	L	488	495	519
Z23374	zymosan A (<i>S. cerevisiae</i>) BioParticles [®] , Alexa Fluor [®] 594 conjugate	L	532	590	617
Z2841	zymosan A (<i>S. cerevisiae</i>) BioParticles [®] , fluorescein conjugate	L	488	494	518
Z2849	zymosan A (<i>S. cerevisiae</i>) BioParticles [®] , unlabeled	L	NA	NA	NA
Z2850	zymosan A BioParticles [®] opsonizing reagent	L	NA	NA	NA

Proliferation

Cat #	Product Name	Cell Status	Flow Cytometer Laser Lines	Excitation Maxima	Emission Maxima
A23150	ABSOLUTE-S [™] SBIP Cell Proliferation Assay Kit *with Alexa Fluor [®] 488 anti-BrdU* *50 assays*	F	488	495	519
A21300	anti-bromodeoxyuridine, mouse IgG ₁ , monoclonal PRB-1 (anti-BrdU)	F	NA	NA	NA
A21303	anti-bromodeoxyuridine, mouse IgG ₁ , monoclonal PRB-1, Alexa Fluor [®] 488 conjugate (anti-BrdU, Alexa Fluor [®] 488 conjugate)	F	488	496	519
A21307	anti-bromodeoxyuridine, mouse IgG ₁ , monoclonal PRB-1, Alexa Fluor [®] 532 conjugate (anti-BrdU, Alexa Fluor [®] 532 conjugate)	F	532	531	554
A21308	anti-bromodeoxyuridine, mouse IgG ₁ , monoclonal PRB-1, Alexa Fluor [®] 546 conjugate (anti-BrdU, Alexa Fluor [®] 546 conjugate)	F	532	556	573
A21304	anti-bromodeoxyuridine, mouse IgG ₁ , monoclonal PRB-1, Alexa Fluor [®] 594 conjugate (anti-BrdU, Alexa Fluor [®] 594 conjugate)	F	532	590	617
A21305	anti-bromodeoxyuridine, mouse IgG ₁ , monoclonal PRB-1, Alexa Fluor [®] 647 conjugate (anti-BrdU, Alexa Fluor [®] 647 conjugate)	F	633	650	668
A21306	anti-bromodeoxyuridine, mouse IgG ₁ , monoclonal PRB-1, Alexa Fluor [®] 660 conjugate (anti-BrdU, Alexa Fluor [®] 660 conjugate)	F	633	667	690
A21301MP	anti-bromodeoxyuridine, mouse IgG ₁ , monoclonal PRB-1, biotin-XX conjugate (anti-BrdU, biotin conjugate)	F	NA	NA	NA
B23151	5-bromo-2'-deoxyuridine (BrdU)	F	NA	NA	NA
New C34554	CellTrace [™] CFSE Cell Proliferation Kit *for flow cytometry*	L	488	494	514
C7614	ChromaTide [®] BODIPY [®] FL-14-dUTP *1 mM in TE buffer*	F	488	505	513

F = Fixed cells only. L = Live cells only. NA = Not applicable.

Flow Cytometry Products

Reactive Nitrogen Species

Cat #	Product Name	Cell Status	Flow Cytometer Laser Lines	Excitation Maxima	Emission Maxima
D23842	DAF-FM diacetate (4-amino-5-methylamino-2',7'-difluorofluorescein diacetate)	L	488	495	515
D23844	DAF-FM diacetate (4-amino-5-methylamino-2',7'-difluorofluorescein diacetate) *special packaging*	L	488	495	515

Reactive Oxygen Species

Cat #	Product Name	Cell Status	Flow Cytometer Laser Lines	Excitation Maxima	Emission Maxima
C400	5-(and-6)-carboxy-2',7'-dichlorodihydrofluorescein diacetate (carboxy-H ₂ DCFDA) *mixed isomers*	L	488	504	529
C13293	5-(and-6)-carboxy-2',7'-difluorodihydrofluorescein diacetate (carboxy-H ₂ DFDA) *mixed isomers*	L	488	492	518
C6827	5-(and-6)-chloromethyl-2',7'-dichlorodihydrofluorescein diacetate, acetyl ester (CM-H ₂ DCFDA) *mixed isomers* *special packaging*	L	488	495	529
D399	2',7'-dichlorodihydrofluorescein diacetate (2',7'-dichlorofluorescein diacetate; H ₂ DCFDA)	L	488	495	529
D23805	dihydrocalcein, AM *special packaging*	L	488	494	517
D1168	dihydroethidium (hydroethidine)	L	488, 532	518	605
D11347	dihydroethidium (hydroethidine) *special packaging*	L	488, 532	518	605
D23107	dihydroethidium (hydroethidine) *5 mM stabilized solution in DMSO*	L	488, 532	518	605
D632	dihydrorhodamine 123	L	488, 532	507	529
D23806	dihydrorhodamine 123 *5 mM stabilized solution in DMSO*	L	488, 532	507	529

Tracing / Tracking

Cat #	Product Name	Cell Status	Flow Cytometer Laser Lines	Excitation Maxima	Emission Maxima
C2925	CellTracker™ Green CFDA (5-chloromethylfluorescein diacetate)	L	488	492	517
C7025	CellTracker™ Green CFDA (5-chloromethylfluorescein diacetate) *special packaging*	L	488	492	517
New O34550	Oregon Green® 488 carboxylic acid diacetate, succinimidyl ester (carboxy-DFFDA, SE) *mixed isomers*	L	488	478	518
S22801	SNARF®-1 carboxylic acid, acetate, succinimidyl ester *special packaging*	L	488, 532	548, 576	587, 635
V12883	Vybrant® CFDA SE Cell Tracer Kit	L	488	492	517
V22888	Vybrant® CM-Dil cell-labeling solution	L	532	553	570
V22887	Vybrant® DiD cell-labeling solution	L	633	644	665
V22885	Vybrant® Dil cell-labeling solution	L	532	549	565
V22886	Vybrant® DiO cell-labeling solution	L	488	484	501
V22889	Vybrant® Multicolor Cell-Labeling Kit *DiO, Dil, DiD solutions, 1 mL each*	L	various	various	various

Viability

Cat #	Product Name	Cell Status	Flow Cytometer Laser Lines	Excitation Maxima	Emission Maxima
L7010	LIVE/DEAD® Cell-Mediated Cytotoxicity Kit *for animal cells* *2000 assays*	L	488	484 ^T , 535 ^D	501 ^T , 617 ^D
L7013	LIVE/DEAD® Reduced Biohazard Cell Viability Kit #1 *green and red fluorescence* *100 assays*	L	488	483 ^L , 535 ^D	505 ^L , 624 ^D
L23101	LIVE/DEAD® Reduced Biohazard Cell Viability Kit #2 *green fluorescence* *200 assays*	L	488	495	520
L23102	LIVE/DEAD® Reduced Biohazard Cell Viability Kit #3 *red fluorescence* *200 assays*	L	488	595	615
L23105	LIVE/DEAD® Reduced Biohazard Cell Viability Kit #4 *blue fluorescence* *200 assays*	L	UV	350	450
P3566	propidium iodide *1.0 mg/mL solution in water*	F	UV, 405, 488, 532	535	617
S7020	SYTOX® Green nucleic acid stain *5 mM solution in DMSO*	F	488	504	523

Vitality

Cat #	Product Name	Cell Status	Flow Cytometer Laser Lines	Excitation Maxima	Emission Maxima
B3051	2',7'-bis-(2-carboxyethyl)-5-(and-6)-carboxyfluorescein, acetoxymethyl ester (BCECF, AM) *1 mg/mL solution in dry DMSO*	L	488, 532	503	528
B1150	2',7'-bis-(2-carboxyethyl)-5-(and-6)-carboxyfluorescein, acetoxymethyl ester (BCECF, AM)	L	488, 532	503	528
B1170	2',7'-bis-(2-carboxyethyl)-5-(and-6)-carboxyfluorescein, acetoxymethyl ester (BCECF, AM) *special packaging*	L	488, 532	503	528
C3099	calcein, AM *1 mg/mL solution in dry DMSO*	L	488	494	517
C1430	calcein, AM	L	488	494	517
C3100MP	calcein, AM *special packaging*	L	488	494	517
C369	5-(and-6)-carboxy-2',7'-dichlorofluorescein diacetate (carboxy-DCFDA) *mixed isomers*	L	488	495	529
C195	5-(and-6)-carboxyfluorescein diacetate (5(6)-CFDA) *mixed isomers*	L	488	492	517

D = Dead. F = Fixed cells only. L = Live cells only. T = Target.

Vitality - Continued

Cat #	Product Name	Cell Status	Flow Cytometer Laser Lines	Excitation Maxima	Emission Maxima
C1354	5-carboxyfluorescein diacetate, acetoxymethyl ester (5-CFDA, AM)	L	488	492	518
C1271	5-(and-6)-carboxy SNARF [®] -1, acetoxymethyl ester, acetate	L	488	548, 576	587, 635
C1272	5-(and-6)-carboxy SNARF [®] -1, acetoxymethyl ester, acetate *special packaging*	L	488	548, 576	587, 635
New C34853	CellTrace [™] calcein blue, AM *special packaging*	L	UV, 405	360	440
New C34851	CellTrace [™] calcein red-orange, AM *special packaging*	L	488	576	589
New L34951	LIVE/DEAD [®] Cell Vitality Assay Kit *C ₁₂ resazurin/SYTOX [®] Green* *1000 assays*	L	488	563 ^M , 504 ^D	587 ^M , 523 ^D
L7011	LIVE/DEAD [®] Sperm Viability Kit *200-1000 assays*	L	488	487 ^L , 535 ^D	516 ^L , 617 ^D
L3224	LIVE/DEAD [®] Viability/Cytotoxicity Kit *for animal cells* *1000 assays*	L	488	494 ^L , 528 ^D	517 ^L , 617 ^D
O6151	Oregon Green [®] 488 carboxylic acid diacetate (carboxy-DFFDA) *6-isomer*	L	488	478	518
V23110	Vybrant [®] Cell Metabolic Assay Kit *with C ₁₂ -resazurin* *500-1000 assays*	L	488, 532	563	587

Zinc

Cat #	Product Name	Cell Status	Flow Cytometer Laser Lines	Excitation Maxima	Emission Maxima
F24195	FluoZin [™] -3, AM *cell permeant* *special packaging*	L	488	494	516
New R36351	RhodZin [™] -3, AM *cell permeant* *special packaging*	L	532	552	575

Cell Targets Selectively label organelles and vacuoles, and detect cellular oligosaccharides and glycoconjugates.

Carbohydrate / Glycosylation

Cat #	Product Name	Cell Status	Flow Cytometer Laser Lines	Excitation Maxima	Emission Maxima
C11254	concanavalin A, Alexa Fluor [®] 350 conjugate	L, F	UV	346	442
C11252	concanavalin A, Alexa Fluor [®] 488 conjugate	L, F	488	495	519
C11253	concanavalin A, Alexa Fluor [®] 594 conjugate	L, F	532	590	617
C21402	concanavalin A, Alexa Fluor [®] 633 conjugate	L, F	633	632	647
C21421	concanavalin A, Alexa Fluor [®] 647 conjugate	L, F	633	650	668
C21403	concanavalin A, Alexa Fluor [®] 660 conjugate	L, F	633	663	690
C21401	concanavalin A, succinylated, Alexa Fluor [®] 488 conjugate	L, F	488	495	519
I21411	isolectin GS-IB ₄ from <i>Griffonia simplicifolia</i> , Alexa Fluor [®] 488 conjugate	L, F	488	495	519
I21412	isolectin GS-IB ₄ from <i>Griffonia simplicifolia</i> , Alexa Fluor [®] 568 conjugate	L, F	532	579	603
I21413	isolectin GS-IB ₄ from <i>Griffonia simplicifolia</i> , Alexa Fluor [®] 594 conjugate	L, F	532	590	617
New I32450	isolectin GS-IB ₄ from <i>Griffonia simplicifolia</i> , Alexa Fluor [®] 647 conjugate	L, F	633	650	668
L21415	lectin GS-II from <i>Griffonia simplicifolia</i> , Alexa Fluor [®] 488 conjugate	L, F	488	495	519
L21416	lectin GS-II from <i>Griffonia simplicifolia</i> , Alexa Fluor [®] 594 conjugate	L, F	532	590	617
New L32451	lectin GS-II from <i>Griffonia simplicifolia</i> , Alexa Fluor [®] 647 conjugate	L, F	633	650	668
L11270	lectin PHA-L from <i>Phaseolus vulgaris</i> (red kidney bean), Alexa Fluor [®] 488 conjugate	L, F	488	495	519
New L32455	lectin PHA-L from <i>Phaseolus vulgaris</i> (red kidney bean), Alexa Fluor [®] 568 conjugate	L, F	532	579	603
New L32456	lectin PHA-L from <i>Phaseolus vulgaris</i> (red kidney bean), Alexa Fluor [®] 594 conjugate	L, F	532	590	617
New L32457	lectin PHA-L from <i>Phaseolus vulgaris</i> (red kidney bean), Alexa Fluor [®] 647 conjugate	L, F	633	650	668
L21409	lectin PNA from <i>Arachis hypogaea</i> (peanut), Alexa Fluor [®] 488 conjugate	L, F	488	495	519
New L32458	lectin PNA from <i>Arachis hypogaea</i> (peanut), Alexa Fluor [®] 568 conjugate	L, F	532	579	603
New L32459	lectin PNA from <i>Arachis hypogaea</i> (peanut), Alexa Fluor [®] 594 conjugate	L, F	532	590	617
New L32460	lectin PNA from <i>Arachis hypogaea</i> (peanut), Alexa Fluor [®] 647 conjugate	L, F	633	650	668
L11272	lectin SBA from <i>Glycine max</i> (soybean), Alexa Fluor [®] 488 conjugate	L, F	488	495	519
New L32461	lectin SBA from <i>Glycine max</i> (soybean), Alexa Fluor [®] 568 conjugate	L, F	532	579	603
New L32462	lectin SBA from <i>Glycine max</i> (soybean), Alexa Fluor [®] 594 conjugate	L, F	532	590	617
New L32463	lectin SBA from <i>Glycine max</i> (soybean), Alexa Fluor [®] 647 conjugate	L, F	633	650	668
W11263	wheat germ agglutinin, Alexa Fluor [®] 350 conjugate	L, F	UV	346	442
W11261	wheat germ agglutinin, Alexa Fluor [®] 488 conjugate	L, F	488	495	519
W11262	wheat germ agglutinin, Alexa Fluor [®] 594 conjugate	L, F	532	590	617
W21404	wheat germ agglutinin, Alexa Fluor [®] 633 conjugate	L, F	532	632	647
W21407	wheat germ agglutinin, Alexa Fluor [®] 660 conjugate	L, F	633	663	690
W11260	wheat germ agglutinin, Marina Blue [®] conjugate	L, F	UV	365	460
W849	wheat germ agglutinin, tetramethylrhodamine conjugate	L, F	532	555	580
W21405	wheat germ agglutinin, Texas Red [®] -X conjugate	L, F	488, 532, 633	595	615

Endoplasmic Reticulum

Cat #	Product Name	Cell Status	Flow Cytometer Laser Lines	Excitation Maxima	Emission Maxima
New S34200	SelectFX [™] Alexa Fluor [®] 488 Endoplasmic Reticulum Labeling Kit *for fixed cells*	F	488	495	519

D = Dead. F = Fixed cells only. L = Live cells only. M = Metabolically active.

Flow Cytometry Products

Golgi

Cat #	Product Name	Cell Status	Flow Cytometer Laser Lines	Excitation Maxima	Emission Maxima
A21270	anti-golgin-97 (human), mouse IgG ₁ , monoclonal CDF4 (anti-Golgi)	F	NA	NA	NA

Lipid

Cat #	Product Name	Cell Status	Flow Cytometer Laser Lines	Excitation Maxima	Emission Maxima
D3521	<i>N</i> -(4,4-difluoro-5,7-dimethyl-4-bora-3a,4a-diaza- <i>s</i> -indacene-3-pentanoyl)sphingosine (BODIPY® FL C ₂ -ceramide)	L, F	488	505	511
D3921	4,4-difluoro-1,3,5,7-tetramethyl-4-bora-3a,4a-diaza- <i>s</i> -indacene (BODIPY® 505/515)	L, F	488	502	510
New F35355	FM® 1-43FX *fixable analog of FM® 1-43 membrane stain*	L	488	479	598
N1142	nile red	L, F	488, 532	552	636
T3163	<i>N</i> -(3-triethylammoniumpropyl)-4-(4-(dibutylamino)styryl)pyridinium dibromide (FM® 1-43)	L	488	479	598
T13320	<i>N</i> -(3-triethylammoniumpropyl)-4-(6-(4-(diethylamino)phenyl)hexatrienyl)pyridinium dibromide (FM® 4-64) *special packaging*	L	488, 532	515	640

Mitochondria

Cat #	Product Name	Cell Status	Flow Cytometer Laser Lines	Excitation Maxima	Emission Maxima
A1372	acridine orange 10-nonyl bromide (nonyl acridine orange)	L	488	495	519
A6403	anti-OxPhos Complex IV subunit I, mouse IgG _{2a} , monoclonal 1D6 (anti-cytochrome oxidase subunit I) *human mitochondrial reactivity*	F	NA	NA	NA
A6404	anti-OxPhos Complex IV subunit II, mouse IgG _{2a} , monoclonal 12C4 (anti-cytochrome oxidase subunit II) *human mitochondrial reactivity*	F	NA	NA	NA
M22424	MitoFluor™ Red 589	L, F	532	588	622
M22426	MitoTracker® Deep Red 633 *special packaging*	L, F	633	640	665
M7514	MitoTracker® Green FM *special packaging*	L, F	488	490	516
M22425	MitoTracker® Red 580 *special packaging*	L, F	532	588	645

Nucleus

Cat #	Product Name	Cell Status	Flow Cytometer Laser Lines	Excitation Maxima	Emission Maxima
A3568	acridine orange *10 mg/mL solution in water*	L, F	488	500	526
A1310	7-aminoactinomycin D (7-AAD)	F	488, 532	546	647
D3571	4',6-diamidino-2-phenylindole, dilactate (DAPI, dilactate)	L	UV	358	461
E1169	ethidium homodimer-1 (EthD-1)	F	488, 532	528	617
E3599	ethidium homodimer-2 (EthD-2) *1 mM solution in DMSO*	F	488, 532	535	624
H7593	hexidium iodide	L, F	488, 532	518	600
H3569	Hoechst 33258, pentahydrate (bis-benzimide) *10 mg/mL solution in water*	L	UV	352	461
H3570	Hoechst 33342, trihydrochloride, trihydrate *10 mg/mL solution in water*	L	UV	350	461
H21486	Hoechst 34580	L	UV, 405	392	440
J11372	JOJO™-1 iodide (529/545) *1 mM solution in DMSO*	F	532	530	545
J11373	JO-PRO™-1 iodide (530/546) *1 mM solution in DMSO*	F	532	532	544
L7595	LDS 751	L	532	543	712
N7565	Nucleic Acid Stains Dimer Sampler Kit	F	various	various	various
P3580	POPO™-1 iodide (434/456) *1 mM solution in DMSO*	F	405	434	456
P3584	POPO™-3 iodide (534/570) *1 mM solution in DMF*	F	532	534	570
P3581	PO-PRO™-1 iodide (435/455) *1 mM solution in DMSO*	F	405	435	455
P3585	PO-PRO™-3 iodide (539/567) *1 mM solution in DMSO*	F	532	539	567
P3566	propidium iodide *1.0 mg/mL solution in water*	F	UV, 488, 532, 405	535	617
S11351	SYTO® 40 blue fluorescent nucleic acid stain *5 mM solution in DMSO*	L	405	419	445
S11352	SYTO® 41 blue fluorescent nucleic acid stain *5 mM solution in DMSO*	L	405	426	455
S11353	SYTO® 42 blue fluorescent nucleic acid stain *5 mM solution in DMSO*	L	405	430	460
S11350	SYTO® Blue Fluorescent Nucleic Acid Stain Sampler Kit *SYTO® dyes 40-45* *50 µL each*	L	405	various	various
S7573	SYTO® 11 green fluorescent nucleic acid stain *5 mM solution in DMSO*	L	488	508	527
S7574	SYTO® 12 green fluorescent nucleic acid stain *5 mM solution in DMSO*	L	488	500	522
S7575	SYTO® 13 green fluorescent nucleic acid stain *5 mM solution in DMSO*	L	488	488	509
S7576	SYTO® 14 green fluorescent nucleic acid stain *5 mM solution in DMSO*	L	488, 532	517	549
S7577	SYTO® 15 green fluorescent nucleic acid stain *5 mM solution in DMSO*	L	488, 532	516	546
S7578	SYTO® 16 green fluorescent nucleic acid stain *1 mM solution in DMSO*	L	488	488	518
S7556	SYTO® 21 green fluorescent nucleic acid stain *5 mM solution in DMSO*	L	488	494	517
S7557	SYTO® 22 green fluorescent nucleic acid stain *5 mM solution in DMSO*	L	488, 532	515	535

F = Fixed cells only. L = Live cells only. NA = Not applicable.

Nucleus - Continued

Cat #	Product Name	Cell Status	Flow Cytometer Laser Lines	Excitation Maxima	Emission Maxima
S7558	SYTO® 23 green fluorescent nucleic acid stain *5 mM solution in DMSO*	L	488	499	520
S7559	SYTO® 24 green fluorescent nucleic acid stain *5 mM solution in DMSO*	L	488	490	515
S7560	SYTO® 25 green fluorescent nucleic acid stain *5 mM solution in DMSO*	L	532	521	556
S7572	SYTO® Green Fluorescent Nucleic Acid Stain Sampler Kit #1 *SYTO® dyes 11-16* *50 µL each*	L	488	various	various
S7554	SYTO® Green Fluorescent Nucleic Acid Stain Sampler Kit #2 *SYTO® dyes 20-25* *50 µL each*	L	488, 532	various	various
S11361	SYTO® 80 orange fluorescent nucleic acid stain *5 mM solution in DMSO*	L	532	531	545
S11362	SYTO® 81 orange fluorescent nucleic acid stain *5 mM solution in DMSO*	L	532	530	544
S11363	SYTO® 82 orange fluorescent nucleic acid stain *5 mM solution in DMSO*	L	532	541	560
S11364	SYTO® 83 orange fluorescent nucleic acid stain *5 mM solution in DMSO*	L	532	543	559
S11360	SYTO® Orange Fluorescent Nucleic Acid Stain Sampler Kit *SYTO® dyes 80-85* *50 µL each*	L	532	various	various
S7579	SYTO® 17 red fluorescent nucleic acid stain *5 mM solution in DMSO*	L	633	621	634
S11341	SYTO® 59 red fluorescent nucleic acid stain *5 mM solution in DMSO*	L	633	622	645
S11343	SYTO® 61 red fluorescent nucleic acid stain *5 mM solution in DMSO*	L	633	620	647
S11340	SYTO® Red Fluorescent Nucleic Acid Stain Sampler Kit *SYTO® dyes 17 and 59-64* *50 µL each*	L	633	various	various
S11348	SYTOX® Blue nucleic acid stain *5 mM solution in DMSO*	F	405	445	470
S7020	SYTOX® Green nucleic acid stain *5 mM solution in DMSO*	F	488	504	523
S11368	SYTOX® Orange nucleic acid stain *5 mM solution in DMSO*	F	532	547	570
T3602	TO-PRO®-1 iodide (515/531) *1 mM solution in DMSO*	F	488, 532	515	531
T3605	TO-PRO®-3 iodide (642/661) *1 mM solution in DMSO*	F	633	462	661
T3600	TOTO®-1 iodide (514/533) *1 mM solution in DMSO*	F	488, 532	514	533
T3604	TOTO®-3 iodide (642/660) *1 mM solution in DMSO*	F	633	642	660
Y3603	YO-PRO®-1 iodide (491/509) *1 mM solution in DMSO*	F	488	491	509
Y3607	YO-PRO®-3 iodide (612/631) *1 mM solution in DMSO*	F	633	612	631
Y3601	YOYO®-1 iodide (491/509) *1 mM solution in DMSO*	F	488	491	509

Peroxisome

Cat #	Product Name	Cell Status	Flow Cytometer Laser Lines	Excitation Maxima	Emission Maxima
New S34201	SelectFX™ Alexa Fluor® 488 Peroxisome Labeling Kit *for fixed cells*	F	488	495	519

Secondary Detection & Labeling Label and visualize a vast array of cellular targets for imaging, flow cytometry, microarrays, and other applications.**Antibody Labeling†**

Cat #	Product Name	Cell Status	Flow Cytometer Laser Lines	Excitation Maxima	Emission Maxima
Z25000	Zenon™ Alexa Fluor® 350 Mouse IgG ₁ Labeling Kit *50 labelings*	NA	UV	346	442
New Z25300	Zenon™ Alexa Fluor® 350 Rabbit IgG Labeling Kit *50 labelings*	NA	UV	346	442
Z25013	Zenon™ Alexa Fluor® 405 Mouse IgG ₁ Labeling Kit *50 labelings*	NA	405	402	421
Z25313	Zenon™ Alexa Fluor® 405 Rabbit IgG Labeling Kit *50 labelings*	NA	405	402	421
Z25001	Zenon™ Alexa Fluor® 430 Mouse IgG ₁ Labeling Kit *50 labelings*	NA	405	434	539
New Z25301	Zenon™ Alexa Fluor® 430 Rabbit IgG Labeling Kit *50 labelings*	NA	405	434	539
Z25002	Zenon™ Alexa Fluor® 488 Mouse IgG ₁ Labeling Kit *50 labelings*	NA	488	495	519
New Z25302	Zenon™ Alexa Fluor® 488 Rabbit IgG Labeling Kit *50 labelings*	NA	488	495	519
Z25003	Zenon™ Alexa Fluor® 532 Mouse IgG ₁ Labeling Kit *50 labelings*	NA	532	531	554
New Z25303	Zenon™ Alexa Fluor® 532 Rabbit IgG Labeling Kit *50 labelings*	NA	532	531	554
Z25005	Zenon™ Alexa Fluor® 555 Mouse IgG ₁ Labeling Kit *50 labelings*	NA	532	555	565
New Z25305	Zenon™ Alexa Fluor® 555 Rabbit IgG Labeling Kit *50 labelings*	NA	532	555	565
Z25006	Zenon™ Alexa Fluor® 568 Mouse IgG ₁ Labeling Kit *50 labelings*	NA	532	578	603
New Z25306	Zenon™ Alexa Fluor® 568 Rabbit IgG Labeling Kit *50 labelings*	NA	532	578	603
Z25007	Zenon™ Alexa Fluor® 594 Mouse IgG ₁ Labeling Kit *50 labelings*	NA	532	590	617
New Z25307	Zenon™ Alexa Fluor® 594 Rabbit IgG Labeling Kit *50 labelings*	NA	532	590	617
Z25020	Zenon™ Alexa Fluor® 610-R-Phycoerythrin Mouse IgG ₁ Labeling Kit *10 labelings*	NA	488, 532	496, 546, 565	630
Z25008	Zenon™ Alexa Fluor® 647 Mouse IgG ₁ Labeling Kit *50 labelings*	NA	633	650	668
New Z25308	Zenon™ Alexa Fluor® 647 Rabbit IgG Labeling Kit *50 labelings*	NA	633	650	668
Z25021	Zenon™ Alexa Fluor® 647-R-Phycoerythrin Mouse IgG ₁ Labeling Kit *10 labelings*	NA	488, 532	496, 546, 565	668
Z25009	Zenon™ Alexa Fluor® 660 Mouse IgG ₁ Labeling Kit *50 labelings*	NA	633	663	690
New Z25309	Zenon™ Alexa Fluor® 660 Rabbit IgG Labeling Kit *50 labelings*	NA	633	663	690

† Also available in Mouse IgG_{2a} and IgG_{2b} labeling kits. Please visit www.probes.com/zenon. F = Fixed cells only. L = Live cells only. NA = Not applicable.

Flow Cytometry Products

Antibody Labeling - Continued

Cat #	Product Name	Cell Status	Flow Cytometer Laser Lines	Excitation Maxima	Emission Maxima
Z25010	Zenon™ Alexa Fluor® 680 Mouse IgG, Labeling Kit *50 labelings*	NA	633	679	702
New Z25310	Zenon™ Alexa Fluor® 680 Rabbit IgG Labeling Kit *50 labelings*	NA	633	679	702
Z25022	Zenon™ Alexa Fluor® 680-R-Phycoerythrin Mouse IgG, Labeling Kit *10 labelings*	NA	488, 532	496, 546, 565	702
Z25011	Zenon™ Alexa Fluor® 700 Mouse IgG, Labeling Kit *50 labelings*	NA	633	696	719
New Z25311	Zenon™ Alexa Fluor® 700 Rabbit IgG Labeling Kit *50 labelings*	NA	633	696	719
Z25030	Zenon™ Alexa Fluor® 700-Allophycocyanin Mouse IgG, Labeling Kit *10 labelings*	NA	633	650	723
New Z25312	Zenon™ Alexa Fluor® 750 Rabbit IgG Labeling Kit *50 labelings*	NA	633	752	779
Z25031	Zenon™ Alexa Fluor® 750-Allophycocyanin Mouse IgG, Labeling Kit *10 labelings*	NA	633	650	775
New Z25451	Zenon™ Allophycocyanin Human IgG Labeling Kit *25 labelings*	NA	633	650	660
Z25051	Zenon™ Allophycocyanin Mouse IgG, Labeling Kit *25 labelings*	NA	633	650	660
New Z25351	Zenon™ Allophycocyanin Rabbit IgG Labeling Kit *25 labelings*	NA	633	650	660
Z25054	Zenon™ Horseradish Peroxidase Mouse IgG, Labeling Kit *25 labelings*	NA	NA	NA	NA
New Z25354	Zenon™ Horseradish Peroxidase Rabbit IgG Labeling Kit *25 labelings*	NA	NA	NA	NA
Z25040	Zenon™ Marina Blue® Mouse IgG, Labeling Kit *50 labelings*	NA	UV	365	460
New Z25340	Zenon™ Marina Blue® Rabbit IgG Labeling Kit *50 labelings*	NA	UV	365	460
Z25041	Zenon™ Pacific Blue™ Mouse IgG, Labeling Kit *50 labelings*	NA	UV, 405	410	455
New Z25341	Zenon™ Pacific Blue™ Rabbit IgG Labeling Kit *50 labelings*	NA	UV, 405	410	455
New Z25455	Zenon™ R-Phycoerythrin Human IgG Labeling Kit *25 labelings*	NA	488, 532	496, 546, 565	578
Z25055	Zenon™ R-Phycoerythrin Mouse IgG, Labeling Kit *25 labelings*	NA	488, 532	496, 546, 565	578
New Z25355	Zenon™ R-Phycoerythrin Rabbit IgG Labeling Kit *25 labelings*	NA	488, 532	496, 546, 565	578
Z25045	Zenon™ Texas Red®-X Mouse IgG, Labeling Kit *50 labelings*	NA	532	595	615
New Z25345	Zenon™ Texas Red®-X Rabbit IgG Labeling Kit *50 labelings*	NA	532	595	615
New Z25080	Zenon™ Tricolor Mouse IgG, Labeling Kit #3 *for flow cytometry, 488 nm excitation* *3 × 10 labelings*	NA	488	496	519, 578, 668
New Z25380	Zenon™ Tricolor Rabbit IgG Labeling Kit #3 *for flow cytometry, 488 nm excitation* *3 × 10 labelings*	NA	488	496	519, 578, 668

Avidin/SA/Neutravidin Conjugates

Cat #	Product Name	Cell Status	Flow Cytometer Laser Lines	Excitation Maxima	Emission Maxima
A2660	avidin, NeutrAvidin™, R-phycoerythrin conjugate *1 mg/mL*	NA	488, 532	496, 546, 565	578
S21002	streptavidin, Alexa Fluor® 680-allophycocyanin conjugate (Alexa Fluor® 680-allophycocyanin streptavidin) *1 mg/mL*	NA	633	650	702
S21005	streptavidin, Alexa Fluor® 700-allophycocyanin conjugate (Alexa Fluor® 700-allophycocyanin streptavidin) *1 mg/mL*	NA	633	650	723
S21008	streptavidin, Alexa Fluor® 750-allophycocyanin conjugate (Alexa Fluor® 750-allophycocyanin streptavidin) *1 mg/mL*	NA	633	650	775
S11249	streptavidin, Alexa Fluor® 350 conjugate	NA	UV	346	442
New S32351	streptavidin, Alexa Fluor® 405 conjugate	NA	405	402	421
New S32354	streptavidin, Alexa Fluor® 488 conjugate *2 mg/mL*	NA	488	495	519
S11224	streptavidin, Alexa Fluor® 532 conjugate	NA	532	530	554
New S32355	streptavidin, Alexa Fluor® 555 conjugate *2 mg/mL*	NA	532	555	565
S11226	streptavidin, Alexa Fluor® 568 conjugate	NA	532	578	603
New S32356	streptavidin, Alexa Fluor® 594 conjugate *2 mg/mL*	NA	532	590	617
New S32364	streptavidin, Alexa Fluor® 635 conjugate	NA	633	633	647
New S32357	streptavidin, Alexa Fluor® 647 conjugate *2 mg/mL*	NA	633	650	668
S21378	streptavidin, Alexa Fluor® 680 conjugate	NA	633	679	702
S20982	streptavidin, Alexa Fluor® 610-R-phycoerythrin conjugate (Alexa Fluor® 610-R-phycoerythrin streptavidin) *1 mg/mL*	NA	488, 532	496, 546, 565	630
S20992	streptavidin, Alexa Fluor® 647-R-phycoerythrin conjugate (Alexa Fluor® 647-R-phycoerythrin streptavidin) *1 mg/mL*	NA	488, 532	496, 546, 565	668
S20985	streptavidin, Alexa Fluor® 680-R-phycoerythrin conjugate (Alexa Fluor® 680-R-phycoerythrin streptavidin) *1 mg/mL*	NA	633	496, 546, 565	702
New S32363	streptavidin, Alexa Fluor® 750-R-phycoerythrin conjugate (Alexa Fluor® 750-R-phycoerythrin streptavidin) *1 mg/mL*	NA	488, 532	496, 546, 565	771
New S32362	streptavidin, allophycocyanin conjugate *premium grade* *1 mg/mL*	NA	633	650	660
S868	streptavidin, allophycocyanin, crosslinked, conjugate *1 mg/mL*	NA	633	650	660
S11228	streptavidin, Cascade Yellow™ conjugate	NA	UV, 405	402	545
S32385	streptavidin, DyeMer™ 488/605 conjugate	NA	488	502	609
S32386	streptavidin, DyeMer™ 488/615 conjugate	NA	488	502	615
S32387	streptavidin, DyeMer™ 488/630 conjugate	NA	488	502	630
New S32350	streptavidin, B-phycoerythrin conjugate *1 mg/mL*	NA	532	546, 565	575

NA = Not applicable.

Avidin/SA/Neutravidin Conjugates - Continued

Cat #	Product Name	Cell Status	Flow Cytometer Laser Lines	Excitation Maxima	Emission Maxima
S866	streptavidin, R-phycoerythrin conjugate *1 mg/mL*	NA	488, 532	496, 546, 565	578
S21388	streptavidin, R-phycoerythrin conjugate *premium grade* *1 mg/mL*	NA	488, 532	496, 546, 565	578

Goat Anti-Mouse Antibody Conjugates[‡]

Cat #	Product Name	Cell Status	Flow Cytometer Laser Lines	Excitation Maxima	Emission Maxima
A21000	Alexa Fluor [®] 680–allophycocyanin goat anti-mouse IgG (H+L) *1 mg/mL*	NA	633	650	702
A21006	Alexa Fluor [®] 750–allophycocyanin goat anti-mouse IgG (H+L) *1 mg/mL*	NA	633	650	775
A11045	Alexa Fluor [®] 350 goat anti-mouse IgG (H+L) *2 mg/mL*	NA	UV	346	442
New A31553	Alexa Fluor [®] 405 goat anti-mouse IgG (H+L) *2 mg/mL*	NA	405	402	421
A11001	Alexa Fluor [®] 488 goat anti-mouse IgG (H+L) *2 mg/mL*	NA	488	495	519
A11002	Alexa Fluor [®] 532 goat anti-mouse IgG (H+L) *2 mg/mL*	NA	532	530	554
A21422	Alexa Fluor [®] 555 goat anti-mouse IgG (H+L) *2 mg/mL*	NA	532	555	565
A11004	Alexa Fluor [®] 568 goat anti-mouse IgG (H+L) *2 mg/mL*	NA	532	578	603
A11005	Alexa Fluor [®] 594 goat anti-mouse IgG (H+L) *2 mg/mL*	NA	532	590	617
New A31574	Alexa Fluor [®] 635 goat anti-mouse IgG (H+L) *2 mg/mL*	NA	633	633	647
A21235	Alexa Fluor [®] 647 goat anti-mouse IgG (H+L) *2 mg/mL*	NA	633	650	668
A20980	Alexa Fluor [®] 610–R-phycoerythrin goat anti-mouse IgG (H+L) *1 mg/mL*	NA	488, 532	496, 546, 565	630
A20990	Alexa Fluor [®] 647–R-phycoerythrin goat anti-mouse IgG (H+L) *1 mg/mL*	NA	488, 532	496, 546, 565	668
A20983	Alexa Fluor [®] 680–R-phycoerythrin goat anti-mouse IgG (H+L) *1 mg/mL*	NA	488, 532	496, 546, 565	702
A865	allophycocyanin, crosslinked, goat anti-mouse IgG (H+L) *1 mg/mL*	NA	633	650	660
New D31590	DyeMer [™] 488/605 goat anti-mouse IgG (H+L) *1 mg/mL*	NA	488	502	609
New D31591	DyeMer [™] 488/615 goat anti-mouse IgG (H+L) *1 mg/mL*	NA	488	502	615
New D31592	DyeMer [™] 488/630 goat anti-mouse IgG (H+L) *1 mg/mL*	NA	488	502	630
M10992	Marina Blue [®] goat anti-rabbit IgG (H+L) *2 mg/mL*	NA	UV	365	460
P10994	Pacific Blue [™] goat anti-rabbit IgG (H+L) *2 mg/mL*	NA	UV, 405	410	455
P21129	R-phycoerythrin goat anti-mouse IgG ₁ (γ1) conjugate *1 mg/mL*	NA	488, 532	496, 546, 565	578
P21139	R-phycoerythrin goat anti-mouse IgG _{2a} (γ2a) conjugate *1 mg/mL*	NA	488, 532	496, 546, 565	578
P21149	R-phycoerythrin goat anti-mouse IgG _{2b} (γ2b) conjugate *1 mg/mL*	NA	488, 532	496, 546, 565	578
P852	R-phycoerythrin goat anti-mouse IgG (H+L) *1 mg/mL*	NA	488, 532	496, 546, 565	578

Goat Anti-Rabbit Antibody Conjugates[‡]

Cat #	Product Name	Cell Status	Flow Cytometer Laser Lines	Excitation Maxima	Emission Maxima
A21001MP	Alexa Fluor [®] 680–allophycocyanin goat anti-rabbit IgG (H+L) *1 mg/mL*	NA	633	650	702
A11046	Alexa Fluor [®] 350 goat anti-rabbit IgG (H+L) *2 mg/mL*	NA	UV	346	442
A31556	Alexa Fluor [®] 405 goat anti-rabbit IgG (H+L) *2 mg/mL*	NA	405	402	421
A11008	Alexa Fluor [®] 488 goat anti-rabbit IgG (H+L) *2 mg/mL*	NA	488	495	519
A11009	Alexa Fluor [®] 532 goat anti-rabbit IgG (H+L) *2 mg/mL*	NA	532	530	554
A21428	Alexa Fluor [®] 555 goat anti-rabbit IgG (H+L) *2 mg/mL*	NA	532	555	565
A11011	Alexa Fluor [®] 568 goat anti-rabbit IgG (H+L) *2 mg/mL*	NA	532	578	603
A11012	Alexa Fluor [®] 594 goat anti-rabbit IgG (H+L) *2 mg/mL*	NA	532	590	617
New A31576	Alexa Fluor [®] 635 goat anti-rabbit IgG (H+L) *2 mg/mL*	NA	633	633	647
A21244	Alexa Fluor [®] 647 goat anti-rabbit IgG (H+L) *2 mg/mL*	NA	633	650	668
A20981	Alexa Fluor [®] 610–R-phycoerythrin goat anti-rabbit IgG (H+L) *1 mg/mL*	NA	488, 532	496, 546, 565	630
A20991	Alexa Fluor [®] 647–R-phycoerythrin goat anti-rabbit IgG (H+L) *1 mg/mL*	NA	488, 532	496, 546, 565	668
A20984	Alexa Fluor [®] 680–R-phycoerythrin goat anti-rabbit IgG (H+L) *1 mg/mL*	NA	488, 532	496, 546, 565	702
A10931	allophycocyanin, crosslinked, goat anti-rabbit IgG (H+L) *1 mg/mL*	NA	633	650	660
D31600	DyeMer [™] 488/605 goat anti-rabbit IgG (H+L) *1 mg/mL*	NA	488	502	609
D31601	DyeMer [™] 488/615 goat anti-rabbit IgG (H+L) *1 mg/mL*	NA	488	502	615
D31602	DyeMer [™] 488/630 goat anti-rabbit IgG (H+L) *1 mg/mL*	NA	488	502	630
M10992	Marina Blue [®] goat anti-rabbit IgG (H+L) *2 mg/mL*	NA	UV	365	460
P10994	Pacific Blue [™] goat anti-rabbit IgG (H+L) *2 mg/mL*	NA	UV, 405	410	455
P2771MP	R-phycoerythrin goat anti-rabbit IgG (H+L) *1 mg/mL*	NA	488, 532	496, 546, 565	578

Antibody Labeling Kits

Cat #	Product Name	Cell Status	Flow Cytometer Laser Lines	Excitation Maxima	Emission Maxima
A20180	Alexa Fluor [®] 350 Monoclonal Antibody Labeling Kit *5 labelings*	NA	UV	346	442
A20181	Alexa Fluor [®] 488 Monoclonal Antibody Labeling Kit *5 labelings*	NA	488	494	519
A20182	Alexa Fluor [®] 532 Monoclonal Antibody Labeling Kit *5 labelings*	NA	532	530	554
A20183	Alexa Fluor [®] 546 Monoclonal Antibody Labeling Kit *5 labelings*	NA	532	558	573

‡ Also available as F(ab)₂ fragments and highly cross-adsorbed antibody conjugates. Please visit www.probes.com for a complete product listing. § Also available as F(ab)₂ fragments and highly cross-adsorbed and isotype specific antibody conjugates. Please visit www.probes.com for a complete product listing. NA = Not applicable.

Flow Cytometry Products

Antibody Labeling Kits - Continued

Cat #	Product Name	Cell Status	Flow Cytometer Laser Lines	Excitation Maxima	Emission Maxima
A20187	Alexa Fluor® 555 Monoclonal Antibody Labeling Kit *5 labelings*	NA	532	555	565
A20185	Alexa Fluor® 594 Monoclonal Antibody Labeling Kit *5 labelings*	NA	532	590	617
A20186	Alexa Fluor® 647 Monoclonal Antibody Labeling Kit *5 labelings*	NA	633	650	668
A10170	Alexa Fluor® 350 Protein Labeling Kit *3 labelings*	NA	UV	346	442
A10171	Alexa Fluor® 430 Protein Labeling Kit *3 labelings*	NA	405	434	539
A10235	Alexa Fluor® 488 Protein Labeling Kit *3 labelings*	NA	488	495	519
A10236	Alexa Fluor® 532 Protein Labeling Kit *3 labelings*	NA	532	531	554
A10237	Alexa Fluor® 546 Protein Labeling Kit *3 labelings*	NA	532	556	573
A20174	Alexa Fluor® 555 Protein Labeling Kit *3 labelings*	NA	532	555	565
A10238	Alexa Fluor® 568 Protein Labeling Kit *3 labelings*	NA	532	589	603
A10239	Alexa Fluor® 594 Protein Labeling Kit *3 labelings*	NA	532	590	617
A20170	Alexa Fluor® 633 Protein Labeling Kit *3 labelings*	NA	633	632	647
A20173	Alexa Fluor® 647 Protein Labeling Kit *3 labelings*	NA	633	650	668
A20171	Alexa Fluor® 660 Protein Labeling Kit *3 labelings*	NA	633	663	690
A20172	Alexa Fluor® 680 Protein Labeling Kit *3 labelings*	NA	633	679	702

Signal Amplification

Cat #	Product Name	Cell Status	Flow Cytometer Laser Lines	Excitation Maxima	Emission Maxima
A11096	anti-fluorescein/Oregon Green®, goat IgG fraction, Alexa Fluor® 488 conjugate *1 mg/mL*	NA	488	495	519
A11090	anti-fluorescein/Oregon Green®, rabbit IgG fraction, Alexa Fluor® 488 conjugate *1 mg/mL*	NA	488	495	519
A11091	anti-fluorescein/Oregon Green®, rabbit IgG fraction, Alexa Fluor® 594 conjugate *1 mg/mL*	NA	532	590	617
A21250	anti-fluorescein/Oregon Green®, rabbit IgG fraction, R-phycoerythrin conjugate *2 mg/mL*	NA	488, 532	565	578
T20912	TSA™ Kit #2 *with HRP-goat anti-mouse IgG and Alexa Fluor® 488 tyramide* *50-150 slides*	NA	488	495	519
T20913	TSA™ Kit #3 *with HRP-goat anti-mouse IgG and Alexa Fluor® 546 tyramide* *50-150 slides*	NA	532	556	573
T20915	TSA™ Kit #5 *with HRP-goat anti-mouse IgG and Alexa Fluor® 594 tyramide* *50-150 slides*	NA	532	590	617
T20916	TSA™ Kit #6 *with HRP-goat anti-mouse IgG and Alexa Fluor® 647 tyramide* *50-150 slides*	NA	633	650	668
T20917	TSA™ Kit #7 *with HRP-goat anti-mouse IgG and Alexa Fluor® 350 tyramide* *50-150 slides*	NA	UV	346	442
T20920	TSA™ Kit #10 *with HRP-goat anti-mouse IgG and Pacific Blue® tyramide* *50-150 slides*	NA	UV, 405	410	455
T20922	TSA™ Kit #12 *with HRP-goat anti-rabbit IgG and Alexa Fluor® 488 tyramide* *50-150 slides*	NA	488	495	519
T20923	TSA™ Kit #13 *with HRP-goat anti-rabbit IgG and Alexa Fluor® 546 tyramide* *50-150 slides*	NA	532	556	573
T20925	TSA™ Kit #15 *with HRP-goat anti-rabbit IgG and Alexa Fluor® 594 tyramide* *50-150 slides*	NA	488	590	617
T20926	TSA™ Kit #16 *with HRP-goat anti-rabbit IgG and Alexa Fluor® 647 tyramide* *50-150 slides*	NA	633	650	668
T20927	TSA™ Kit #17 *with HRP-goat anti-rabbit IgG and Alexa Fluor® 350 tyramide* *50-150 slides*	NA	UV	346	442
T20930	TSA™ Kit #20 *with HRP-goat anti-rabbit IgG and Pacific Blue® tyramide* *50-150 slides*	NA	UV, 405	410	455
T20932	TSA™ Kit #22 *with HRP-streptavidin and Alexa Fluor® 488 tyramide* *50-150 slides*	NA	488	495	519
T20935	TSA™ Kit #25 *with HRP-streptavidin and Alexa Fluor® 594 tyramide* *50-150 slides*	NA	532	590	617
T20936	TSA™ Kit #26 *with HRP-streptavidin and Alexa Fluor® 647 tyramide* *50-150 slides*	NA	633	650	668
T20937	TSA™ Kit #27 *with HRP-streptavidin and Alexa Fluor® 350 tyramide* *50-150 slides*	NA	UV	346	442
T20940	TSA™ Kit #30 *with HRP-streptavidin and Pacific Blue® tyramide* *50-150 slides*	NA	UV, 405	410	455
New T30950	TSA™ Kit #37 *with HRP-goat anti-mouse IgG and Alexa Fluor® 405 tyramide* *50-150 slides*	NA	405	402	421
New T30951	TSA™ Kit #38 *with HRP-goat anti-rabbit IgG and Alexa Fluor® 405 tyramide* *50-150 slides*	NA	405	402	421

NA = Not applicable.

Signal Amplification - Continued

Cat #	Product Name	Cell Status	Flow Cytometer Laser Lines	Excitation Maxima	Emission Maxima
New T30952	TSA™ Kit #39 *with HRP–streptavidin and Alexa Fluor® 405 tyramide* *50-150 slides*	NA	405	402	421
New T30953	TSA™ Kit #40 *with HRP–goat anti-mouse IgG and Alexa Fluor® 555 tyramide* *50-150 slides*	NA	532	550	565
New T30954	TSA™ Kit #41 *with HRP–goat anti-rabbit IgG and Alexa Fluor® 555 tyramide* *50-150 slides*	NA	532	555	565
New T30955	TSA™ Kit #42 *with HRP–streptavidin and Alexa Fluor® 555 tyramide* *50-150 slides*	NA	532	555	565

Standards Optimize instrument performance and evaluate accuracy and reliability.**Alignment**

Cat #	Product Name	Cell Status	Flow Cytometer Laser Lines	Excitation Maxima	Emission Maxima
A7304	AlignFlow™ flow cytometry alignment beads, 2.5 µm *for UV excitation*	NA	UV	350–370	400–470
A7302	AlignFlow™ flow cytometry alignment beads, 2.5 µm *for 488 nm excitation*	NA	488	488	515–660
A14835	AlignFlow™ flow cytometry alignment beads, 2.5 µm *for 630-660 nm excitation*	NA	633	630–660	670–720
A7312	AlignFlow™ flow cytometry alignment beads, 2.5 µm *for 633 nm excitation*	NA	633	633	645–680
A7305	AlignFlow™ Plus flow cytometry alignment beads, 6 µm *for UV excitation*	NA	UV	350–370	400–470
A7303	AlignFlow™ Plus flow cytometry alignment beads, 6 µm *for 488 nm excitation*	NA	488	488	515–660
A14836	AlignFlow™ Plus flow cytometry alignment beads, 6 µm *for 630-660 nm excitation*	NA	633	630–660	670–720
A7313	AlignFlow™ Plus flow cytometry alignment beads, 6 µm *for 633 nm excitation*	NA	633	633	645–680

Cell Sorter Setup

Cat #	Product Name	Cell Status	Flow Cytometer Laser Lines	Excitation Maxima	Emission Maxima
P14825	PeakFlow™ Blue flow cytometry reference beads, 2.5 µm *460 nm emission*	NA	UV, 405	400	460
P14826	PeakFlow™ Blue flow cytometry reference beads, 6 µm *460 nm emission*	NA	UV, 405	400	460
P14831	PeakFlow™ Carmine flow cytometry reference beads, 2.5 µm *620 nm emission*	NA	488, 532	580	620
P14832	PeakFlow™ Carmine flow cytometry reference beads, 6 µm *620 nm emission*	NA	488, 532	580	620
P24670	PeakFlow™ Claret flow cytometry reference beads, 6 µm *680 nm emission*	NA	633	645	680
P14827	PeakFlow™ Green flow cytometry reference beads, 2.5 µm *515 nm emission*	NA	488	505	515
P14828	PeakFlow™ Green flow cytometry reference beads, 6 µm *515 nm emission*	NA	488	505	515
P24672	PeakFlow™ Infrared flow cytometry reference beads, 6 µm *770 nm emission*	NA	633	735	770
P14829	PeakFlow™ Orange flow cytometry reference beads, 2.5 µm *575 nm emission*	NA	488, 532	570	575
P14830	PeakFlow™ Orange flow cytometry reference beads, 6 µm *575 nm emission*	NA	488, 532	570	575
P24671	PeakFlow™ Ultra Red flow cytometry reference beads, 6 µm *695 nm emission*	NA	633	665	695

Compensation

Cat #	Product Name	Cell Status	Flow Cytometer Laser Lines	Excitation Maxima	Emission Maxima
C14820	CompenFlow™ Flow Cytometry Compensation Kit, 2.5 µm	NA	488	488	BP530 & BP585
C7301	CompenFlow™ Flow Cytometry Compensation Kit, 6 µm	NA	488	488	BP530 & BP585

Intensity Calibration

Cat #	Product Name	Cell Status	Flow Cytometer Laser Lines	Excitation Maxima	Emission Maxima
L14812	LinearFlow™ Blue Flow Cytometry Intensity Calibration Kit, 2.5 µm *for UV excitation/430 nm emission*	NA	UV	365	430
L14813	LinearFlow™ Blue Flow Cytometry Intensity Calibration Kit, 6 µm *for UV excitation/430 nm emission*	NA	UV	365	430
L14816	LinearFlow™ Carmine Flow Cytometry Intensity Calibration Kit, 2.5 µm *for 488 nm excitation/620 nm emission*	NA	488, 532	580	620
L14817	LinearFlow™ Carmine Flow Cytometry Intensity Calibration Kit, 6 µm *for 488 nm excitation/620 nm emission*	NA	488, 532	580	620
L14818	LinearFlow™ Deep Red Flow Cytometry Intensity Calibration Kit, 2.5 µm *for 633 nm excitation/660 nm emission*	NA	633	633	660
L14819	LinearFlow™ Deep Red Flow Cytometry Intensity Calibration Kit, 6 µm *for 633 nm excitation/660 nm emission*	NA	633	633	660
L14821	LinearFlow™ Green Flow Cytometry Intensity Calibration Kit, 2.5 µm *for 488 nm excitation/515 nm emission*	NA	488	488	515
L14822	LinearFlow™ Green Flow Cytometry Intensity Calibration Kit, 6 µm *for 488 nm excitation/515 nm emission*	NA	488	488	515
L14823	LinearFlow™ Green Flow Cytometry Low Intensity Calibration Kit, 2.5 µm *for 488 nm excitation/515 nm emission*	NA	488	488	515

NA = Not applicable

Flow Cytometry Products

Intensity Calibration - Continued

Cat #	Product Name	Cell Status	Flow Cytometer Laser Lines	Excitation Maxima	Emission Maxima
L14824	LinearFlow™ Green Flow Cytometry Low Intensity Calibration Kit, 6 µm *for 488 nm excitation/515 nm emission*	NA	488	488	515
L14814	LinearFlow™ Orange Flow Cytometry Intensity Calibration Kit, 2.5 µm *for 488 nm excitation/575 nm emission*	NA	488, 532	570	575
L14815	LinearFlow™ Orange Flow Cytometry Intensity Calibration Kit, 6 µm *for 488 nm excitation/575 nm emission*	NA	488, 532	570	575

Size Standards

Cat #	Product Name	Cell Status	Flow Cytometer Laser Lines	Excitation Maxima	Emission Maxima
F13838	Flow Cytometry Size Calibration Kit *nonfluorescent microspheres*	NA	NA	NA	NA

Microbiology

Function Assay key metabolic processes and monitor bacterial/yeast growth, proliferation, and viability.

Enzyme Activity / Detection

Cat #	Product Name	Cell Status	Flow Cytometer Laser Lines	Excitation Maxima	Emission Maxima
A22010	5-acetylaminofluorescein di-β-D-galactopyranoside (C ₂ FDG)	L	488	494	518
New B35000	BacLight™ Green bacterial stain *special packaging*	L	488	480	516
New B35001	BacLight™ Red bacterial stain *special packaging*	L	488, 532	581	644
D6488	9H-(1,3-dichloro-9,9-dimethylacridin-2-one-7-yl) β-D-galactopyranoside (DDAO galactoside)	L	633	646	659
D6487	9H-(1,3-dichloro-9,9-dimethylacridin-2-one-7-yl) phosphate, diammonium salt (DDAO phosphate)	L	633	646	659
D11951	6,8-difluoro-4-methylumbelliferyl β-D-glucuronide, lithium salt (DiFMUGlcU)	L	UV	358	452
D6567	6,8-difluoro-4-methylumbelliferyl phosphate (DiFMUP)	L	UV	358	452
F1930	FluoReporter® lacZ Flow Cytometry Kit *50 assays*	L	488	494	514
F1931	FluoReporter® lacZ Flow Cytometry Kit *250 assays*	L	488	494	514
F2905	FluoReporter® lacZ/Galactosidase Quantitation Kit *1000 assays*	L	UV	386	448
F1179	fluorescein di-β-D-galactopyranoside (FDG)	L	488	494	514
F2881	fluorescein di-β-D-glucopyranoside (FDGlu)	L	488	494	514
F2915	fluorescein di-β-D-glucuronide (FDGlcU)	L	488	494	514
F2999	fluorescein diphosphate, tetraammonium salt (FDP)	L	488	494	514
I2908	ImaGene Green™ C ₁₂ FDGlcU GUS Gene Expression Kit	L	488	494	514
N13195	2-(N-(7-nitrobenz-2-oxa-1,3-diazol-4-yl)amino)-2-deoxyglucose (2-NBDG)	L	488	466	540
N23106	6-(N-(7-nitrobenz-2-oxa-1,3-diazol-4-yl)amino)-6-deoxyglucose (6-NBDG)	L	488	475	552
O2892	5-octanoylaminofluorescein di-β-D-galactopyranoside (C ₈ FDG)	L	488	494	518
R1159	resorufin β-D-galactopyranoside	L	488, 532	563	587
T658	β-trifluoromethylumbelliferyl β-D-glucuronide	L	UV, 405	385	502

Membrane Potential

Cat #	Product Name	Cell Status	Flow Cytometer Laser Lines	Excitation Maxima	Emission Maxima
D273	3,3'-dihexyloxycarbocyanine iodide (DiOC ₆ (3))	L	488	484	501
R302	rhodamine 123	L	488, 532	507	529
R648MP	rhodamine B, hexyl ester, perchlorate (R 6)	L	532	556	578

Mitochondria

Cat #	Product Name	Cell Status	Flow Cytometer Laser Lines	Excitation Maxima	Emission Maxima
S7529	SYTO® 18 yeast mitochondrial stain *5 mM solution in DMSO*	L, F	488	468	533
Y7530	Yeast Mitochondrial Stain Sampler Kit	L, F	various	various	various

F = Fixed cells only. L = Live cells only. NA = Not applicable.

pH

Cat #	Product Name	Cell Status	Flow Cytometer Laser Lines	Excitation Maxima	Emission Maxima
B1150	2',7'-bis-(2-carboxyethyl)-5-(and-6)-carboxyfluorescein, acetoxymethyl ester (BCECF, AM)	L	488	482	520
B1170	2',7'-bis-(2-carboxyethyl)-5-(and-6)-carboxyfluorescein, acetoxymethyl ester (BCECF, AM) *special packaging*	L	488	482	520
B3051	2',7'-bis-(2-carboxyethyl)-5-(and-6)-carboxyfluorescein, acetoxymethyl ester (BCECF, AM) *1 mg/mL solution in dry DMSO*	L	488	482	520
C1271	5-(and-6)-carboxy SNARF [®] -1, acetoxymethyl ester, acetate	L	488, 532	548, 576	587, 635
C1272	5-(and-6)-carboxy SNARF [®] -1, acetoxymethyl ester, acetate *special packaging*	L	488, 532	548, 576	587, 635

Proliferation

Cat #	Product Name	Cell Status	Flow Cytometer Laser Lines	Excitation Maxima	Emission Maxima
A21303	anti-bromodeoxyuridine, mouse IgG ₁ , monoclonal PRB-1, Alexa Fluor [®] 488 conjugate (anti-BrdU, Alexa Fluor [®] 488 conjugate)	F	488	495	519
A21307	anti-bromodeoxyuridine, mouse IgG ₁ , monoclonal PRB-1, Alexa Fluor [®] 532 conjugate (anti-BrdU, Alexa Fluor [®] 532 conjugate)	F	532	531	554
A21308	anti-bromodeoxyuridine, mouse IgG ₁ , monoclonal PRB-1, Alexa Fluor [®] 546 conjugate (anti-BrdU, Alexa Fluor [®] 546 conjugate)	F	532	556	573
A21304	anti-bromodeoxyuridine, mouse IgG ₁ , monoclonal PRB-1, Alexa Fluor [®] 594 conjugate (anti-BrdU, Alexa Fluor [®] 594 conjugate)	F	532	590	617
A21305	anti-bromodeoxyuridine, mouse IgG ₁ , monoclonal PRB-1, Alexa Fluor [®] 594 conjugate (anti-BrdU, Alexa Fluor [®] 594 conjugate)	F	633	650	668
A21306	anti-bromodeoxyuridine, mouse IgG ₁ , monoclonal PRB-1, Alexa Fluor [®] 660 conjugate (anti-BrdU, Alexa Fluor [®] 660 conjugate)	F	633	663	690

Reactive Nitrogen Species

Cat #	Product Name	Cell Status	Flow Cytometer Laser Lines	Excitation Maxima	Emission Maxima
D23842	DAF-FM diacetate (4-amino-5-methylamino-2',7'-difluorofluorescein diacetate)	L	488	495	515
D23844	DAF-FM diacetate (4-amino-5-methylamino-2',7'-difluorofluorescein diacetate) *special packaging*	L	488	495	515

Reactive Oxygen Species

Cat #	Product Name	Cell Status	Flow Cytometer Laser Lines	Excitation Maxima	Emission Maxima
D1168	dihydroethidium (hydroethidine)	L	488, 532	518	605
D23107	dihydroethidium (hydroethidine) *5 mM stabilized solution in DMSO*	L	488, 532	518	605
D11347	dihydroethidium (hydroethidine) *special packaging*	L	488, 532	518	605
D632	dihydrorhodamine 123	L	488	507	529
D23806	dihydrorhodamine 123 *5 mM stabilized solution in DMSO*	L	488	507	529

Tracing / Tracking

Cat #	Product Name	Cell Status	Flow Cytometer Laser Lines	Excitation Maxima	Emission Maxima
C1165	5-(and-6)-carboxy-2',7'-dichlorofluorescein diacetate, succinimidyl ester *mixed isomers*	L	488	495	529
C2925	CellTracker [™] Green CMFDA (5-chloromethylfluorescein diacetate)	L	488	494	514
C7025	CellTracker [™] Green CMFDA (5-chloromethylfluorescein diacetate) *special packaging*	L	488	494	514
D3521	N-(4,4-difluoro-5,7-dimethyl-4-bora-3a,4a-diaza-s-indacene-3-pentanoyl)sphingosine (BODIPY [®] FL C ₅ -ceramide)	L	488	505	511 & 620
V12883	Vybrant [®] CFDA SE Cell Tracer Kit	L	488	494	514
V22888	Vybrant [®] CM-Dil cell-labeling solution	L	532	553	570
V22887	Vybrant [®] DiD cell-labeling solution	L	633	644	665
V22885	Vybrant [®] Dil cell-labeling solution	L	532	549	565
V22886	Vybrant [®] DiO cell-labeling solution	L	488	484	501
V22889	Vybrant [®] Multicolor Cell-Labeling Kit *DiO, Dil, DiD solutions, 1 mL each*	L	various	various	various

F = Fixed cells only. L = Live cells only.

Flow Cytometry Products

Viability

Cat #	Product Name	Cell Status	Flow Cytometer Laser Lines	Excitation Maxima	Emission Maxima
B7277	Bacteria Counting Kit *for flow cytometry*	L	488	485	500
New L34856	LIVE/DEAD® BacLight™ Bacterial Viability and Counting Kit *for flow cytometry* *100 assays*	L	488	480 ^L , 490 ^D	500 ^L , 635 ^D
L7012	LIVE/DEAD® BacLight™ Bacterial Viability Kit *for microscopy and quantitative assays* *1000 assays*	L	488	480 ^L , 490 ^D	500 ^L , 635 ^D
V7023	ViaGram™ Red+ Bacterial Gram Stain and Viability Kit *200 assays*	L	UV, 488, 532	358 ^L , 504 ^D , 595 ^G	461 ^L , 523 ^D , 615 ^G

Vitality

Cat #	Product Name	Cell Status	Flow Cytometer Laser Lines	Excitation Maxima	Emission Maxima
New B34950	BacLight™ Bacterial Membrane Potential Kit *for flow cytometry* *100 assays*	L	488	482	497, 615
B438	bis-(1,3-dibutylbarbituric acid)trimethine oxonol (DiBAC ₄ (3))	L	488	493	516
C1430	calcein, AM	L	488	494	517
C3099	calcein, AM *1 mg/mL solution in dry DMSO*	L	488	494	517
C3100MP	calcein, AM *special packaging*	L	488	494	517
D14730	3,3'-diethyloxycarbocyanine iodide (DiOC ₂ (3))	L	488	482	497
D378	3,3'-diheptyloxycarbocyanine iodide (DiOC ₇ (3))	L	488	482	504

Targets Examine subcellular structure in bacteria and yeast.

Antibiotic

Cat #	Product Name	Cell Status	Flow Cytometer Laser Lines	Excitation Maxima	Emission Maxima
B13234	BOCILLIN™ 650/665 penicillin, sodium salt	L	633	646	659
B13233	BOCILLIN™ FL penicillin, sodium salt	L	488	504	511
P13235	polymyxin B, BODIPY® FL conjugate, trifluoroacetic acid salt *mixed species*	L	488	505	513
P13238	polymyxin B, dansyl conjugate, trifluoroacetic acid salt *mixed species*	L	UV	339	524
P13236	polymyxin B, Oregon Green® 514 conjugate, trifluoroacetic acid salt *mixed species*	L	488	496	524
P13237	polymyxin B, Texas Red®-X conjugate, trifluoroacetic acid salt *mixed species*	L	488, 532, 633	595	615
New V34850	vancomycin, BODIPY® FL conjugate (BODIPY® FL vancomycin)	L	488	504	511

Carbohydrate / Glycosylation

Cat #	Product Name	Cell Status	Flow Cytometer Laser Lines	Excitation Maxima	Emission Maxima
C11254	concanavalin A, Alexa Fluor® 350 conjugate	L, F	UV	346	442
C11252	concanavalin A, Alexa Fluor® 488 conjugate	L, F	488	495	519
C11253	concanavalin A, Alexa Fluor® 594 conjugate	L, F	532	590	617
C21402	concanavalin A, Alexa Fluor® 633 conjugate	L, F	633	632	647
C21421	concanavalin A, Alexa Fluor® 647 conjugate	L, F	633	650	668
C21403	concanavalin A, Alexa Fluor® 660 conjugate	L, F	633	663	690
C21401	concanavalin A, succinylated, Alexa Fluor® 488 conjugate	L, F	488	495	519
I21411	isolectin GS-IB ₄ from <i>Griffonia simplicifolia</i> , Alexa Fluor® 488 conjugate	L, F	488	495	519
I21412	isolectin GS-IB ₄ from <i>Griffonia simplicifolia</i> , Alexa Fluor® 568 conjugate	L, F	532	578	603
I21413	isolectin GS-IB ₄ from <i>Griffonia simplicifolia</i> , Alexa Fluor® 594 conjugate	L, F	532	590	617
New I32450	isolectin GS-IB ₄ from <i>Griffonia simplicifolia</i> , Alexa Fluor® 647 conjugate	L, F	633	650	668
L21415	lectin GS-II from <i>Griffonia simplicifolia</i> , Alexa Fluor® 488 conjugate	L, F	488	495	519
L21416	lectin GS-II from <i>Griffonia simplicifolia</i> , Alexa Fluor® 594 conjugate	L, F	532	590	617
New L32451	lectin GS-II from <i>Griffonia simplicifolia</i> , Alexa Fluor® 647 conjugate	L, F	633	650	668
L11270	lectin PHA-L from <i>Phaseolus vulgaris</i> (red kidney bean), Alexa Fluor® 488 conjugate	L, F	488	495	519
New L32455	lectin PHA-L from <i>Phaseolus vulgaris</i> (red kidney bean), Alexa Fluor® 568 conjugate	L, F	532	578	603
New L32456	lectin PHA-L from <i>Phaseolus vulgaris</i> (red kidney bean), Alexa Fluor® 594 conjugate	L, F	532	590	617
New L32457	lectin PHA-L from <i>Phaseolus vulgaris</i> (red kidney bean), Alexa Fluor® 647 conjugate	L, F	633	650	668
L21409	lectin PNA from <i>Arachis hypogaea</i> (peanut), Alexa Fluor® 488 conjugate	L, F	488	495	519
New L32458	lectin PNA from <i>Arachis hypogaea</i> (peanut), Alexa Fluor® 568 conjugate	L, F	532	578	603
New L32459	lectin PNA from <i>Arachis hypogaea</i> (peanut), Alexa Fluor® 594 conjugate	L, F	532	590	617
New L32460	lectin PNA from <i>Arachis hypogaea</i> (peanut), Alexa Fluor® 647 conjugate	L, F	633	650	668
L11272	lectin SBA from <i>Glycine max</i> (soybean), Alexa Fluor® 488 conjugate	L, F	488	495	519

D = Dead. F = Fixed cells only. G = Gram-positive. L = Live cells only.

Carbohydrate / Glycosylation - Continued

Cat #	Product Name	Cell Status	Flow Cytometer Laser Lines	Excitation Maxima	Emission Maxima
New L32461	lectin SBA from <i>Glycine max</i> (soybean), Alexa Fluor® 568 conjugate	L, F	532	578	603
New L32462	lectin SBA from <i>Glycine max</i> (soybean), Alexa Fluor® 594 conjugate	L, F	532	590	617
New L32463	lectin SBA from <i>Glycine max</i> (soybean), Alexa Fluor® 647 conjugate	L, F	633	650	668
W11263	wheat germ agglutinin, Alexa Fluor® 350 conjugate	L, F	UV	346	442
W11261	wheat germ agglutinin, Alexa Fluor® 488 conjugate	L, F	488	495	519
W11262	wheat germ agglutinin, Alexa Fluor® 594 conjugate	L, F	532	590	617
W21404	wheat germ agglutinin, Alexa Fluor® 633 conjugate	L, F	633	632	647
W21407	wheat germ agglutinin, Alexa Fluor® 660 conjugate	L, F	633	663	690
W11260	wheat germ agglutinin, Marina Blue® conjugate	L, F	UV	365	460
W849	wheat germ agglutinin, tetramethylrhodamine conjugate	L, F	532	555	580
W21405	wheat germ agglutinin, Texas Red®-X conjugate	L, F	488, 532	595	615

Glutathione

Cat #	Product Name	Cell Status	Flow Cytometer Laser Lines	Excitation Maxima	Emission Maxima
M1378	monobromobimane (mBBr)	L	UV, 405	394	490
M20381	monobromobimane (mBBr) *FluoroPure™ grade*	L	UV, 405	394	490

Lipid

Cat #	Product Name	Cell Status	Flow Cytometer Laser Lines	Excitation Maxima	Emission Maxima
New F35355	FM® 1-43FX *fixable analog of FM® 1-43 membrane stain*	L	488	479	598
N1142	nile red	L, F	488, 532	552	636
T3163	<i>N</i> -(3-triethylammoniumpropyl)-4-(4-(dibutylamino)styryl)pyridinium dibromide (FM® 1-43)	L	488	479	598
T3166	<i>N</i> -(3-triethylammoniumpropyl)-4-(6-(4-(diethylamino)phenyl)hexatrienyl)pyridinium dibromide (FM® 4-64)	L	488, 532	515	640
T13320	<i>N</i> -(3-triethylammoniumpropyl)-4-(6-(4-(diethylamino)phenyl)hexatrienyl)pyridinium dibromide (FM® 4-64) *special packaging*	L	488, 532	515	640

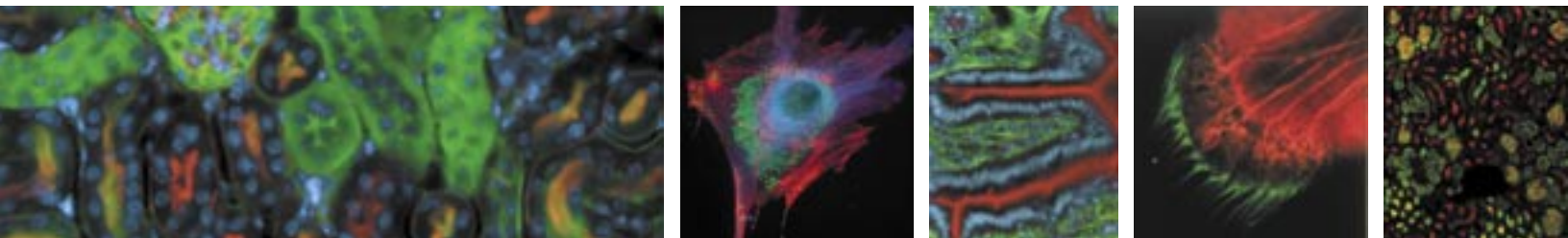
Nucleic Acids

Cat #	Product Name	Cell Status	Flow Cytometer Laser Lines	Excitation Maxima	Emission Maxima
A3568	acridine orange *10 mg/mL solution in water*	L	488	500	526
A1310	7-aminoactinomycin D (7-AAD)	F	488, 532	546	647
D1306	4',6-diamidino-2-phenylindole, dihydrochloride (DAPI)	L	UV, 405	358	461
E1169	ethidium homodimer-1 (EthD-1)	F	488, 532	528	617
E3599	ethidium homodimer-2 (EthD-2) *1 mM solution in DMSO*	F	488, 532	535	624
H7593	hexidium iodide	L	488, 532	518	600
H3569	Hoechst 33258, pentahydrate (bis-benzimide) *10 mg/mL solution in water*	L	UV, 405	352	461
H3570	Hoechst 33342, trihydrochloride, trihydrate *10 mg/mL solution in water*	L	UV, 405	350	461
H21486	Hoechst 34580	L	UV, 405	392	440
P3566	propidium iodide *1.0 mg/mL solution in water*	F	UV, 405	399	519
S7573	SYTO® 11 green fluorescent nucleic acid stain *5 mM solution in DMSO*	L	488	508	527
S7575	SYTO® 13 green fluorescent nucleic acid stain *5 mM solution in DMSO*	L	488	488	509
S7578	SYTO® 16 green fluorescent nucleic acid stain *1 mM solution in DMSO*	L	488	488	518
New S34854	SYTO® 9 green fluorescent nucleic acid stain *5 mM solution in DMSO*	L	488	485	498
New S34855	SYTO® BC green fluorescent nucleic acid stain *5 mM solution in DMSO*	L	488	485	500
S7020	SYTOX® Green nucleic acid stain *5 mM solution in DMSO*	F	488	504	523
T3602	TO-PRO®-1 iodide (515/531) *1 mM solution in DMSO*	F	488, 532	515	531
T3605	TO-PRO®-3 iodide (642/661) *1 mM solution in DMSO*	F	633	642	661
T3600	TOTO®-1 iodide (514/533) *1 mM solution in DMSO*	F	488, 532	514	533
Y3601	YOYO®-1 iodide (491/509) *1 mM solution in DMSO*	F	488	491	509

Vacuole

Cat #	Product Name	Cell Status	Flow Cytometer Laser Lines	Excitation Maxima	Emission Maxima
Y7536	yeast vacuole membrane marker MDY-64	L	405, 488	456	505

F = Fixed cells only. L = Live cells only.



Flow Cytometry Products

Yeast Organelle

Cat #	Product Name	Cell Status	Flow Cytometer Laser Lines	Excitation Maxima	Emission Maxima
A6458	anti-alkaline phosphatase (yeast vacuolar), mouse IgG ₁ , monoclonal 1D3 *in conditioned culture medium*	F	NA	NA	NA
A6428	anti-carboxypeptidase Y (yeast vacuolar), mouse IgG ₁ , monoclonal 10A5 (anti-CPY)	F	NA	NA	NA
A6429	anti-dolichol phosphate mannosyl synthase (yeast), mouse IgG ₁ , monoclonal 5C5	F	NA	NA	NA
A6422	anti-H ⁺ -ATPase 69 kDa subunit (yeast vacuolar), mouse IgG _{2a} , monoclonal 8B1	F	NA	NA	NA
A6426	anti-H ⁺ -ATPase 100 kDa subunit (yeast vacuolar), mouse IgG _{2a} , monoclonal 10D7	F	NA	NA	NA
A6427	anti-H ⁺ -ATPase 60 kDa subunit (yeast vacuolar), mouse IgG ₁ , monoclonal 13D11	F	NA	NA	NA
A6405	anti-OxPhos Complex IV subunit I (yeast), mouse IgG _{2b} , monoclonal 11D8 (anti-cytochrome oxidase subunit I (yeast))	F	NA	NA	NA
A6407	anti-OxPhos Complex IV subunit II (yeast), mouse IgG _{2a} , monoclonal 4B12 (anti-cytochrome oxidase subunit II (yeast))	F	NA	NA	NA
A6408	anti-OxPhos Complex IV subunit III (yeast), mouse IgG _{2a} , monoclonal DA5 (anti-cytochrome oxidase subunit III (yeast))	F	NA	NA	NA
A6432	anti-OxPhos Complex IV subunit IV (yeast), mouse IgG ₁ , monoclonal 1A12 (anti-cytochrome oxidase subunit IV (yeast))	F	NA	NA	NA
A21273	anti-Pep12p (yeast), mouse IgG ₁ , monoclonal 2C3 *0.5 mg/mL*	F	NA	NA	NA
A6457	anti-3-phosphoglycerate kinase (yeast), mouse IgG ₁ , monoclonal 22C5 (anti-PGK)	F	NA	NA	NA
A6449	anti-porin (yeast mitochondrial), mouse IgG ₁ , monoclonal 16G9	F	NA	NA	NA
A21274	anti-Vps10p (yeast), mouse IgG _{2a} , monoclonal 18C8 *0.5 mg/mL*	F	NA	NA	NA

F = Fixed cells only. NA = Not applicable.

Molecular Probes, Inc.

For US and Canada

Toll-Free: 1 800 438-2209

www.probes.com

Molecular Probes Europe BV

For Europe

Customer Service: +31 71 5236850

Technical Assistance: +31 71 5233431

www.invitrogen.com