

The Profession

Ophthalmic medical technology (OMT) involves assisting ophthalmologists in assessment and care of patients with eye disorders.

Certified Ophthalmic Medical Technologists (COMTs) have a thorough understanding of the human eye in terms of anatomy, physiology, optics, refractive errors and their correction, systemic and ocular diseases, pathologies, eye misalignments, neuro-ophthalmology, pediatric ophthalmology, genetic basis of ophthalmic conditions, low vision, and ocular pharmacology. COMTs are also prepared to perform detailed patient evaluations including many diagnostic tests, such as ultrasound, color vision, ocular pressures, visual fields, and eye-muscle tests. COMTs can also assist the surgeon in the operating room and with ophthalmic laser surgery. While working with patients and surgical assisting can be accomplished by those with other levels of certification, their advanced education and more comprehensive understanding of the human eye allows COMTs to help deliver more efficient health care to patients, thus benefiting both patients and ophthalmologists.

Job opportunities are likely to grow as the population ages and health care needs rise. There are many opportunities available for ophthalmic medical technologists in private clinics and academic departments of ophthalmology. Salary and benefits vary among different regions of the U.S. with experience. The average beginning salary range for ophthalmic medical technologist is \$31,000 to \$40,000.

The Program

The Ophthalmic Medical Technology program is divided into pre-professional and professional components and requires 124 semester credits (SC) to complete. Specified pre-professional course work normally requires about two years and may be completed at any regionally accredited college or university. The professional component of the program consists of two years of course work, with clinical experience beginning in the first semester.

This program receives significant support from the Harvey & Bernice Jones Eye Institute (JEI), the Central Arkansas Veterans Healthcare System, and Arkansas Children's Hospital (ACH). JEI provides lecture, laboratory and library facilities, and all provide clinical internship experiences for students. The program is housed academically in the Department of Ophthalmic Technologies in the College of Health Related Professions.



Pre-professional Curriculum

The pre-professional component includes the following 55 SC:

Area Typical Course Title	Minimum Semester Credits
Anatomy & Physiology	6
Microbiology	4
Biology electives	6
Physics	4
Chemistry	3
College Algebra or higher level Mathematics	3
English Composition	6
History of Civilization or World History	6
American History or National Government	3
Social Science*	6
Speech Communication	2
Fine Arts	3
Humanities	3
Total	55

* To include 3SC of general psychology.

Professional Curriculum

Students accepted into the professional component of the OMT program begin a full-time track in August that will require four regular semesters and two summer semesters to complete and will include 69 SC of upper-level courses. After completing all requirements students will be awarded a Bachelor of Science degree in Ophthalmic Medical Technology.

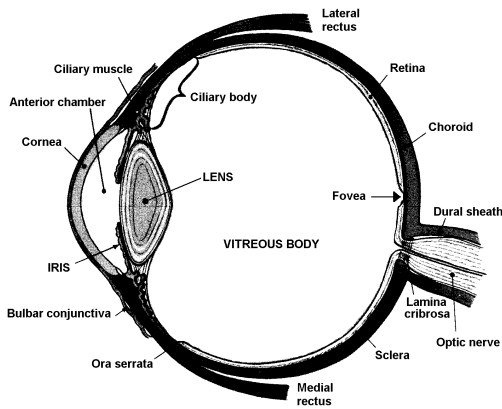
The following 69 semester credits (SC) are required in the professional component of the program:

Course #	Title	Semester Credits
Fall (1)		
OPH 3101	Clinical Skills Laboratory I	1
OPH 3201	General Medical Knowledge & Terminology	2
OPH 3202	Introduction to Ophthalmic Technology, Medical Law & Ethics	2
OPH 3203	Ocular Anatomy & Physiology	2
OPH 3204	Optics I	2
OPH 3510	Clinical Practicum I	5
		<u>14</u>
Spring (2)		
OPH 3105	Clinical Skills Laboratory II	1
OPH 3206	Optics II	2
OPH 3207	Contact Lenses/Opticianry	2
OPH 3208	Ophthalmic Pharmacology	2
OPH 3209	Ocular Motility I	2
OPH 3611	Clinical Practicum II	6
		<u>15</u>
Summer (3)		
OPH 3106	Clinical Skills Laboratory III	1
OPH 3412	Clinical Practicum III	4
		<u>5</u>
Fall (4)		
OPH 4101	Clinical Skills Laboratory IV	1
OPH 4201	Ocular Motility II: Abnormalities of Binocular Vision	2
OPH 4202	Survey of Eye Diseases	2
OPH 4204	Ophthalmic Photography & Angiography	2
OPH 4207	Advanced Concepts in Ophthalmology	2
OPH 4303	Special Testing	3
OPH 4510	Clinical Practicum IV	5
		<u>17</u>
Spring (5)		
OPH 4108	Cardio-pulmonary Resuscitation (CPR)	1
OPH 4205	Ocular Emergencies & Oculoplastics	2
OPH 4306	Special Topics	3
OPH 4309	Ophthalmic Surgical Assisting	3
OPH 4511	Clinical Practicum V	5
		<u>14</u>
Summer (6)		
OPH 4412	Clinical Practicum VI	4
		<u>4</u>
Total		69

Certification

The Joint Commission on Allied Health Personnel in Ophthalmology (JCAHPO) has defined the role for a Certified Ophthalmic Medical Technologist (COMT), as well as specifying standards for certification and recertification. Graduating from the Ophthalmic Medical Technology program will satisfy eligibility requirements for taking the COMT certifying examination administered by JCAHPO. This is a three-part test; applicants who pass the written examination (offered throughout the year) must also pass two performance (skill) tests.

Certification is valid for three years. Before it lapses, a COMT must apply for recertification by showing proof of 36 continuing education credits during the preceding three years.



Application Procedures & Deadlines

Each year the Department of Ophthalmic Technologies selects a limited number of students from the applications received for admission to the program. Application forms and information on non-refundable application fees may be obtained from the College of Health Related Professions (Office of Student Affairs) at (501) 686-5730. Completed applications along with a non-refundable application fee must be received by **May 15th**. A cumulative grade point average of at least 2.25 in the prerequisite courses is required to be considered for admission to the program. Official transcripts must be received from each institution attended by the applicant. Applicants must also demonstrate a general understanding of the profession, its responsibilities, and duties through observation and discussion with a practicing professional in the field. Qualified applicants will be invited for an interview.

Early consideration will be given to those who have submitted complete applications by **April 15th**.

Admission Requirements for International Applicants: All applicants who are not United States citizens or permanent resident aliens or for whom English is not their native language must meet additional admission requirements. Please consult the Admission/Academic Information section of the CHRP Catalog found at <http://www.uams.edu/chrp/catalog/>.

Arkansas residency will be considered during selection for admission. Applicants are considered without regard to race, color, creed, age, marital status, national origin, or sex. Qualified handicapped persons, capable of meeting academic standards essential to participation in the program, receive equal consideration.

Fees

Shown below are fees for 2011-2012. Fees are subject to change without notice by action of the Board of Trustees, so contact the department chairman prior to registration to learn the exact fees. Note that all fees are due upon registration.

Tuition for all students:

Arkansas resident	\$220.00 per semester credit
Non-resident	\$534.00 per semester credit

Other fees (laboratory, liability insurance premiums, health fee, etc.)

Student Health Fee (full-time)	\$79.90 per semester
Student Liability Insurance	\$13.00 per year
Student Clinic Fee*	\$60.00 per semester
Laboratory Fee**	\$340.00 one time only

*Most full-time students in Arkansas; additional information at (501) 686-5730.

**Spring semester of senior year only.

Additional fees may apply; contact the department chairman prior to registration for exact fees.

Applicants may request financial aid information, which includes grants, scholarships, and student loans, from the UAMS Student Financial Services Office-Awards Division, 4301 West Markham, #864, Little Rock, AR 72205. Please call (501) 686-5451 or visit www.uams.edu/studentfinancialservices for eligibility requirements.

Arkansas residency will be considered during selection for admission.

Applicants are considered without regard to race, color, gender, age, sexual orientation, religion, national origin or disability status as a criterion in deciding against any individual in matters of admission, placement, transfer, hiring, dismissal, compensation, fringe benefits, training, tuition assistance, and other personnel or educationally-related actions.

All documents should be submitted to:

**Department of Ophthalmic Technologies
College of Health Related Professions
University of Arkansas for Medical Sciences
4301 West Markham Street, Slot 619
Little Rock, AR 72205
Email: OMT@uams.edu**

This brochure describes the program requirements for the 2011-2012 academic year. While it is expected that most of the requirements will apply to 2012-2013 as well, some changes are likely. You are strongly advised to contact the department/program office to receive the latest information.

**Telephone: (501) 526-5880
or: (501) 686-5730
Fax: (501) 686-6855
www.uams.edu/chrp/omt**

Ophthalmic Medical Technology

**(501) 526-5880
(501) 686-5730**

www.uams.edu/chrp/omt/

UAMS

COLLEGE OF HEALTH RELATED PROFESSIONS

UNIVERSITY OF ARKANSAS
FOR MEDICAL SCIENCES

2011-2012

College of Health Related Professions
University of Arkansas for Medical Sciences
4301 West Markham Street, Slot 619
Little Rock, Arkansas 72205