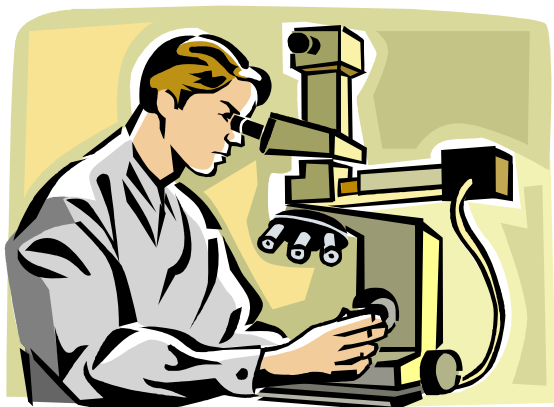


The Profession

With the use of a microscope, Cytotechnologists use morphologic (size and shape) criteria to decide whether a cell sample is normal, inflamed, premalignant, or malignant. Cytotechnologists may assist clinicians in obtaining cellular samples from various body sites. They then process these specimens, using a variety of techniques, in preparation for microscopic examination. The Cytotechnologists signs out negative specimens, while reviewing abnormal cases with a pathologist. At that time, a final diagnosis is reported to the clinician who is treating the patient. The well-trained Cytotechnologist is capable of distinguishing a variety of disease processes in arriving at a final diagnosis. In learning to do this, Cytotechnologists must be able to understand symptomatology and relate these manifestations to cellular responses to disease. Cytotechnologists are part of the team involved with the total care of the patient. As such, they may work as laboratory scientists, or they may become involved in administration, education or research. These kinds of opportunities may exist in hospitals, private laboratories, university centers, government facilities, or in industry. Recent starting salaries for Cytotechnologists were in the range of \$40,000 — \$46,000 per year.

The Program

The College of Health Related Professions' program in cytotechnology, jointly sponsored by the Department of Pathology of the College of Medicine, offers a Bachelor of Science degree. The professional portion of the curriculum encompasses 40 semester credits over 12 months of full-time study beginning in August. Contact the program director for further details.



Pre-professional Curriculum

Students, to be eligible for admission, must have completed 20 semester credits (SC) of biological sciences with a GPA of at least 2.5, 8 SC of chemistry, 3 SC of mathematics, 29 SC of specified general education course work, and 24 SC of elective course work before the professional phase of the program begins. Persons admitted into the professional portion of the cytotechnology program must have maintained a cumulative grade point average of at least 2.0 and completed at least the 84 semester credits listed above, with at least five (5) of them upper level (junior/senior). These credits may be completed at any regionally accredited college or university, but must fulfill all College requirements regarding acceptance of transfer credit. The 60 SC listed below must be included along with 24 SC of elective course work.

Area/Typical Course Title	Minimum Semester Credits
SCIENCE	
Biological Science	20
Cell Biology, General Biology, Histology, Bacteriology, Microbiology, Parasitology, Zoology, Anatomy & Physiology, Genetics	
Chemistry	8
Basic, two-semester, sequence of principles of chemistry with laboratories; courses must be at least the equivalent of the University of Arkansas at Little Rock's Fundamental Chemistry I (1400) and Fundamental Chemistry II (1401).	
Mathematics	3
College Algebra	
COMMUNICATIONS	2
Fundamentals of Speech or Speech Communication	
LIBERAL ARTS	15
English Composition 1 (3 SC)	
English Composition II (3 SC)	
History of Civilization or World History (6 SC)	
American History or National Government (3 SC)	
FINE ARTS	3
Art or Music or Theater Art	
HUMANITIES	3
Philosophy, Political Science, Literature, or Humanities	
SOCIAL SCIENCES	6
Psychology, Economics, Sociology, Philosophy	
Anthropology, Political Science, Geography, History (other than Liberal Arts requirements above)	
Total	60

Individuals that have already completed a baccalaureate or higher degree from an accredited college or university are eligible to apply if they have completed the following: a) 32 SC in residence, b) 20 SC of biological science, c) 8 SC chemistry, d) 3 SC college algebra or higher mathematics, e) 3 SC U.S. History/American National Government, and f) 3 SC of Humanities

Professional Curriculum

The following 40 Semester Credits are required in the professional program.

Course #	Title	SC
Fall (1)		
CYTO 4411	Introduction to Cytotechnology	4
CYTO 4412	Gynecological Cytopathology I	4
CYTO 4313	Gynecological Cytopathology II	3
CYTO 4614	Non-Gynecological Cytopathology I	6
		<u>17</u>
Spring (2)		
CYTO 4221	Laboratory Operations	2
CYTO 4225	Molecular Diagnostics	2
CYTO 4126	Molecular Diagnostics Laboratory	1
CYTO 4623	Non-Gynecological Cytopathology II	6
CYTO 4424	Cytology Internship I	4
		<u>15</u>
Summer (3)		
CYTO 4531	Cytology Internship II	5
CYTO 4331	Comprehensive Cytotechnology	3
		<u>8</u>
Total		40

Certification/Licensure

Graduation from the program establishes eligibility to apply to take the national certification examination in Cytotechnology given by the American Society of Clinical Pathologists Board of Certification and become registered as a Cytotechnologist (CT(ASCP)). Successful completion of the program does not itself ensure certification. Each student is responsible for familiarizing himself/herself with the applicable registration requirements.

Application Procedures and Deadlines

Class size is limited, and not all applicants are selected for participation in the program. Applications must be received by May 15 to be assured of consideration for admission. Applicants must provide:

1. **Application for Admission:** CHRP Application for Admission Form is required.

2. **Admission Fee:** A non-refundable application fee of \$20.00 is required and must accompany the application. If applying to multiple programs, a \$20.00 fee is required for the first program and \$10.00 for each additional program.
3. **Official Transcripts:** Arrange for each college or university you have attended to forward an official transcript of your course work directly to the CHRP Admissions Officer. A GPA of at least 2.50 is required in the biological science courses for admission.
4. **Interview:** Qualified applicants are contacted to arrange an interview after receipt of application and all transcripts.
5. **Admission Requirements for International Applicants:** All applicants who are not United States citizens or permanent resident aliens or for whom English is not their native language must meet additional admission requirements. Please consult the Admission/Academic Information section of the CHRP Catalog found at <http://www.uams.edu/chrp/catalog/>.

Fees

Shown below are fees for 2011-2012. Fees are subject to change without notice by action of the Board of Trustees, so contact the program director prior to registration to learn the exact fees. Note that all fees are due upon registration.

Arkansas resident	\$220.00 per semester credit
Non-resident	\$534.00 per semester credit

Other fees (laboratory, microscope rental, graduation, health fee, etc.) as estimated per year.

Application Fee	\$20.00
Student Health Fee	\$159.80
Liability Insurance Fee	\$13.00
Microscope Rental	\$121.50
Laboratory Fee	\$165.00
Technology Fee	\$92.60
Graduation Fee	\$75.00
Student Clinic Fee*	\$120.00

*Most full-time students in Arkansas; additional information at (501) 686-5730.

Additional fees may apply; contact the program director prior to registration for exact fees.

Applicants may request financial aid information, which includes grants, scholarships, and student loans, from the UAMS Student Financial Services Office-Awards Division, 4301 West Markham, #864, Little Rock, AR 72205. Please call (501) 686-5451 or visit www.uams.edu/studentfinancialservices for eligibility requirements.

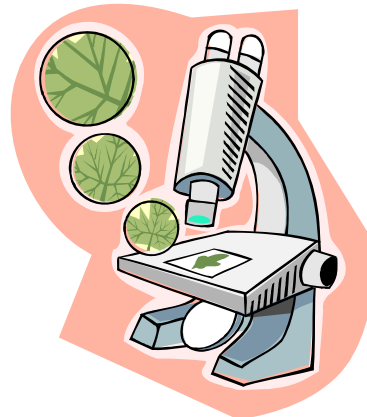
Arkansas residency will be considered during selection for admission.

Applicants are considered without regard to race, color, gender, age, sexual orientation, religion, national origin or disability status as a criterion in deciding against any individual in matters of admission, placement, transfer, hiring, dismissal, compensation, fringe benefits, training, tuition assistance, and other personnel or educationally-related actions.

This brochure describes the program requirements for the 2011-2012 academic year. While it is expected that most of the requirements will apply to 2012-2013 as well, some changes are likely. You are strongly advised to contact the department/program office to receive the latest information.

Telephone (501) 686-5776
www.uams.edu/chrp/cytotechnology

Cytotechnology Program
 Department of Laboratory Sciences
 College of Health Related Professions
 University of Arkansas for Medical Sciences
 4301 W. Markham Street, #597-1
 Little Rock, Arkansas 72205



Cytotechnology

(501) 686-5776

www.uams.edu/chrp/cytotechnology/

UAMS
 COLLEGE OF
 HEALTH RELATED
 PROFESSIONS
 UNIVERSITY OF ARKANSAS
 FOR MEDICAL SCIENCES

2011-2012

College of Health Related Professions
 University of Arkansas for Medical Sciences
 4301 West Markham Street, #597-1
 Little Rock, Arkansas 72205